



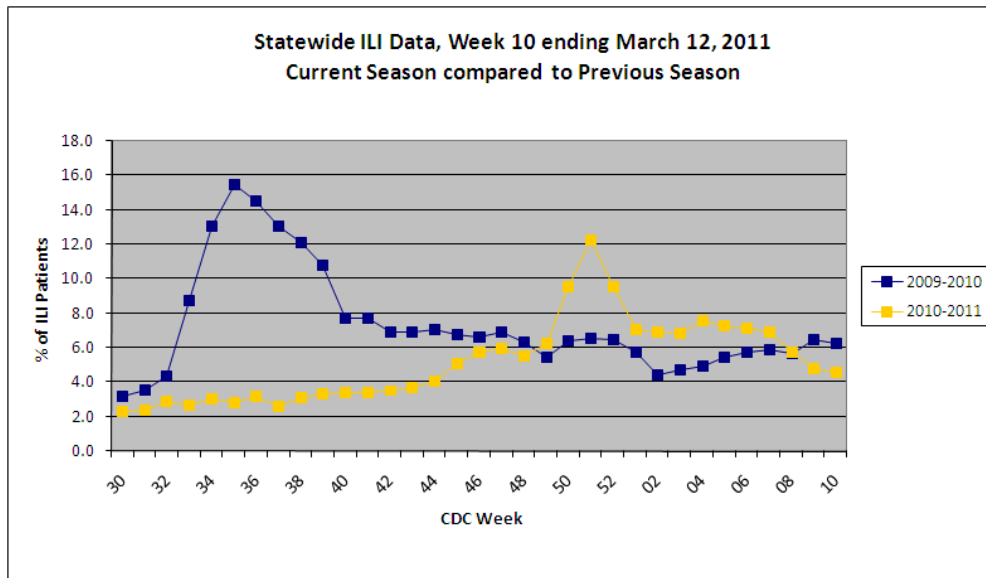
2010-2011 Influenza Report Week 10

March 6 – March 12, 2011

About our flu activity reporting

MSDH relies upon selected sentinel health practitioners across the state to report the percentage of non-trauma visits consistent with an influenza-like illness (ILI; fever > 100°F AND cough and/or sore throat). Also, providers are supplied with specimen collection kits: Samples are submitted to the Mississippi Public Health Laboratory for influenza PCR testing. Reports are used to estimate the state’s ILI rate and the magnitude of the state’s influenza activity. Reports represent only the distribution of flu in the state, not an actual count of all flu cases statewide. **Information is provisional only and may change depending on additional reporting from sentinel providers.**

State ILI Surveillance



For week 10 (03/06/2011-03/12/2011), the overall state ILI rate (4.5%) was comparable to last week (4.8%), but lower than this time last year (6.3%). |

Figure 1

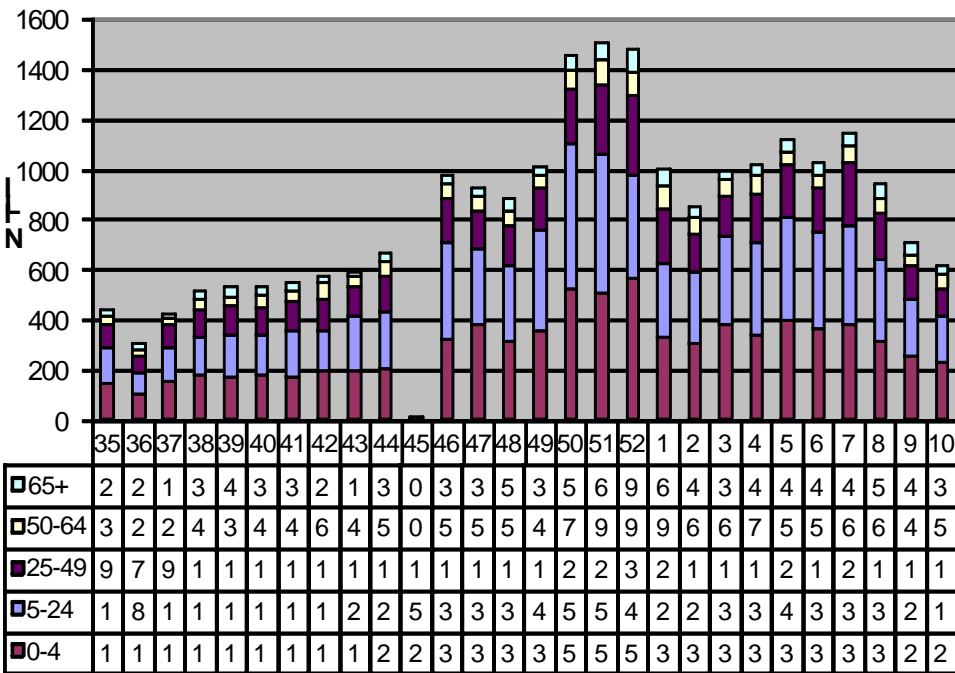
Total number of non-trauma patients treated by sentinel providers in the last three weeks. | **Table 1**

| 2010-2011 Influenza Season | | | | |
|----------------------------|-----------------|---------------------|--------------|--------------|
| CDC Week | Week Ending | Non-trauma patients | ILI symptoms | ILI Rate (%) |
| 10 | March 12 | 13577 | 615 | 4.5 |
| 9 | March 5 | 15077 | 722 | 4.8 |
| 8 | February 26 | 17087 | 983 | 5.8 |

During week **10**, **one** district (2) had an increase in ILI activity; **three** districts (3, 7, 8, and 9) had a decrease. **Four** districts remained about the same (1, 4, 5, and 6). *Information is provisional only and may change depending on additional reporting from sentinel providers.* / **Table 2**

| MSDH District ILI Rates (%) 2010-2011 | | |
|--|--------|---------|
| District | Week 9 | Week 10 |
| State | 4.8 | 4.5 |
| 1 | 4.9 | 5.2 |
| 2 | 15.5 | 17.9 |
| 3 | 4.1 | 3.6 |
| 4 | 4.3 | 4.2 |
| 5 | 1.5 | 1.3 |
| 6 | 6.7 | 6.3 |
| 7 | 3.4 | 2.4 |
| 8 | 7.4 | 6.6 |
| 9 | 4.2 | 3.4 |

2010-2011 Statewide ILI Cases by Age Group

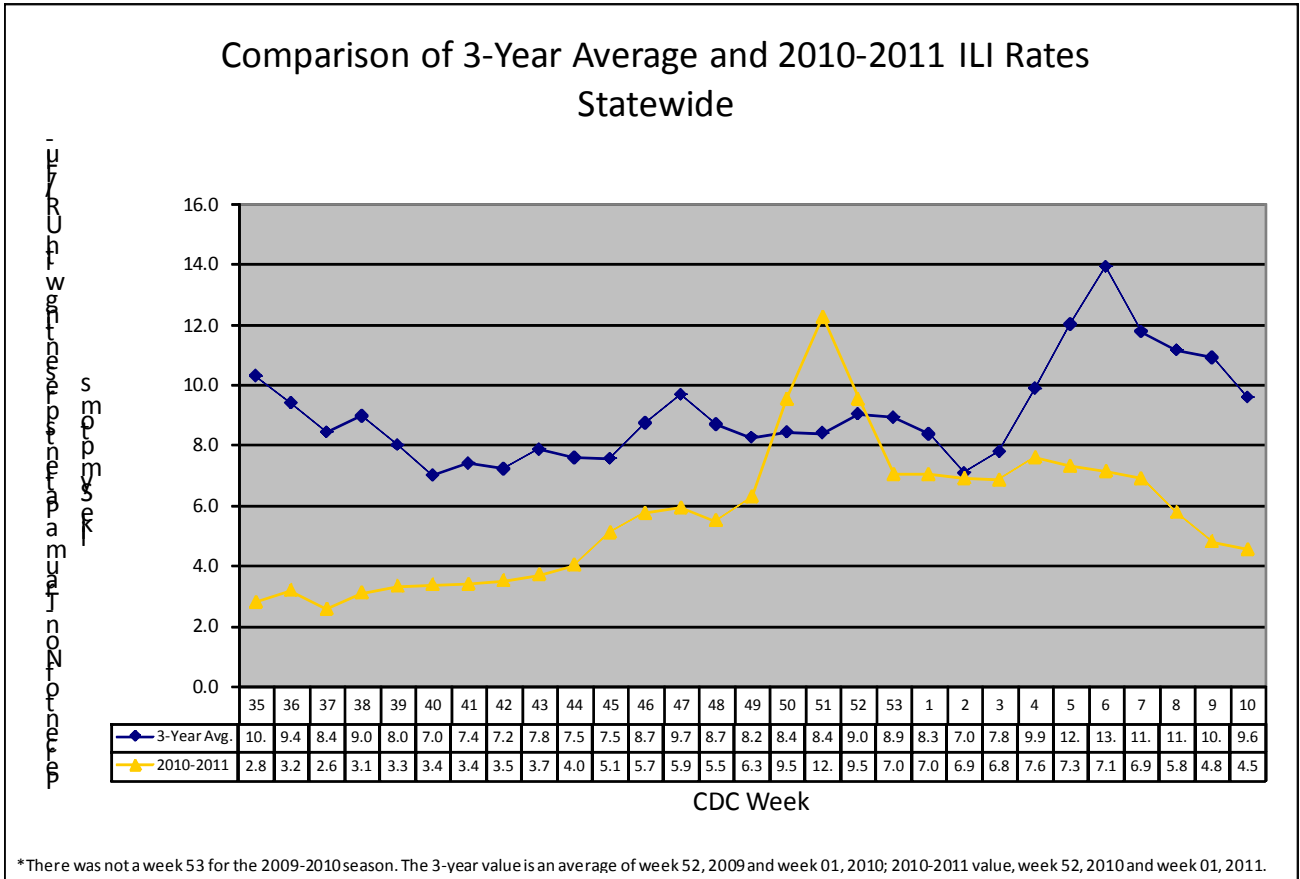


The number of reported ILI cases has been highest among people in the 0 to 4 years of age group, followed by those in the 5 to 24 years of age group. During Week 10, the number of reported ILI cases was highest among individuals in the **0 years to 4 years** of age group. | **Figure 2**

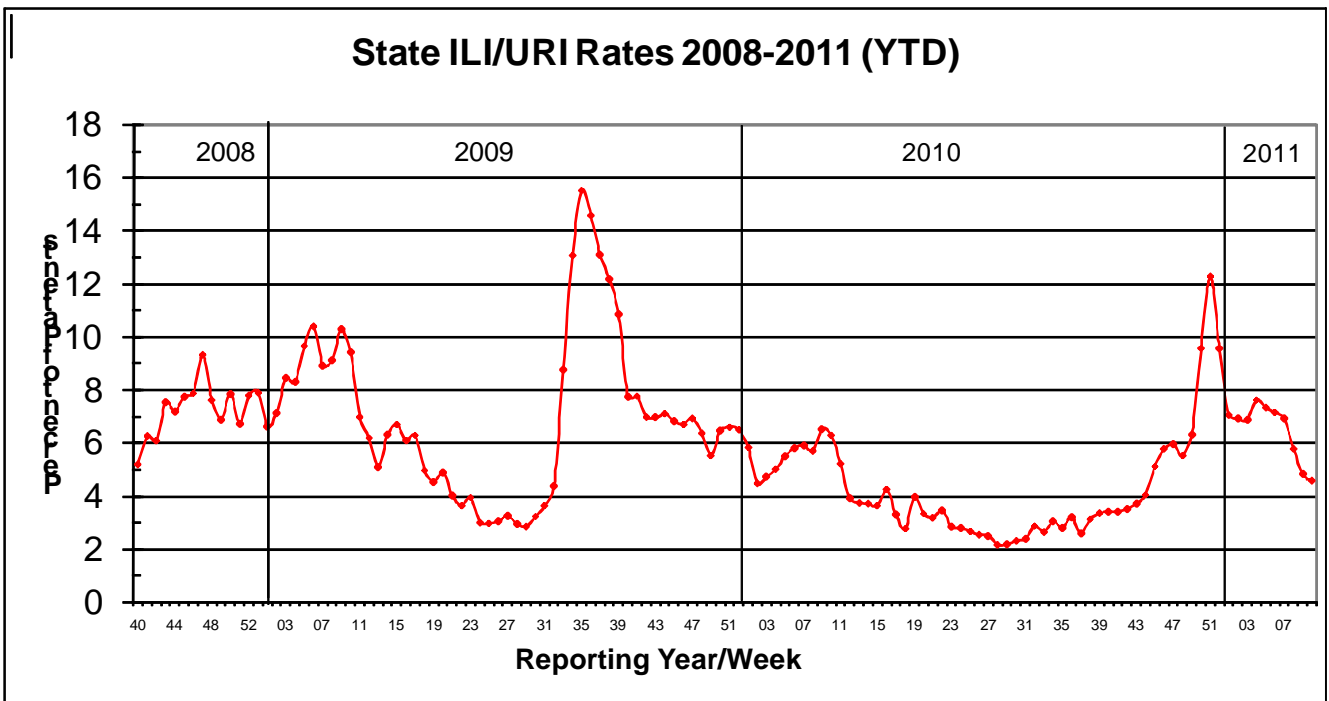
*Insufficient data due to error in reporting system

CDC Week

The 2010-11 state ILI rate was **below** baseline for week 10. Until Week 50, the state ILI rate had been below baseline for the past six months. | **Figure 3**

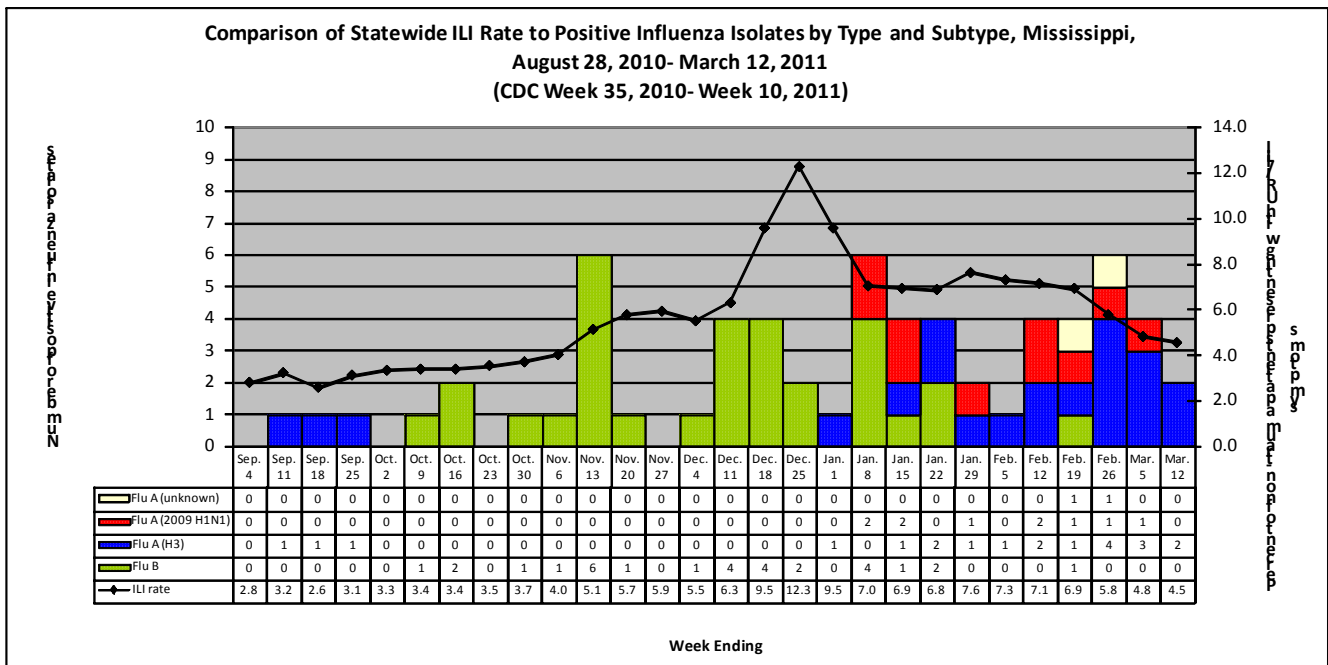


Mississippi ILI Rates 2008-2011 | **Figure 4**



Flu testing Reports

Since September, there have been **sixty-four** respiratory samples that were positive by influenza PCR testing. **Twenty-one** were positive for influenza A (H3N2), one of which had a documented travel history to Florida prior to the onset of symptoms and represented an imported case. **Ten** were positive for influenza A (2009 H1N1), one of which had a documented travel to Georgia prior to the onset of symptoms. **Thirty-one** confirmed cases were Flu B. **Two** were positive for influenza A but were not sub- typed. Influenza cases were identified from the following counties: Adams, Attala, Carroll, Chickasaw, Clay, Hinds, Holmes, Jasper, Forrest, Grenada, Lamar, Lauderdale, Lawrence, Leake, Lincoln, Marion, Marshall, Monroe, Oktibbeha, Panola, Pike, Perry, Stone, Tate, and Yazoo. | **Figure 5**



Since September, there have been **six** laboratory confirmed, influenza-related hospitalizations reported in Mississippi. **Four** cases were positive for influenza A (H3N2). **One** was positive for flu B. The remaining **one** case was positive for influenza A (2009 H1N1). To date, there have been no reported influenza-related deaths. | **Table 3**

2010-2011 Laboratory-Confirmed Influenza Hospitalizations and Deaths

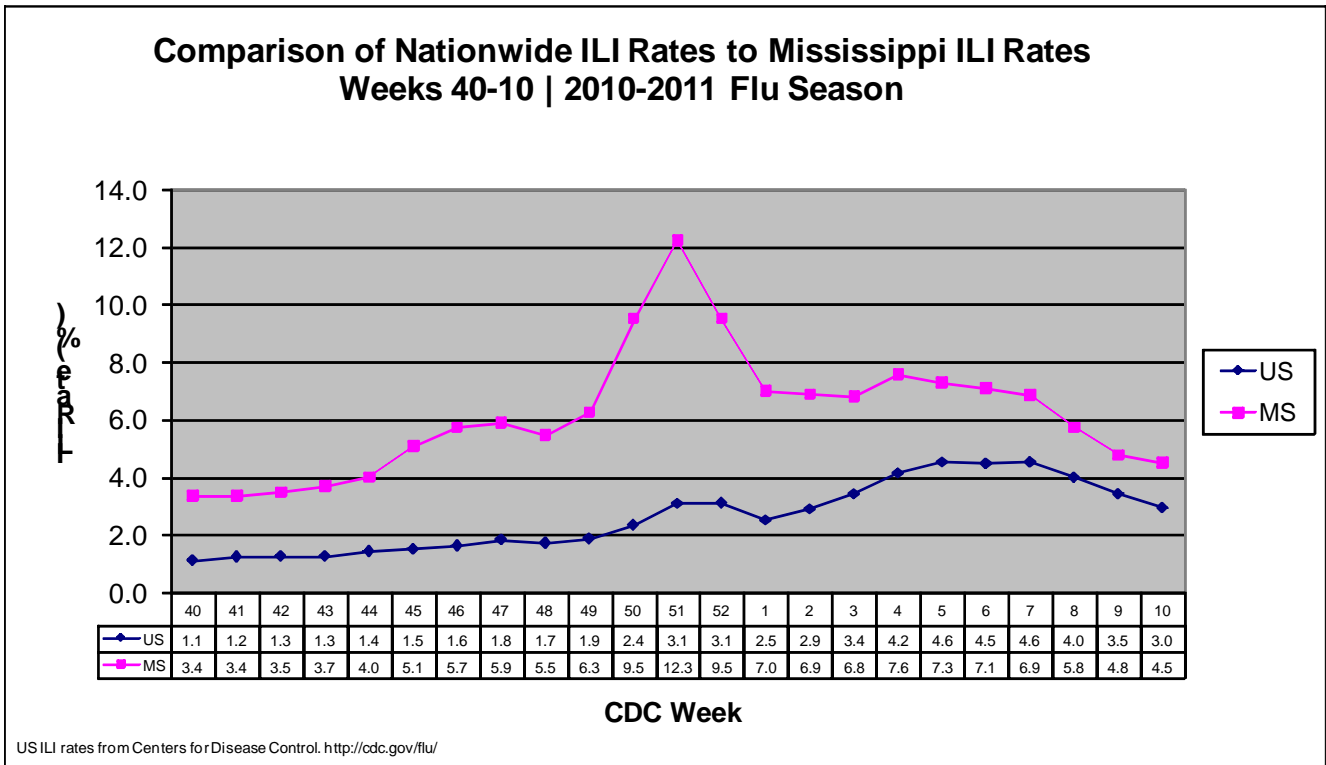
| Age Group | A | A | A | B | Deaths |
|---------------|-------------|--------|-----------|---|--------|
| | (2009 H1N1) | (H3N2) | (unknown) | | |
| 0-4 | 0 | 0 | 0 | 0 | 0 |
| 5-24 | 0 | 0 | 0 | 0 | 0 |
| 25-49 | 0 | 2 | 0 | 0 | 0 |
| 50-64 | 0 | 1 | 0 | 1 | 0 |
| >65 | 1 | 1 | 0 | 0 | 0 |

National ILI Surveillance

Mississippi reported “Local” activity for week 10. | Table 2

| Level of Flu Activity | Definition |
|-----------------------|--|
| No Activity | Overall clinical activity remains low and there are no lab confirmed cases. |
| Sporadic | Isolated cases of lab confirmed influenza in the state; ILI activity is not increased <u>OR</u> A lab-confirmed outbreak in a single institution in the state; ILI activity is not increased. |
| Local | Increased ILI within a single region AND recent (within the past 3 weeks) laboratory evidence of influenza in that region. ILI activity in other regions is not increased <u>OR</u> two of more institutional outbreaks (ILI or lab confirmed) within a single region AND recent (within the past 3 weeks) lab confirmed influenza in that region. Other regions do not have increased ILI and virus activity is no greater than sporadic in those regions |
| Regional | Increased ILI in at least 2 regions but fewer than half of the regions AND recent (within the past 3 weeks) lab confirmed influenza in the affected regions <u>OR</u> Institutional outbreaks (ILI or lab confirmed) in at least 2 regions but fewer than half of the regions AND recent lab confirmed influenza in the affected regions. |
| Widespread | Increased ILI and/or institutional outbreaks (ILI or lab confirmed) in at least half of the regions AND recent (within the past 3 weeks) lab confirmed influenza in the state. |

Nationwide ILI rates (reported by Centers for Disease Control) vs. Mississippi ILI rates | Figure 6



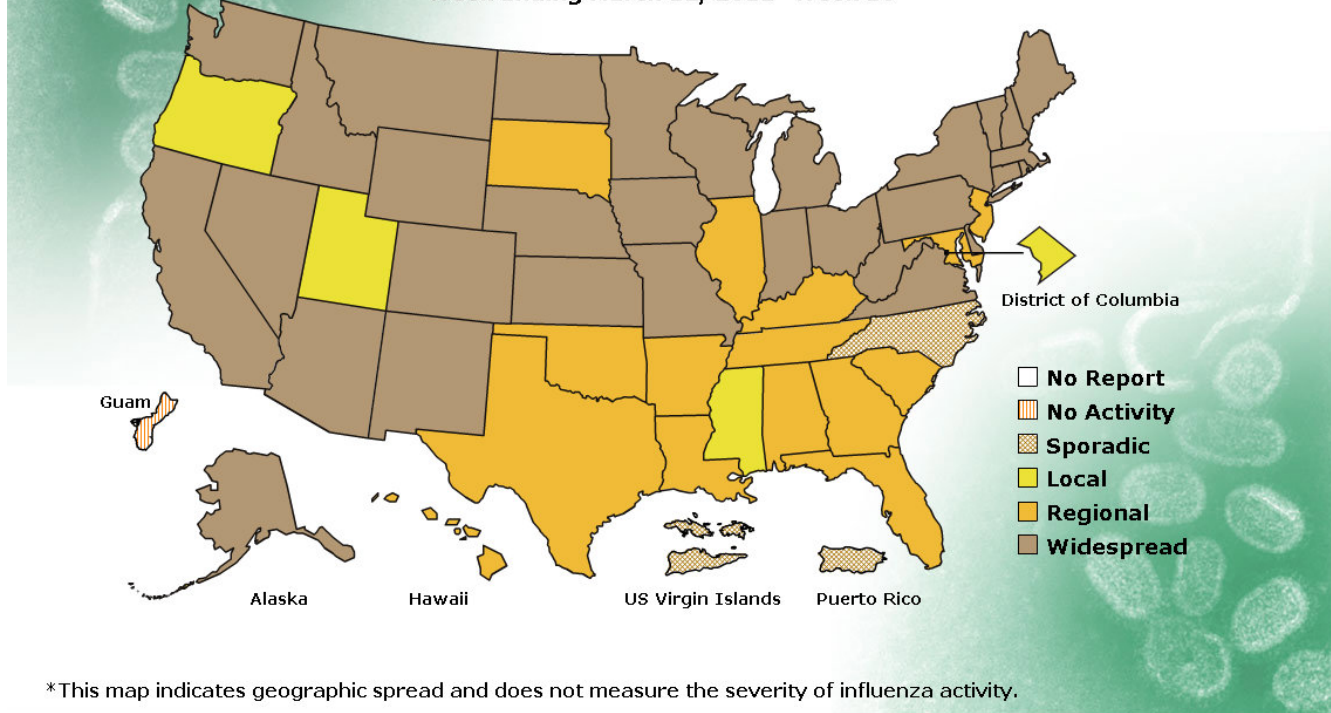
During week **10**, influenza activity in the United States decreased¹ | **Figure 7**

FLUVIEW



**A Weekly Influenza Surveillance Report Prepared by the Influenza Division
Weekly Influenza Activity Estimates Reported by State and Territorial Epidemiologists***

Week Ending March 12, 2011- Week 10



*This map indicates geographic spread and does not measure the severity of influenza activity.

¹For up-to-date information on flu activity nationwide, please refer to the CDC’s website:
<http://www.cdc.gov/flu/weekly/fluactivity.htm>

Additional information:

| | |
|--|---|
| Centers for Disease Control and Prevention | http://cdc.gov/flu/ |
| Flu.gov | http://www.flu.gov/ |
| MSDH Flu and Pneumonia | http://msdh.ms.gov/msdhsite/ static/14,0,199.html |
| Google Flu Trends | http://www.google.org/flutrends/ |
| World Health Organization FluNet | http://www.who.int/csr/disease/influenza/influenznetwork/flunet/en/ |

Page intentionally blank

Appendix

Figure 1

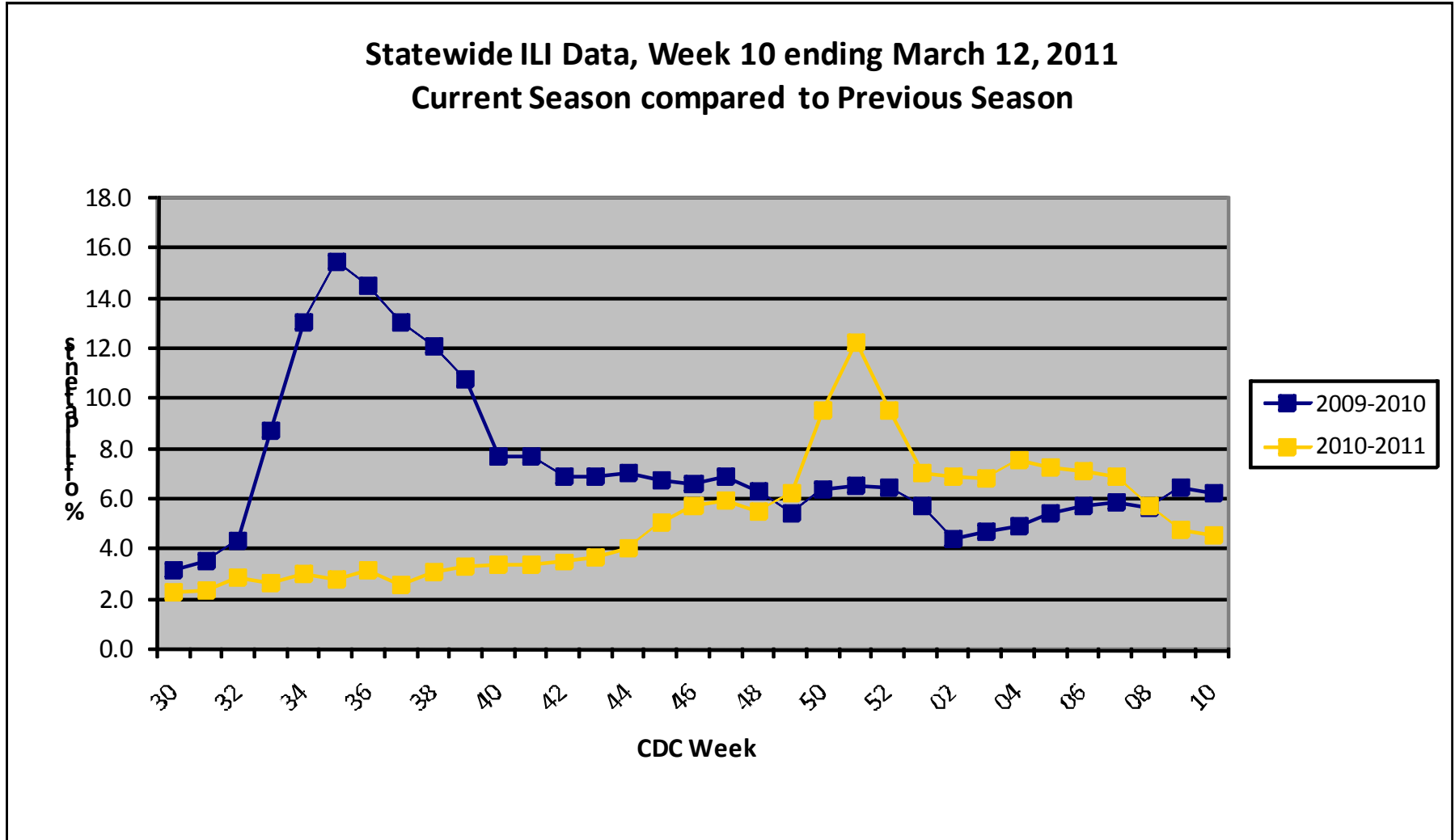
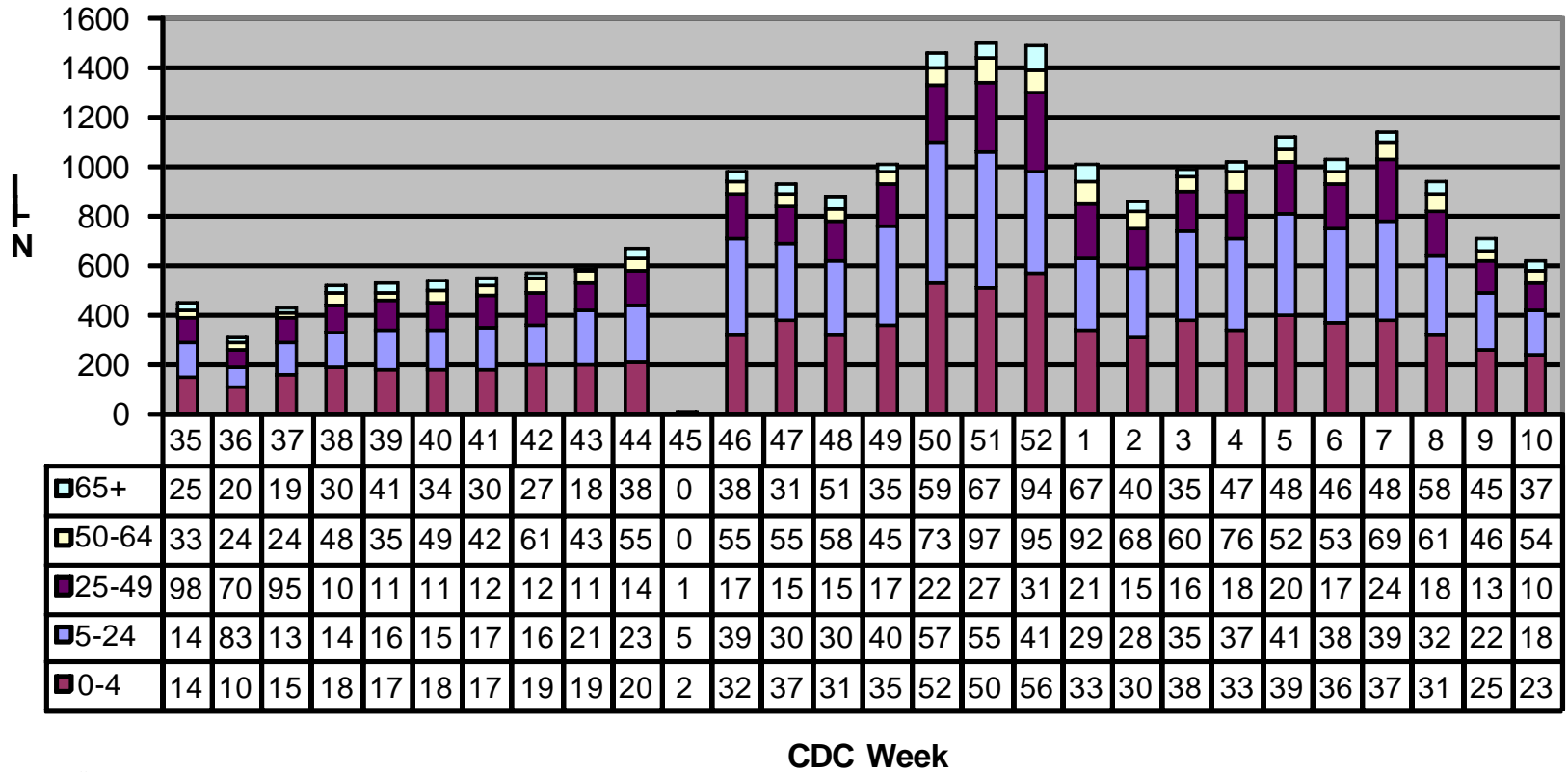


Figure 2

2010-2011 Statewide ILI Cases by Age Group

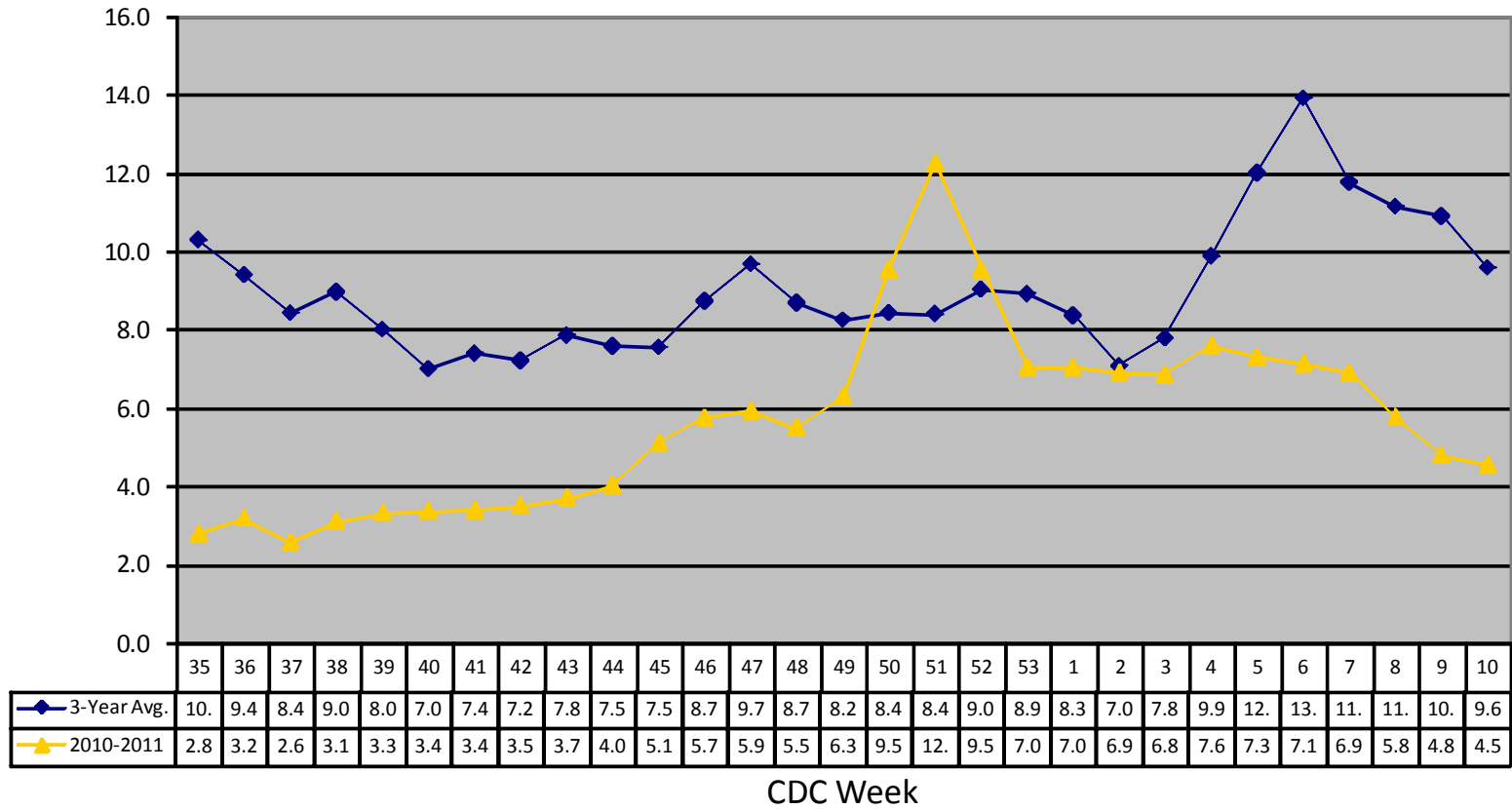


*Insufficient data due to error in reporting system

Figure 3

Comparison of 3-Year Average and 2010-2011 ILI Rates Statewide

Percentage of Outpatient Visits with Influenza-Like Illness



*There was not a week 53 for the 2009-2010 season. The 3-year value is an average of week 52, 2009 and week 01, 2010; 2010-2011 value, week 52, 2010 and week 01, 2011.

Figure 4

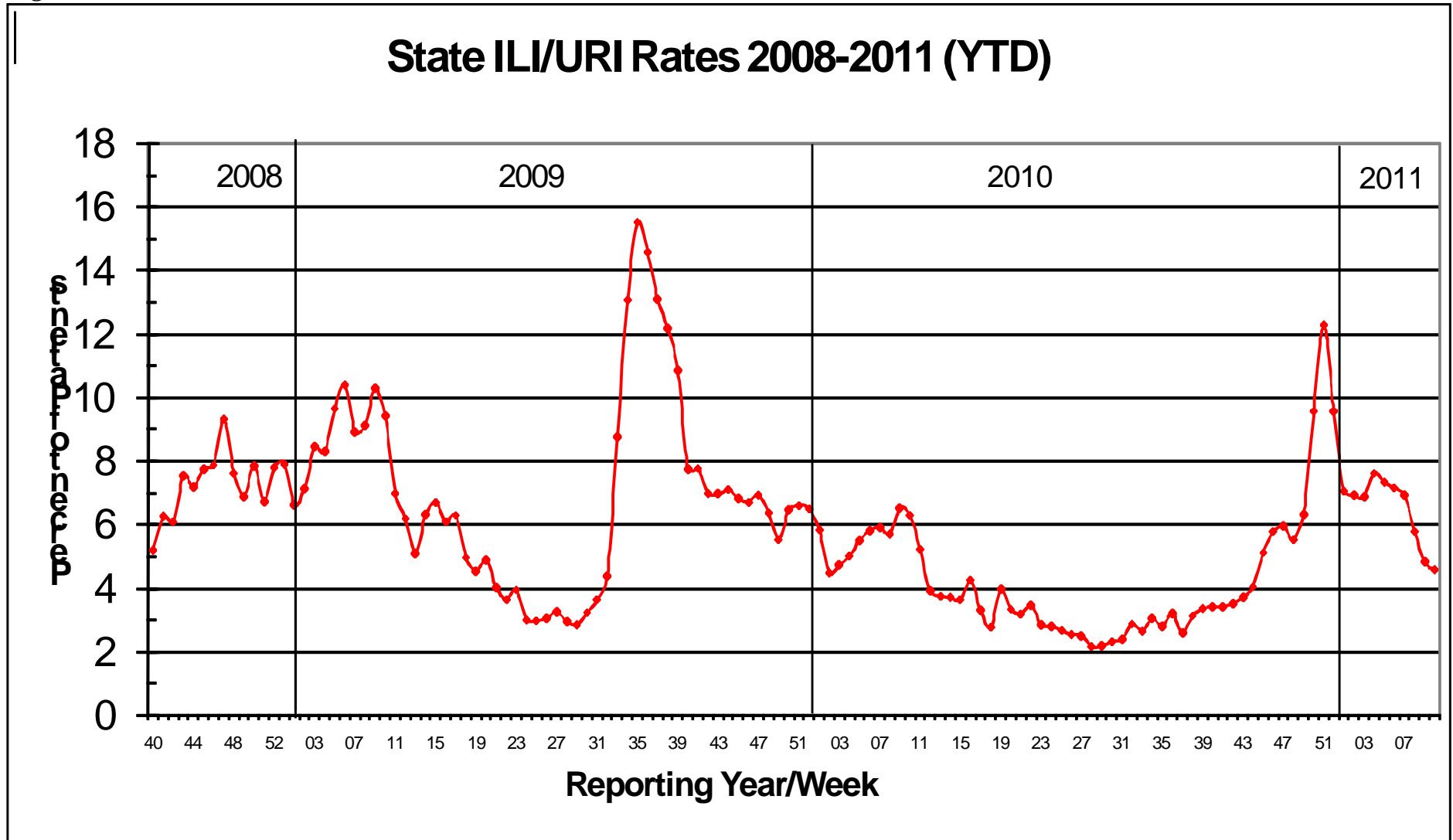


Figure 5

Comparison of Statewide ILI Rate to Positive Influenza Isolates by Type and Subtype, Mississippi, August 28, 2010- March 12, 2011 (CDC Week 35, 2010- Week 10, 2011)

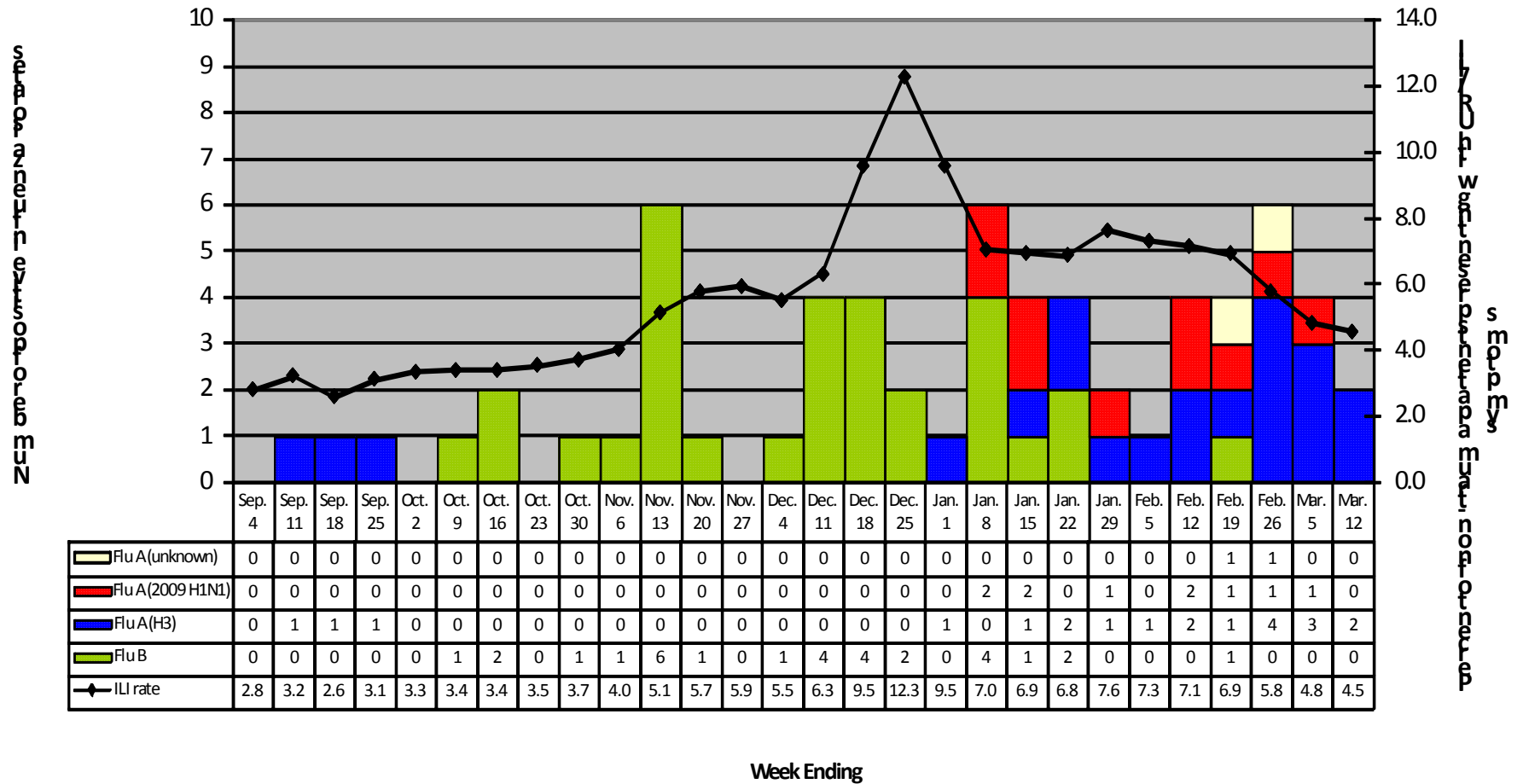
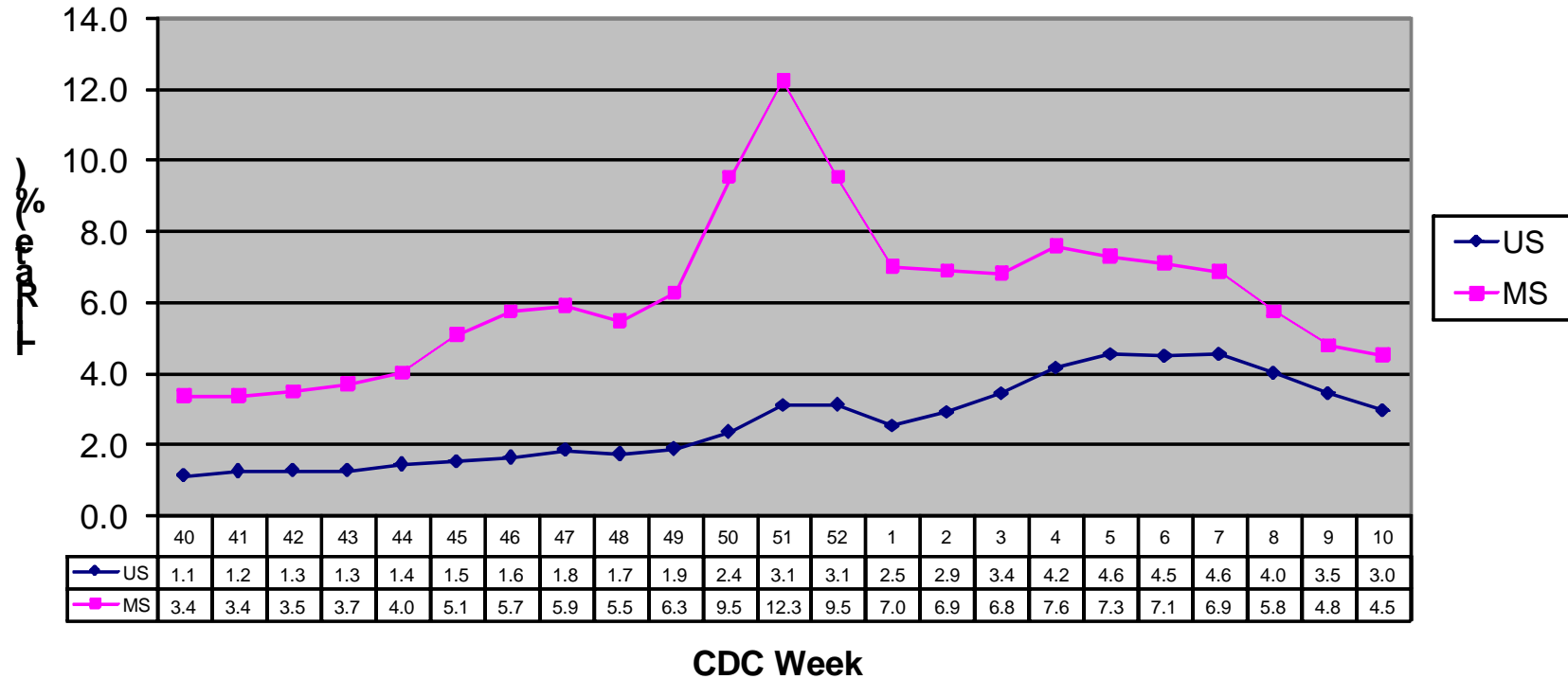


Figure 6

Comparison of Nationwide ILI Rates to Mississippi ILI Rates Weeks 40-10 | 2010-2011 Flu Season



US ILI rates from Centers for Disease Control. <http://cdc.gov/flu/>

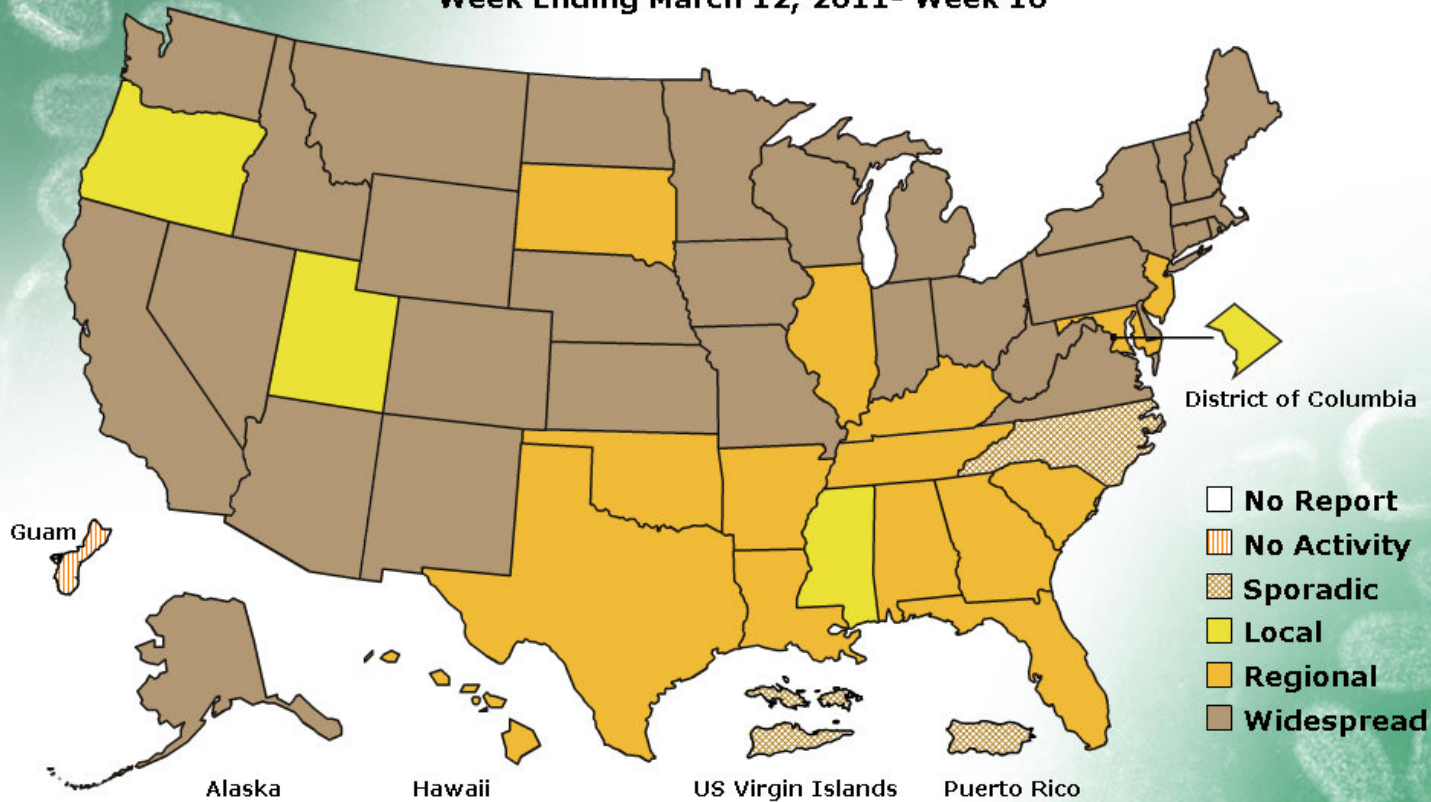
Figure 7

FLUVIEW



**A Weekly Influenza Surveillance Report Prepared by the Influenza Division
Weekly Influenza Activity Estimates Reported by State and Territorial Epidemiologists***

Week Ending March 12, 2011- Week 10



*This map indicates geographic spread and does not measure the severity of influenza activity.