

**Mississippi Emergency Medical Services
Annual Report
2018**

Chapter 1: Emergency Medical Services Operating Fund (EMSOF)

The Mississippi Emergency Medical Services Operating Fund (EMSOF) was established in 1982 through legislation. These funds are distributed per capita to eligible governmental units (cities, counties, EMS districts) for local level EMS support. BEMS has administered the EMSOF since its establishment.

BEMS makes disbursements annually upon request from each governmental unit. According to law, these distributions must be used *in addition* to existing annual emergency medical services budgets of the governmental units.

Appropriations from the Legislature in fiscal year 2018 totaled \$1,800,000 and disbursements of \$1,628,161 were distributed to two eligible EMS districts, nine eligible municipalities and 62 eligible counties.

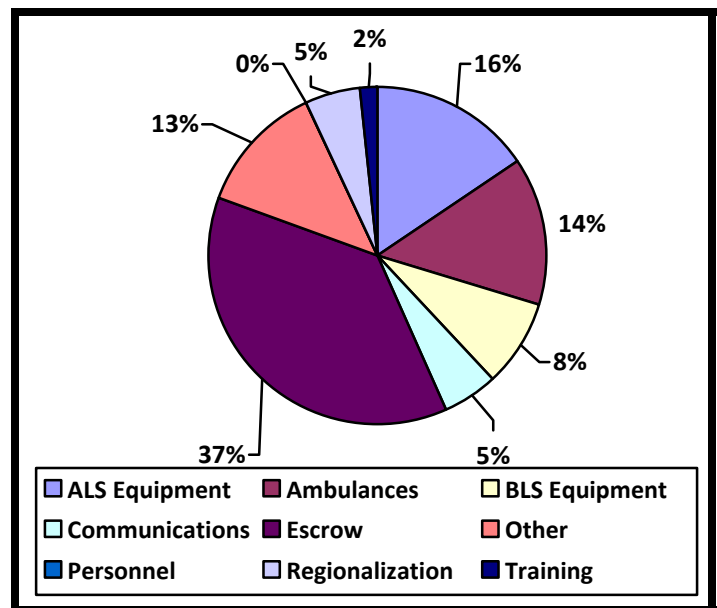
EMSOF Disbursements

The criteria used for determining priority for local expenditures follow:

- Basic Life Support** – To increase the availability and/or improve the quality of basic EMS Agency as described in Sections 41-59-1 through 41-59-49 of the Mississippi Code of 1972 as amended.

- Advanced Life Support** – To increase the availability and/or improve the quality of advanced life support services as defined in Sections 41-60-11 through 49-60-13 of the Mississippi Code of 1972 as amended.
- Regionalization** – To support or increase support for the establishment, administration, and/or expansion of EMS districts as defined in Sections 41-59-51 through 41-59-59 of the Mississippi Code of 1972 as amended.

The total collections since 1983 are \$53,275,923; disbursements since 1984 are \$47,542,696. In 2018, use of the EMSOF disbursements is categorized below.



Chapter 2: Emergency Medical Services Personnel

Personnel certified by the Credentialing Branch of BEMS provide emergency medical care in Mississippi. BEMS is responsible for ensuring that quality emergency medical care is provided through coordination of training for all levels of personnel including Critical Care Paramedic, Paramedic, Emergency Medical Technician (EMT), Emergency Medical First Responder (MFR) and EMS-Driver (EMS-D) certification.

Branch staff also oversees the testing of all Paramedic and EMT candidates and certify those who meet the required educational standards. BEMS uses the National Registry of Emergency Medical Technicians' (NREMT) examination system. Paramedics and EMTs in Mississippi must perform National Registry practical skills and pass a written examination to be certified. Mississippi adheres to the two national standard levels of training for the EMT:

- EMT
- Paramedic

Numbers of certified personnel at each level in each county are listed in the county summaries.

Emergency Medical Technician

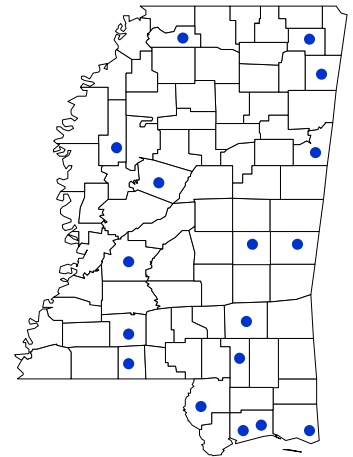
EMT is the first level of training in the Emergency Medical Technician career structure. The course covers all techniques of basic life support and provides a solid foundation for care of injured or ill patients in the pre-hospital setting. The minimum classroom time for the EMT course is 120 clock hours of didactic and laboratory instruction and 45 clock hours of field and clinical.

With the cooperation of the Governor's Highway Safety Program, the Mississippi State Department of Health, the American College of Surgeons-Mississippi Committee on Trauma, and the Mississippi Chapter of the American College

of Emergency Physicians, the Mississippi Vocational-Technical Education Division of the Department of Education offers the EMT training course through the Mississippi Community College system. Also, approved Advanced Life Support Training programs are authorized to provide EMT training. In addition to the national training standards, state guidelines assure standardization among all in-state EMT courses.

The map below indicates the location of educational instruction facilities for the EMT program.

1. Coahoma Community College
2. Co-Lin Community College
3. East Central Community College
4. East Mississippi Community College
5. Gulf Coast Emergency Medical Services District
6. Hinds Community College
7. Holmes Community College
8. Itawamba Community College
9. Jackson County EMS District
10. Jones County Junior College
11. Meridian Community College
12. Mississippi Delta Community College
13. Mississippi Gulf Coast Community College
14. Northeast Community College
15. Northwest Community College
16. Pearl River Community College
17. Southeast Trauma Care Region
18. Southwest Community College



Most Mississippi community colleges offer EMT courses within their college district boundaries via satellite campuses.

In FY'18, 36 separate courses were provided through the community college system in Mississippi, resulting in 378 individuals

completing the course. Upon completion of an approved EMT course and verification of competence in each of the required practical skill areas, students may apply to take the National Registry examination. In FY'18, of the tests administered, there were a total of 474 attempts with 288 passing scores of 70 percent or greater - a pass rate of 61 percent.

Numbers of certified personnel at each level in each county are listed in the county summaries.

Paramedics

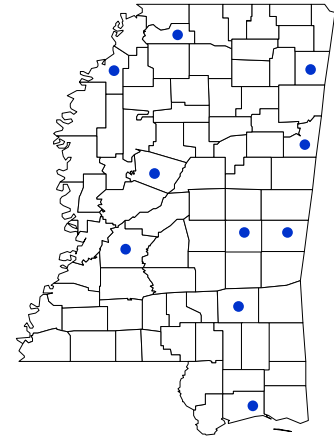
Paramedics provide the highest level of pre-hospital care. Paramedics are trained to perform advanced cardiac resuscitation, medication, and advanced IV therapy for medical and trauma emergencies along with advanced airway management. The minimum hours for Paramedic training are 795 didactic and laboratory clock hours and 675 clinical and field.

Mississippi's ten Advanced Life Support (ALS) educational programs teach the Paramedic level. The U.S. Department of Transportation curriculum serves as the standard for advanced training. Mississippi requires ALS training programs to be accredited by the Joint Review Committee on Educational Programs for the

Commission on Accreditation of Allied Health Educational Programs (CAAHEP).

The map illustrates the in-state distribution of ALS educational programs. All of the programs are accredited by the Commission on Accreditation of Allied Health Educational Programs (CAAHEP).

- Coahoma Community College
- East Central Community College
- East Mississippi Community College
- Hinds Community College
- Holmes Community College
- Itawamba Community College
- Jones County Junior College
- Meridian Community College
- Mississippi Gulf Coast Community College
- North West Mississippi Community College



For the Paramedic in FY'18, of the 122 tests administered, there were 94 passing scores of 70 percent or greater - a pass rate of 77 percent.

(Numbers of certified personnel at each level in each county are listed in the county summaries.)

Emergency Medical Services – Driver (EMS Vehicle Operator)

Mississippi requires drivers of ambulance vehicles to be EMS-Driver certified. Driver programs must adhere to the U.S. Department of Transportation Training Program in Operation of Emergency Vehicles. A number of other driver programs meeting this standard have been approved by BEMS. Approved programs in Mississippi include:

- Allsafe
- Emergency Vehicles Operators Course
- EMS Vehicle Operator Safety (EVOS)
- National Academy of Professional Driving
- National Institute of Fire & EMS
- National Safety Council (Coaching the Emergency Vehicle Operator)
- U.S. Fire Administration (Emergency Vehicle Driving Training)
- Volunteer Fire Insurance Service

Paramedic (JRCEMT-P), a branch of the

Chapter 3: Emergency Medical Services Agencies

Compliance with Mississippi EMS Law, Rules and Regulations

The compliance branch assures compliance with the state EMS Law, Rules, Regulations. This includes the licensing of EMS Agencies and inspection of vehicles.

The compliance branch licenses EMS Agencies by their level of care. The levels include:

- Invalid Transfer
- Basic Life Support (BLS)
- Advanced Life Support-Paramedic (ALS-Paramedic)

The Invalid Transfer level offers:

- At minimum an EMS Driver
- Transportation of non-emergency patients

The Basic Life Support (BLS) level offers:

- At minimum an EMS Driver and one EMT
- Transportation of emergency and non-emergency patients in pre-hospital and/or interfacility situations

The Advanced Life Support-Paramedic (Paramedic) level offers:

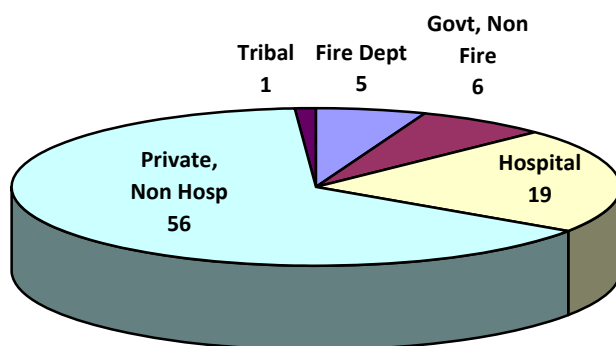
- At minimum an EMS Driver and one Paramedic
- Transportation of emergency and non-emergency patients in pre-hospital and/or interfacility situations advanced airway management, cardiac monitoring, drug therapy and/or advanced Techniques.

EMS Agency Licensure

The compliance branch of the Bureau, under statutory authority of the Mississippi Annotated Code, licenses EMS Agencies by location and issues permits for each vehicle operated. Licenses are issued for ground or Air Medical

EMS Agencies. The graph illustrates the number of licensed EMS Agencies for fiscal year 2018. In Mississippi, corporate EMS Agency ownership exceeds the number of hospital and government owned EMS Agencies. This trend is similar to the national trend towards privatization.

EMS Agency by Ownership Type



Every ambulance vehicle permitted in the State of Mississippi is inspected an average of two times annually to ensure compliance with EMS Law, Rules, and Regulations. The total number of ambulances permitted for the fiscal year 2018 is 886.

Included in this number are invalid vehicles, ground ambulances, air ambulances, intensive care and special use vehicles.

Ground EMS Agencies

Five types of ground ambulance vehicles transport patients in Mississippi:

- Type 1 ambulances are cab and chassis ambulances with separation between the cab and patient care box
- Type 2 ambulances are van type ambulances
- Type 3 ambulances are cab and chassis ambulances without partition between the cab and chassis

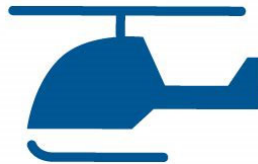
- Invalid vehicles are stretcher vans that may be Type 1, 2, or 3.
- Special-use vehicles are supervisory or sprint cars permitted for emergency operation in connection with emergency medical service calls.

Included in these types of ambulances are intensive care units which provide specialized services such as neonatal and cardiac transfers.

Air Medical EMS Agencies Licensed in Mississippi

There are 30 licensed providers that offered Air Medical EMS Agencies in Mississippi during FY'18:

- | | |
|--|--|
| • Air Evac 106 Demopolis, AL | • Air Med International |
| • Air Evac EMS, DBA Air Evac Lifeteam - Rayville | • Angel One Transport |
| • Air Evac Lifeteam - Arkansas | • Baptist LifeFlight 4 |
| • Air Evac Lifeteam - Batesville | • Critical Care Transport |
| • Air Evac Lifeteam - Corinth | • Hospital Wing Med Center Air Service |
| • Air Evac Lifeteam - Fayette, AL | • Med-Trans Corp dba FlightCare Rescue 9 |
| • Air Evac Lifeteam - Greenville | • Med-Trans Corp. dba FlightCare Rescue 7 |
| • Air Evac Lifeteam - Natchez | • Med-Trans Corporation dba FlightCare - Ochsner |
| • Air Evac Lifeteam - Opelousas, LA | • Med-Trans dba MedStar Air Care |
| • Air Evac Lifeteam - Poplar Bluff, MO | • North MS Emergency Services, Inc CareFlight |
| • Air Evac Lifeteam - Savannah, TN | • Pafford Air One - Alpha |
| • Air Evac Lifeteam - Tennessee | • Pafford Air One - Delta |
| • Air Evac Lifeteam - Waynesboro, TN | • Rocky Mountain Holdings, dba Air One Echo |
| • Air Med Service – Lafayette, LA | • SouthFlight – Semmes, AL |
| • Air Med Service – Baton Rouge, LA | • University Medical Center - Aircare |



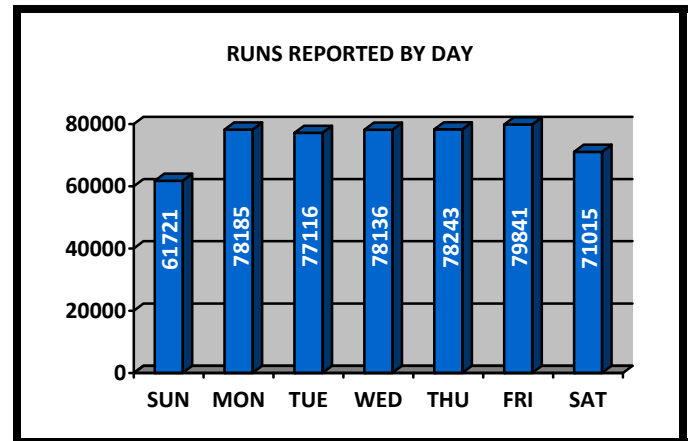
Chapter 4: Mississippi Emergency Medical Services Information System (MEMSIS)

Mississippi established the first Mississippi EMS Information System (MEMSIS) in 1992. Every licensed EMS Agency was required by law to report every EMS response to the Bureau of EMS (BEMS) electronically. This data collection system was modeled after the National Highway Traffic Safety Administration's (NHTSA) minimum data set for pre-hospital providers. In 1993, BEMS added the second component maintained information on testing, certification, and ambulance licensing.

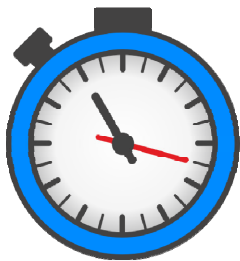
In FY'09, BEMS began the implementation of the new MEMSIS. The new MEMSIS is a web based electronic paperless patient encounter form system. MEMSIS State Bridge and MEMSIS Field Bridge for field use is provided by BEMS to all licensed ambulance services. EMS encounter information is entered into the computer locally, and is then submitted to the state real time via a web based system. The system minimizes errors and shortens time frames of when information is available to fill report requests. It also allows BEMS to collect a larger amount of data, which gives a better picture of EMS care in Mississippi.

In FY'18, Mississippi providers responded to 517,418 EMS calls. This number includes all emergency, non-emergency, medical transfer, and cancelled calls. The responses were made by ground and Air Medical EMS Agencies.

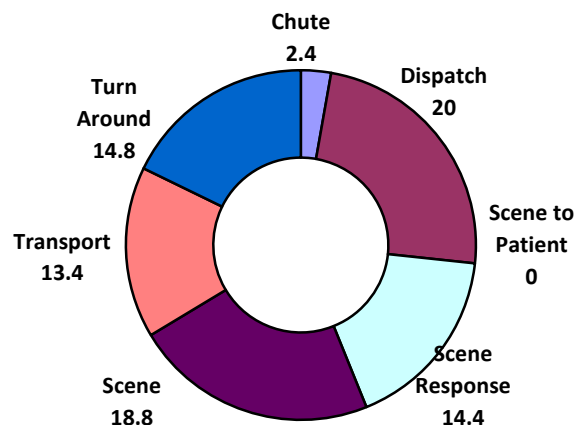
Most of these transfers occur during the week, resulting in higher percentages on these days.



The highest call volume occurred on Friday, with 15.23 percent of the total calls. A high percentage of EMS calls result from medical transfers between facilities and to-and-from home.



EMS Response Times in Minutes



The implementation of the 911 system has decreased response times between calls received, dispatched, and en route. These all occur within seconds of one another. The longest times were spent on the scene and en route to the final destination.

In FY'18, 49.51 percent of all incidents occurred in the patient's residence. Because of transfers made by EMS providers either between facilities or from the hospital after being discharged, the second largest group occurred in a Health Care Facility.

Incident Location	Total
Home/Residence	359,688
Health Care Facility	154,305
Street/Highway	71,609
Trade or Service	34,272
Residential Institution	29,414
Other Location	29,333
Public Building	18,100
Place of Recreation or Sport	2,065
Industrial Place or Premises	1,749
Airport	363
Farm	300
Lake, River, Ocean	248
Unspecified Place	80
Mine or Quarry	21

Medical transfers are those made between acute care facilities, extended care facilities, doctors' offices and clinics, and patients' homes.

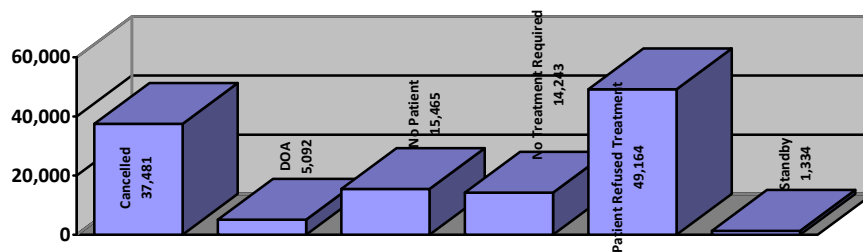
Emergency calls are normally transported to a hospital or emergency department. The types of service include:

Type of Service	# of Responses
911	405,177
Medical Transport	70,437
Interfacility Transfer (Scheduled)	35,016
Interfacility Transfer (Unscheduled)	6,450
Standby	1,615
Mutual Aid	257
Intercept	147



Of the total number of calls received, 277,273 resulted in pre-hospital care being given by EMS personnel. This includes those patients transported by EMS, by other means, or treated at the scene but not transported. Causes of no transport following an EMS call include:

Causes of No Transport Following EMS Response



Type of Response - Trauma

In Fiscal Year 2018, EMS providers responded to 70,586 trauma calls making up 13.6% of total responses.

Top Ten Categories by Frequency	# Incident
Motor Vehicle Traffic Accident	25,209
Falls	28,531
Assault	5,579
,586Other Trauma	5,061
Struck by Blunt / Thrown Object	1,558
Cut Pierce	1,254
Firearm Injury	978
Motorcycle Accident/ATV	728
Bites / Stings	495
Drug / Poison	338

Motor vehicle crashes (MVC) constituted over 35 percent of all reported trauma calls in FY'18. Trauma calls in the "Other" category include motorcycle, bicycle, pedestrian, waterway, fire/burn, hazardous materials, mass casualty incidents, ATV incidents, farm/agriculture and industrial incidents.

Motor vehicle crash (MVC) related calls totaled 25,209, the largest group of trauma calls in FY'18.

Protective devices used follow:

Use of Occupant Safety Equipment	# Incidents
Shoulder Belt	9,070
Lap Belt	6,539
Protective Safety Belt	5,448
No Safety Equipment / Devices Used	3,566
Child Restraint	665
Helmet Worn	600
Other	215
Protective Clothing / Gear	114
Protective Non-Clothing / Gear	45
Eye Protection	25

Type of Response - Medical

In the past, an ambulance was called for an emergency medical condition, such as a heart attack, or in the event of an accident causing a traumatic injury. Today, the EMS Systems continues to evolve through the provision of advanced emergency care including high-level assessment, complex invasive skills, and a wide range of pharmacological interventions.

Illustrated are some of the Illnesses reported with the medical calls received in FY'18.

Reported		Percent
Abdominal Pain/Problems	14,571	2.78
Allergic Reaction	1,698	.32
Altered Level of Consciousness	17,090	3.43
Behavioral/Psychiatric Disorder	24,030	4.58
Cardiac/Cardiac Arrest	28,711	5.48
Diabetic Hyper-/Hypoglycemia	8,077	1.54
General Malaise	14,198	2.71
Nausea/Vomiting	6,281	1.2
Pain	23,453	4.47
Respiratory Distress	19,799	3.77
Seizure	10,404	1.98
Stroke/CVA	3,484	.66
Syncope/Fainting	8,036	1.53
Weakness	16,336	3.12
Substance/Drug Poisoning	5,434	1.03



County Summaries

The following pages provide information on county-by-county basis. Listed are the providers of emergency medical care, call volume by reporting county and EMSOF grant funding (based on population) disbursements, collections, recipients, and uses.

Adams

2010 Census Population 32,297

EMS Agencies

- American Medical Response dba Metro Rural Service
- Miss Lou

Level of Ground Service

- Advanced Life Support

Air Medical EMS Agency

- Air Evac

EMS Responses 9,436

EMS Personnel

EMTs 13

Paramedics 7

EMS Operating Fund

- Eligible \$19,637
- Disbursed \$19,637

EMSOF Grant Recipient

Adams County

EMSOF Grant User(s)

Adams County

American Medical Response

Alcorn

2010 Census Population 37,057

EMS Agency

- Magnolia Emergency Medical Services

Level of Ground Service

- Advanced Life Support

Air Medical EMS Agency

- Air Evac

EMS Responses 7,936

EMS Personnel

EMTs 19

Paramedics 26

EMS Operating Fund

- Eligible \$22,531
- Disbursed \$22,531

EMSOF Grant Recipient

Alcorn County

EMSOF Grant User(s)

Alcorn County

Amite

2010 Census Population 13,131

EMS Agency

- American Medical Response

Level of Ground Service

- Advanced Life Support

Air Medical EMS Agency

- Not Applicable

EMS Responses 2,161

EMS Personnel

EMTs 8

Paramedics 9

EMS Operating Fund

- Eligible \$7,982
- Disbursed \$7,982

EMSOF Grant Recipient

Amite County

City of Gloster (Did Not Apply)

EMSOF Grant User(s)

Amite County

American Medical Response

Attala

2010 Census Population 19,564

EMS Agency

- MedStat Ambulance Service

Level of Ground Service

- Advanced Life Support

Air Medical EMS Agency

- Not Applicable

EMS Responses 2,959

EMS Personnel

EMTs 12

Paramedics 10

EMS Operating Fund

- Eligible \$11,984
- Disbursed \$11,894

EMSOF Grant Recipient

Attala County

City of Kosciusko

EMSOF Grant User(s)

Attala County

MedStat Ambulance

City of Kosciusko

Benton

2010 Census Population 8,729

EMS Agency

- MedStat Ambulance Service

Level of Ground Service

- Advanced Life Support

Air Medical EMS Agency

- Not Applicable

EMS Responses 914

EMS Personnel

EMTs 5

Paramedics 8

EMS Operating Fund

- Eligible \$5,307
- Disbursed \$5,307

EMSOF Grant Recipient

Benton County

EMSOF Grant User(s)

Benton County

MedStat Ambulance

Bolivar

2010 Census Population 34,145

EMS Agency

- Pafford

Level of Ground Service

- Advanced Life Support

Air Medical EMS Agency

- Not Applicable

EMS Responses 8,101

EMS Personnel

EMTs 9

Paramedics 11

EMS Operating Fund

- Eligible \$20,760
- Disbursed \$20,760

EMSOF Grant Recipient

Bolivar County

EMSOF Grant User(s)

Bolivar County

Calhoun

2010 Census Population 14,962

EMS Agency

- Shoals Baptist

Level of Ground Service

- Advanced Life Support

Air Medical EMS Agency

- Not Applicable

EMS Responses 1,850

EMS Personnel

EMTs 5

Paramedics 3

EMS Operating Fund

- Eligible \$9,097
- Disbursed \$9,097

EMSOF Grant Recipient

Calhoun County

EMSOF Grant User(s)

Calhoun Health Services

Carroll

2010 Census Population 10,597

EMS Agency

- MedStat

Level of Ground Service

- Advanced Life Support

Air Medical EMS Agency

- Not Applicable

EMS Responses 959

EMS Personnel

EMTs 1

Paramedics 3

EMS Operating Fund

- Eligible \$6,443
- Disbursed \$6,443

EMSOF Grant Recipient

Carroll County

EMSOF Grant User(s)

Carroll County

MedStat Ambulance

Chickasaw

2010 Census Population 17,392

EMS Agency

- CareMed

Level of Ground Service

- Advanced Life Support

Air Medical EMS Agency

- Not Applicable

EMS Responses 2,100

EMS Personnel

EMTs 7

Paramedics 7

EMS Operating Fund

- Eligible \$10,574
- Disbursed \$10,574

EMSOF Grant Recipient

Chickasaw County

EMSOF Grant User(s)

Chickasaw County

Choctaw

2010 Census Population 8,547

EMS Agency

- MedStat

Level of Ground Service

- Advanced Life Support

Air Medical EMS Agency

- Not Applicable

EMS Responses 834

EMS Personnel

EMTs 3

Paramedics 7

EMS Operating Fund

- Eligible \$5,197
- Disbursed \$5,197

EMSOF Grant Recipient

Choctaw County

EMSOF Grant User(s)

Choctaw County

MedStat Ambulance

Claiborne

2010 Census Population 9,604

EMS Agency

- A Superior Ambulance Service

Level of Ground Service

- Advanced Life Support

Air Medical EMS Agency

- Not Applicable

EMS Responses..... 1,038

EMS Personnel

EMTs 7

Paramedics..... 2

EMS Operating Fund

- Eligible \$5,826
- Disbursed \$0

EMSOF Grant Recipient

Not Applicable

EMSOF Grant User(s)

Not Applicable

Clarke

2010 Census Population 16,732

EMS Agency

- Paratech EMS

Level of Ground Service

- Advanced Life Support

Air Medical EMS Agency

- Not Applicable

EMS Responses..... 951

EMS Personnel

EMTs 17

Paramedics..... 15

EMS Operating Fund

- Eligible \$10,173
- Disbursed \$10,173

EMSOF Grant Recipient

Clarke County

EMSOF Grant User(s)

Clarke County

Clay

2010 Census Population 20,634

EMS Agency

- North Mississippi Medical Center

Level of Ground Service

- Advanced Life Support

Air Medical EMS Agency

- Not Applicable

EMS Responses..... 2,742

EMS Personnel

EMTs 13

Paramedics..... 5

EMS Operating Fund

- Eligible \$12,517
- Disbursed \$12,517

EMSOF Grant Recipient

Not Applicable

EMSOF Grant User(s)

Not Applicable

Coahoma

2010 Census Population 26,151

EMS Agency

- Pafford

Level of Ground Service

- Advanced Life Support

Air Medical EMS Agency

- Pafford Air One - Delta

EMS Responses..... 6,126

EMS Personnel

EMTs 8

Paramedics..... 5

EMS Operating Fund

- Eligible \$15,900
- Disbursed \$15,900

EMSOF Grant Recipient

Coahoma County

EMSOF Grant User(s)

Coahoma County

Pafford EMS

Copiah

2010 Census Population 29,449

EMS Agency

- A Superior Ambulance Service

Level of Ground Service

- Advanced Life Support

Air Medical EMS Agency

- Not Applicable

EMS Responses..... 3,344

EMS Personnel

EMTs 19

Paramedics..... 11

EMS Operating Fund

- Eligible \$17,905
- Disbursed \$17,905

EMSOF Grant Recipient

Copiah County

EMSOF Grant User(s)

Copiah County

A Superior Ambulance Service

Covington

2010 Census Population 19,568

EMS Agency

- Covington County Hospital EMS

Level of Ground Service

- Advanced Life Support

Air Medical EMS Agency

- Not Applicable

EMS Responses..... 3,710

EMS Personnel

EMTs 10

Paramedics..... 16

EMS Operating Fund

- Eligible \$11,897
- Disbursed \$11,897

EMSOF Grant Recipient

Covington County

EMSOF Grant User(s)

Covington County

De Soto

2010 Census Population 161,252

EMS Agencies

- DeSoto County EMS
- Hernando Fire Department
- Horn Lake Fire Department
- Olive Branch Fire Department
- Southaven Fire Department

Level of Ground Service

- Advanced Life Support

Air Medical EMS Agency

- Not Applicable

EMS Responses..... 20,936

EMS Personnel

EMTs 130
Paramedics..... 127

EMS Operating Fund

- Eligible \$98,041
- Disbursed \$98,041

EMSOF Grant Recipient

DeSoto County
City of Hernando
City of Horn Lake
City of Olive Branch
City of Southaven

EMSOF Grant User(s)

DeSoto County EMS
Horn Lake Fire Department
Hernando Fire Department
Olive Branch Fire Department
Southaven Fire Department

Forrest

2010 Census Population 74,934

EMS Agency

- AAA Ambulance Service

Level of Ground Service

- Advanced Life Support

Air Medical EMS Agency

- Ochsner's Flight Care – Med Trans Rescue 7

EMS Responses..... 18,586

EMS Personnel

EMTs 39
Paramedics..... 41

EMS Operating Fund

- Eligible \$45,485
- Disbursed..... \$45,485

EMSOF Grant Recipient

Southeast MS Air Ambulance District (SEMADD)

EMSOF Grant User(s)

Southeast MS Air Ambulance District (SEMADD)

Franklin

2010 Census Population 8,118

EMS Agency

- Rural Rapid Response

Level of Ground Service

- Advanced Life Support

Air Medical EMS Agency

- Not Applicable

EMS Responses 1,192

EMS Personnel

EMTs 5

Paramedics 4

EMS Operating Fund

- Eligible \$4,936
- Disbursed \$4,936

EMSOF Grant Recipient

Franklin County

EMSOF Grant User(s)

Franklin County

Rural Rapid Response

George

2010 Census Population 22,578

EMS Agency

- A Superior Ambulance Service

Level of Ground Service

- Advanced Life Support

Air Medical EMS Agency

- Not Applicable

EMS Responses 2,535

EMS Personnel

EMTs 14

Paramedics 11

EMS Operating Fund

- Eligible \$13,727
- Disbursed \$13,727

EMSOF Grant Recipient

George County

EMSOF Grant User(s)

George County

A Superior Ambulance Service

Greene

2010 Census Population 14,400

EMS Agency

- A Superior Ambulance Service

Level of Ground Service

- Advanced Life Support

Air Medical EMS Agency

- Not Applicable

EMS Responses..... 1,143

EMS Personnel

EMTs 2

Paramedics..... 9

EMS Operating Fund

- Eligible \$8,741
- Disbursed \$8,741

EMSOF Grant Recipient

Southeast MS Air Ambulance District (SEMAAD)

EMSOF Grant User(s)

Southeast MS Air Ambulance District (SEMAAD)

Grenada

2010 Census Population 21,906

EMS Agency

- University of Mississippi Medical Center at Grenada

Level of Ground Service

- Advanced Life Support

Air Medical EMS Agency

- Not Applicable

EMS Responses..... 349

EMS Personnel

EMTs 21

Paramedics..... 28

EMS Operating Fund

- Eligible \$13,319
- Disbursed \$13,319

EMSOF Grant Recipient

Grenada County

EMSOF Grant User(s)

Grenada County

University of Mississippi Medical Center at Grenada

Hancock

2010 Census Population 43,929

EMS Agency

- American Medical Response - Gulfport

Level of Ground Service

- Advanced Life Support

Air Medical EMS Agency

- Not Applicable

EMS Responses..... 6,704

EMS Personnel

EMTs 10

Paramedics..... 13

EMS Operating Fund

- Eligible \$26,709
- Disbursed \$26,709

EMSOF Grant Recipient

Hancock County

EMSOF Grant User(s)

Hancock County

American Medical Response - Gulfport

Harrison

2010 Census Population 187,105

EMS Agency

- American Medical Response - Gulfport

Level of Ground Service

- Advanced Life Support

Air Medical EMS Agency

- Flight Care Rescue 5

EMS Responses..... 42,907

EMS Personnel

EMTs 200

Paramedics..... 99

EMS Operating Fund

- Eligible \$113,760
- Disbursed \$113,760

EMSOF Grant Recipient

Harrison County

EMSOF Grant User(s)

Harrison County

Hinds

2010 Census Population 245,285

EMS Agency

- American Medical Response - Jackson

Level of Ground Service

- Advanced Life Support

Air Medical EMS Agency

- UMMC AirCare - AC-1

EMS Responses..... 61,556

EMS Personnel

EMTs 148

Paramedics..... 60

EMS Operating Fund

- Eligible \$148,133
- Disbursed \$148,133

EMSOF Grant Recipient

Hinds County

EMSOF Grant User(s)

Hinds County

American Medical Response - Jackson

Holmes

2010 Census Population 19,198

EMS Agency

- MedStat

Level of Ground Service

- Advanced Life Support

Air Medical EMS Agency

- Not Applicable

EMS Responses..... 2,952

EMS Personnel

EMTs 6

Paramedics..... 2

EMS Operating Fund

- Eligible \$11,672
- Disbursed \$11,672

EMSOF Grant Recipient

Holmes County

EMSOF Grant User(s)

Holmes County

MedStat Ambulance

Humphreys

2010 Census Population 9,375

EMS Agency

- Sharkey Issaquena Community Hospital

Level of Ground Service

- Basic Life Support

Air Medical EMS Agency

- Not Applicable

EMS Responses..... 1,463

EMS Personnel

EMTs 2

Paramedics..... 1

EMS Operating Fund

- Eligible \$5,700
- Disbursed \$5,700

EMSOF Grant Recipient

Humphreys County

EMSOF Grant User(s)

Humphreys County

MedStat Ambulance

Issaquena-Sharkey

2010 Census Population 6,322

EMS Agency

- Sharkey-Issaquena Community Hospital

Level of Ground Service

- Basic Life Support

Air Medical EMS Agency

- Not Applicable

EMS Responses..... 539

EMS Personnel

EMTs 3

Paramedics..... 2

EMS Operating Fund

- Eligible \$3,835
- Disbursed \$0

EMSOF Grant Recipient

Sharkey County

Issaquena County

EMSOF Grant User(s)

Sharkey-Issaquena Community Hospital

Itawamba

2010 Census Population 23,401

EMS Agency

- North Mississippi Medical Center - Tupelo

Level of Ground Service

- Advanced Life Support

Air Medical EMS Agency

- Not Applicable

EMS Responses..... 9,445

EMS Personnel

EMTs 13

Paramedics..... 7

EMS Operating Fund

- Eligible \$14,228
- Disbursed \$14,228

EMSOF Grant Recipient

Itawamba County

EMSOF Grant User(s)

Itawamba County

North Mississippi Medical Center - Tupelo

Jackson

2010 Census Population 139,668

EMS Agency

- Acadian Ambulance Service

Level of Ground Service

- Advanced Life Support

Air Medical EMS Agency

- Not Applicable

EMS Responses..... 13,136

EMS Personnel

EMTs 50

Paramedics..... 33

EMS Operating Fund

- Eligible \$84,918
- Disbursed \$84,918

EMSOF Grant Recipient

Jackson County

EMSOF Grant User(s)

Jackson County

Acadian Ambulance Service

Jasper

2010 Census Population 17,062

EMS Agency

- A Superior Ambulance Service

Level of Ground Service

- Advanced Life Support

Air Medical EMS Agency

- Not Applicable

EMS Responses..... 1,937

EMS Personnel

EMTs 6

Paramedics..... 5

EMS Operating Fund

- Eligible \$10,374
- Disbursed \$10,374

EMSOF Grant Recipient

South Central EMS District (SCEMSD)

EMSOF Grant User(s)

South Central EMS District (SCEMSD)
A Superior Ambulance Service

Jefferson

2010 Census Population 7,726

EMS Agency

- A Superior Ambulance Service

Level of Ground Service

- Advanced Life Support

Air Medical EMS Agency

- Not Applicable

EMS Responses..... 1,307

EMS Personnel

EMTs 3

Paramedics..... 6

EMS Operating Fund

- Eligible \$4,697
- Disbursed \$4,697

EMSOF Grant Recipient

Jefferson County

EMSOF Grant User(s)

Jefferson County

Jefferson Davis

2010 Census Population 12,487

EMS Agency

- AAA Ambulance Service

Level of Ground Service

- Advanced Life Support

Air Medical EMS Agency

- Not Applicable

EMS Responses..... 1,778

EMS Personnel

EMTs 4

Paramedics..... 6

EMS Operating Fund

- Eligible \$7,580

- Disbursed \$7,580

EMSOF Grant Recipient

Southeast MS Air Ambulance District (SEMAAD)

EMSOF Grant User(s)

Southeast MS Air Ambulance District (SEMAAD)

Jones

2010 Census Population 67,761

EMS Agency

- EMServ

Level of Ground Service

- Advanced Life Support

Air Medical EMS Agency

- Not Applicable

EMS Responses..... 11,363

EMS Personnel

EMTs 35

Paramedics..... 49

EMS Operating Fund

- Eligible \$41,199

- Disbursed \$41,199

EMSOF Grant Recipient

South Central EMS District (SCEMSD)

EMSOF Grant User(s)

South Central EMS District (SCEMSD)

Kemper

2010 Census Population 10,456

EMS Agency

- LifeCare EMS

Level of Ground Service

- Advanced Life Support

Air Medical EMS Agency

- Not Applicable

EMS Responses..... 1,539

EMS Personnel

EMTs 4

Paramedics..... 2

EMS Operating Fund

- Eligible \$6,357
- Disbursed \$6,357

EMSOF Grant Recipient

Kemper County

EMSOF Grant User(s)

Kemper County
LifeCare EMS

Lafayette

2010 Census Population 47,351

EMS Agency

- Shoals dba Baptist

Level of Ground Service

- Advanced Life Support

Air Medical EMS Agency

- Not Applicable

EMS Responses..... 5 026

EMS Personnel

EMTs 19

Paramedics..... 20

EMS Operating Fund

- Eligible \$28,789
- Disbursed \$28,789

EMSOF Grant Recipient

Lafayette County

EMSOF Grant User(s)

Lafayette County
Shoals dba Baptist

Lamar

2010 Census Population 55,658

EMS Agency

- Lifeguard Ambulance Service

Level of Ground Service

- Advanced Life Support

Air Medical EMS Agency

- Not Applicable

EMS Responses..... 2,084

EMS Personnel

EMTs 24

Paramedics..... 33

EMS Operating Fund

- Eligible \$33,840
- Disbursed \$33,840

EMSOF Grant Recipient

Lamar County

EMSOF Grant User(s)

Lamar County

Lifeguard Ambulance Service

Lauderdale

2010 Census Population 80,261

EMS Agency

- Metro Ambulance Service

Level of Ground Service

- Advanced Life Support

Air Medical EMS Agency

- University of Mississippi Medical Center Air Care

EMS Responses..... 19,225

EMS Personnel

EMTs 44

Paramedics..... 24

EMS Operating Fund

- Eligible \$48,799
- Disbursed \$48,799

EMSOF Grant Recipient

Lauderdale County

EMSOF Grant User(s)

Lauderdale County

Lawrence

2010 Census Population 12,929

EMS Agency

- AAA Ambulance Service

Level of Ground Service

- Advanced Life Support

Air Medical EMS Agency

- Not Applicable

EMS Responses..... 2,053

EMS Personnel

EMTs 11

Paramedics..... 17

EMS Operating Fund

- Eligible \$7,861
- Disbursed \$7,861

EMSOF Grant Recipient

Lawrence County

EMSOF Grant User(s)

Lawrence County

Leake

2010 Census Population 23,805

EMS Agency

- Carthage EMS

Level of Ground Service

- Advanced Life Support

Air Medical EMS Agency

- Not Applicable

EMS Responses..... 3,930

EMS Personnel

EMTs 20

Paramedics..... 12

EMS Operating Fund

- Eligible \$14,473
- Disbursed \$14,473

EMSOF Grant Recipient

Leake County

EMSOF Grant User(s)

Leake County

Carthage EMS

Lee

2010 Census Population 82,910

EMS Agency

- North MS Medical Center-Tupelo

Level of Ground Service

- Advanced Life Support

Air Medical EMS Agency

- North MS Ambulance Service dba CareFlight

EMS Responses..... 16,998

EMS Personnel

EMTs 30

Paramedics..... 58

EMS Operating Fund

- Eligible \$50,409
- Disbursed \$50,409

EMSOF Grant Recipient

Lee County

EMSOF Grant User(s)

Lee County

North MS EMS Authority District

Leflore

2010 Census Population 32,317

EMS Agency

- MedStat Ambulance

Level of Ground Service

- Advanced Life Support

Air Medical EMS Agency

- University of Mississippi Medical Center Air Care

EMS Responses..... 891

EMS Personnel

EMTs 5

Paramedics..... 4

EMS Operating Fund

- Eligible \$19,649
- Disbursed \$19,649

EMSOF Grant Recipient

Leflore County

EMSOF Grant User(s)

Leflore County

MedStat Ambulance

Lincoln

2010 Census Population 34,869

EMS Agency

- King's Daughter Medical Center

Level of Ground Service

- Advanced Life Support

Air Medical EMS Agency

- Baptist Life Flight 4

EMS Responses..... 5,630

EMS Personnel

EMTs 15

Paramedics..... 18

EMS Operating Fund

- Eligible \$21,200
- Disbursed \$21,200

EMSOF Grant Recipient

Lincoln County

EMSOF Grant User(s)

Lincoln County

King's Daughters Medical Center EMS

Lowndes

2010 Census Population 59,779

EMS Agency

- Shoals dba Baptist

Level of Ground Service

- Advanced Life Support

Air Medical EMS Agency

- University of Mississippi Medical Center Air Care

EMS Responses..... 10,588

EMS Personnel

EMTs 62

Paramedics..... 22

EMS Operating Fund

- Eligible \$36,262
- Disbursed \$0

EMSOF Grant Recipient

Not Applicable

EMSOF Grant User(s)

Not Applicable

Madison

2010 Census Population 95,203

EMS Agency

- Pafford EMS

Level of Ground Service

- Advanced Life Support

Air Medical EMS Agency

- Not Applicable

EMS Responses..... 12,469

EMS Personnel

EMTs 126

Paramedics..... 55

EMS Operating Fund

Eligible \$57,883

Disbursed \$57,883

EMSOF Grant Recipient

Madison County

EMSOF Grant User(s)

Madison County

Pafford EMS

Marion

2010 Census Population 27,088

EMS Agency

- AAA Ambulance Service

Level of Ground Service

- Advanced Life Support

Air Medical EMS Agency

- Not Applicable

EMS Responses..... 5,327

EMS Personnel

EMTs 13

Paramedics..... 12

EMS Operating Fund

Eligible \$16,442

Disbursed \$16,442

EMSOF Grant Recipient

Southeast MS Air Ambulance District (SEMAAD)

EMSOF Grant User(s)

Southeast MS Air Ambulance District (SEMAAD)

Marshall

2010 Census Population 37,144

EMS Agency

- CareMed

Level of Ground Service

- Advanced Life Support

Air Medical EMS Agency

- Not Applicable

EMS Responses..... 4,771

EMS Personnel

EMTs 10

Paramedics..... 6

EMS Operating Fund

Eligible \$22,584

Disbursed \$22,584

EMSOF Grant Recipient

Marshall County

EMSOF Grant User(s)

Marshall County

CareMed

Monroe

2010 Census Population 36,989

EMS Agency

- MedStat

Level of Ground Service

- Advanced Life Support

Air Medical EMS Agency

- Not Applicable

EMS Responses..... 5,578

EMS Personnel

EMTs 17

Paramedics..... 20

EMS Operating Fund

Eligible \$22,489

Disbursed \$22,489

EMSOF Grant Recipient

Monroe County

EMSOF Grant User(s)

Monroe County

MedStat Ambulance

Montgomery

2010 Census Population 10,925

EMS Agency

- MedStat EMS

Level of Ground Service

- Advanced Life Support

Air Medical EMS Agency

- Not Applicable

EMS Responses..... 2,573

EMS Personnel

EMTs 8

Paramedics..... 22

EMS Operating Fund

Eligible \$6,642

Disbursed \$6,642

EMSOF Grant Recipient

Montgomery County

EMSOF Grant User(s)

Montgomery County

Neshoba

2010 Census Population 29,676

EMS Agency

- Neshoba County Ambulance Service
- Choctaw Health Center

Level of Ground Service

- Advanced Life Support

Air Medical EMS Agency

- Not Applicable

EMS Responses..... 1,379

EMS Personnel

EMTs 40

Paramedics..... 27

EMS Operating Fund

Eligible \$18,043

Disbursed \$18,043

EMSOF Grant Recipient

Neshoba County

EMSOF Grant User(s)

Neshoba County Ambulance Service

Newton

2010 Census Population 21,720

EMS Agency

- LifeCare EMS

Level of Ground Service

- Advanced Life Support

Air Medical EMS Agency

- Not Applicable

EMS Responses..... 3,806

EMS Personnel

EMTs 21

Paramedics..... 23

EMS Operating Fund

Eligible \$13,206

Disbursed \$13,206

EMSOF Grant Recipient

Newton County

EMSOF Grant User(s)

Newton County

LifeCare EMS

Noxubee

2010 Census Population 11,545

EMS Agency

- LifeCare EMS

Level of Ground Service

- Advanced Life Support

Air Medical EMS Agency

- Not Applicable

EMS Responses..... 1,394

EMS Personnel

EMTs 3

Paramedics..... 1

EMS Operating Fund

Eligible \$7,019

Disbursed \$7,019

EMSOF Grant Recipient

Noxubee County

EMSOF Grant User(s)

Noxubee County

LifeCare EMS

Oktribbeha

2010 Census Population 47,671

EMS Agency

- Oktribbeha County Hospital EMS

Level of Ground Service

- Advanced Life Support

Air Medical EMS Agency

- North MS Ambulance Service dba CareFlight

EMS Responses..... 4,319

EMS Personnel

EMTs 49

Paramedics..... 13

EMS Operating Fund

Eligible \$28,984

Disbursed \$28,984

EMSOF Grant Recipient

Oktribbeha County
City of Starkville

EMSOF Grant User(s)

Oktribbeha County Hospital EMS

Panola

2010 Census Population 34,707

EMS Agency

- Lifeguard EMS

Level of Ground Service

- Advanced Life Support

Air Medical EMS Agency

- Air Evac

EMS Responses..... 448

EMS Personnel

EMTs 13

Paramedics..... 14

EMS Operating Fund

Eligible \$21,102

Disbursed \$21,102

EMSOF Grant Recipient

Panola County

EMSOF Grant User(s)

Panola County
Lifeguard EMS

Pearl River

2010 Census Population 55,834

EMS Agency

- AAA Ambulance Service

Level of Ground Service

- Advanced Life Support

Air Medical EMS Agency

- Not Applicable

EMS Responses..... 9,429

EMS Personnel

EMTs 23

Paramedics..... 22

EMS Operating Fund

Eligible \$33,891

Disbursed \$33,891

EMSOF Grant Recipient

Southeast MS Air Ambulance District (SEMAAD)

EMSOF Grant User(s)

Southeast MS Air Ambulance District (SEMAAD)

Perry

2010 Census Population 12,250

EMS Agency

- AAA Ambulance Service

Level of Ground Service

- Advanced Life Support

Air Medical EMS Agency

- Not Applicable

EMS Responses..... 1,324

EMS Personnel

EMTs 2

Paramedics..... 8

EMS Operating Fund

Eligible \$7,435

Disbursed..... \$7,435

EMSOF Grant Recipient

Southeast MS Air Ambulance District (SEMAAD)

EMSOF Grant User(s)

Southeast MS Air Ambulance District (SEMAAD)

Pike

2010 Census Population 40,404

EMS Agency

- AAA Ambulance Service

Level of Ground Service

- Advanced Life Support

Air Medical EMS Agency

- Med Trans Rescue 9 (Ochsner's Flight)

EMS Responses..... 8,957

EMS Personnel

EMTs 14

Paramedics..... 10

EMS Operating Fund

Eligible \$24,509

Disbursed \$0

EMSOF Grant Recipient

Not Applicable

EMSOF Grant User(s)

Not Applicable

Pontotoc

2010 Census Population 29,957

EMS Agency

- North Mississippi Medical Center - Tupelo

Level of Ground Service

- Advanced Life Support

Air Medical EMS Agency

- Not Applicable

EMS Responses..... 3,306

EMS Personnel

EMTs 15

Paramedics..... 23

EMS Operating Fund

Eligible \$18,214

Disbursed \$18,214

EMSOF Grant Recipient

Pontotoc County

EMSOF Grant User(s)

North Mississippi EMS Authority

Prentiss

2010 Census Population 25,276

EMS Agency

- AAA Ambulance Service

Level of Ground Service

- Advanced Life Support

Air Medical EMS Agency

- Not Applicable

EMS Responses..... 2,019

EMS Personnel

EMTs 6
Paramedics..... 21

EMS Operating Fund

Eligible \$15,332
Disbursed \$0

EMSOF Grant Recipient

Prentiss County

EMSOF Grant User(s)

Prentiss County
AAA Ambulance Service

Quitman

2010 Census Population 8,223

EMS Agency

- Quitman County Ambulance Service

Level of Ground Service

- Basic Life Support

Air Medical EMS Agency

- Not Applicable

EMS Responses..... 775

EMS Personnel

EMTs 5
Paramedics..... 0

EMS Operating Fund

Eligible \$5,000
Disbursed \$5,000

EMSOF Grant Recipient

Quitman County

EMSOF Grant User(s)

Quitman County Ambulance Service

Rankin

2010 Census Population. 141,617

EMS Agency

- Pafford EMS

Level of Ground Service

- Advanced Life Support

Air Medical EMS Agency

- Not Applicable

EMS Responses. 18,145

EMS Personnel

EMTs 241

Paramedics. 158

EMS Operating Fund

Eligible \$86,104

Disbursed \$86,104

EMSOF Grant Recipient

Rankin County
City of Brandon
City of Pearl

EMSOF Grant User(s)

Rankin County
City of Brandon
City of Pearl

Scott

2010 Census Population 28,264

EMS Agency

- LifeCare EMS

Level of Ground Service

- Advanced Life Support

Air Medical EMS Agency

- Not Applicable

EMS Responses. 5,121

EMS Personnel

EMTs 12

Paramedics. 20

EMS Operating Fund

Eligible \$17,185

Disbursed \$17,185

EMSOF Grant Recipient

Scott County

EMSOF Grant User(s)

Scott County
LifeCare EMS

Simpson

2010 Census Population 27,503

EMS Agency

- American Medical Response

Level of Ground Service

- Advanced Life Support

Air Medical EMS Agency

- Not Applicable

EMS Responses..... 4,055

EMS Personnel

EMTs 18

Paramedics..... 9

EMS Operating Fund

Eligible \$16,722

Disbursed \$16,722

EMSOF Grant Recipient

Simpson County

EMSOF Grant User(s)

Simpson County

American Medical Response

Smith

2010 Census Population 16,491

EMS Agency

- American Medical Response

Level of Ground Service

- Advanced Life Support

Air Medical EMS Agency

- Not Applicable

EMS Responses..... 967

EMS Personnel

EMTs 5

Paramedics..... 7

EMS Operating Fund

Eligible \$10,027

Disbursed \$10,027

EMSOF Grant Recipient

Smith County

EMSOF Grant User(s)

Smith County

American Medical Response

Stone

2010 Census Population 17,786

EMS Agency

- Stone County Hospital

Level of Ground Service

- Advanced Life Support

Air Medical EMS Agency

- Not Applicable

EMS Responses..... 2,816

EMS Personnel

EMTs 19

Paramedics..... 11

EMS Operating Fund

Eligible \$10,814

Disbursed \$10,814

EMSOF Grant Recipient

Stone County

EMSOF Grant User(s)

Southeast MS Air Ambulance District (SEMAAD)

Sunflower

2010 Census Population 29,450

EMS Agency

- Pafford EMS

Level of Ground Service

- Advanced Life Support

Air Medical EMS Agency

- Not Applicable

EMS Responses..... 4,231

EMS Personnel

EMTs 4

Paramedics..... 1

EMS Operating Fund

Eligible \$17,906

Disbursed \$17,906

EMSOF Grant Recipient

Sunflower County

EMSOF Grant User(s)

Sunflower County

Tallahatchie

2010 Census Population 15,378

EMS Agency

- Pafford EMS

Level of Ground Service

- Advanced Life Support

Air Medical EMS Agency

- Not Applicable

EMS Responses..... 1,784

EMS Personnel

EMTs 3

Paramedics..... 5

EMS Operating Fund

Eligible \$9,350

Disbursed \$9,350

EMSOF Grant Recipient

Tallahatchie County

EMSOF Grant User(s)

Tallahatchie County

Pafford EMS

Tate

2010 Census Population 28,886

EMS Agency

- Pafford EMS

Level of Ground Service

- Advanced Life Support

Air Medical EMS Agency

- Not Applicable

EMS Responses..... 4,832

EMS Personnel

EMTs 18

Paramedics..... 17

EMS Operating Fund

Eligible \$17,533

Disbursed \$0

EMSOF Grant Recipient

Tate County

EMSOF Grant User(s)

Tate County

Pafford EMS

Tippah

2010 Census Population 22,232

EMS Agency

- Tippah County Hospital

Level of Ground Service

- Advanced Life Support

Air Medical EMS Agency

- Not Applicable

EMS Responses..... 2,810

EMS Personnel

EMTs 9

Paramedics..... 13

EMS Operating Fund

Eligible \$13,517

Disbursed \$13,517

EMSOF Grant Recipient

Tippah County

EMSOF Grant User(s)

Tippah County Hospital

Tishomingo

2010 Census Population 19,593

EMS Agency

- North Mississippi Medical Center - Tupelo

Level of Ground Service

- Advanced Life Support

Air Medical EMS Agency

- Not Applicable

EMS Responses..... 3,364

EMS Personnel

EMTs 15

Paramedics..... 15

EMS Operating Fund

Eligible \$11,913

Disbursed \$11,913

EMSOF Grant Recipient

Tishomingo County

EMSOF Grant User(s)

Tishomingo County

North Mississippi Medical Center Tupelo

Tunica

2010 Census Population 10,778

EMS Agency

- Pafford EMS

Level of Ground Service

- Advanced Life Support

Air Medical EMS Agency

- Not Applicable

EMS Responses..... 4,634

EMS Personnel

EMTs 3
Paramedics..... 2

EMS Operating Fund

Eligible \$6,542
Disbursed \$0

EMSOF Grant Recipient

Not Applicable

EMSOF Grant User(s)

Not Applicable

Union

2010 Census Population 27,134

EMS Agency

- Shoals dba Baptist

Level of Ground Service

- Advanced Life Support

Air Medical EMS Agency

- Not Applicable

EMS Responses..... 1,888

EMS Personnel

EMTs 12
Paramedics..... 13

EMS Operating Fund

Eligible \$16,470
Disbursed \$0

EMSOF Grant Recipient

Not Applicable

EMSOF Grant User(s)

Not Applicable

Walthall

2010 Census Population 15,443

EMS Agency

- AAA Ambulance Service

Level of Ground Service

- Advanced Life Support

Air Medical EMS Agency

- Not Applicable

EMS Responses 1,778

EMS Personnel

EMTs 8

Paramedics 10

EMS Operating Fund

Eligible \$9,373

Disbursed \$9,373

EMSOF Grant Recipient

Southeast MS Air Ambulance District (SEMADD)

EMSOF Grant User(s)

Southeast MS Air Ambulance District (SEMADD)

Warren

2010 Census Population 24,917

EMS Agency

- Vicksburg Fire Department

Level of Ground Service

- Advanced Life Support

Air Medical EMS Agency

- Not Applicable

EMS Responses 9,067

EMS Personnel

EMTs 75

Paramedics 28

EMS Operating Fund

Eligible \$29,694

Disbursed \$29,694

EMSOF Grant Recipient

Warren County
City of Vicksburg

EMSOF Grant User(s)

Vicksburg Fire Department

Washington

2010 Census Population 51,137

EMS Agency

- Pafford EMS

Level of Ground Service

- Advanced Life Support

Air Medical EMS Agency

- Air Evac

EMS Responses..... 11,704

EMS Personnel

EMTs 10

Paramedics..... 10

EMS Operating Fund

Eligible \$31,040

Disbursed \$0

EMSOF Grant Recipient

Not Applicable

EMSOF Grant User(s)

Not Applicable

Wayne

2010 Census Population 20,747

EMS Agency

- Wayne General Hospital

Level of Ground Service

- Advanced Life Support

Air Medical EMS Agency

- Not Applicable

EMS Responses..... 3,262

EMS Personnel

EMTs 9

Paramedics..... 10

EMS Operating Fund

Eligible \$12,614

Disbursed \$12,614

EMSOF Grant Recipient

Wayne County

EMSOF Grant User(s)

Wayne General Hospital

Webster

2010 Census Population 10,253

EMS Agency

- North Mississippi Medical Center - Tupelo

Level of Ground Service

- Advanced Life Support

Air Medical EMS Agency

- Not Applicable

EMS Responses. 1,661

EMS Personnel

EMTs 21

Paramedics. 13

EMS Operating Fund

Eligible \$6,234

Disbursed \$6,234

EMSOF Grant Recipient

Webster County

EMSOF Grant User(s)

North Mississippi EMS Authority

Wilkinson

2010 Census Population 9,878

EMS Agency

- American Medical Response-Natchez

Level of Ground Service

- Advanced Life Support

Air Medical EMS Agency

- Not Applicable

EMS Responses. 635

EMS Personnel

EMTs 0

Paramedics. 0

EMS Operating Fund

Eligible \$5,995

Disbursed. \$ 0

EMSOF Grant Recipient

Not Applicable

EMSOF Grant User(s)

Not Applicable

Winston

2010 Census Population 19,198

EMS Agency

- LifeCare EMS

Level of Ground Service

- Advanced Life Support

Air Medical EMS Agency

- Not Applicable

EMS Responses..... 2,928

EMS Personnel

EMTs 9

Paramedics..... 5

EMS Operating Fund

Eligible \$11,653

Disbursed \$0

EMSOF Grant Recipient

Not Applicable

EMSOF Grant User(s)

Not Applicable

Yalobusha

2010 Census Population 12,678

EMS Agency

- Yalobusha County Hospital

Level of Ground Service

- Advanced Life Support

Air Medical EMS Agency

- Not Applicable

EMS Responses..... 2,087

EMS Personnel

EMTs 6

Paramedics..... 10

EMS Operating Fund

Eligible \$7,708

Disbursed \$7,708

EMSOF Grant Recipient

Yalobusha County

EMSOF Grant User(s)

Yalobusha County Hospital

Yazoo

2010 Census Population 28,065

EMS Agency

- Pafford EMS

Level of Ground Service

- Advanced Life Support

Air Medical EMS Agency

- Not Applicable

EMS Responses..... 4,430

EMS Personnel

EMTs 9

Paramedics..... 3

EMS Operating Fund

Eligible..... \$17,064

Disbursed \$17,064

EMSOF Grant Recipient

Yazoo County

EMSOF Grant User(s)

Yazoo County

Pafford EMS

