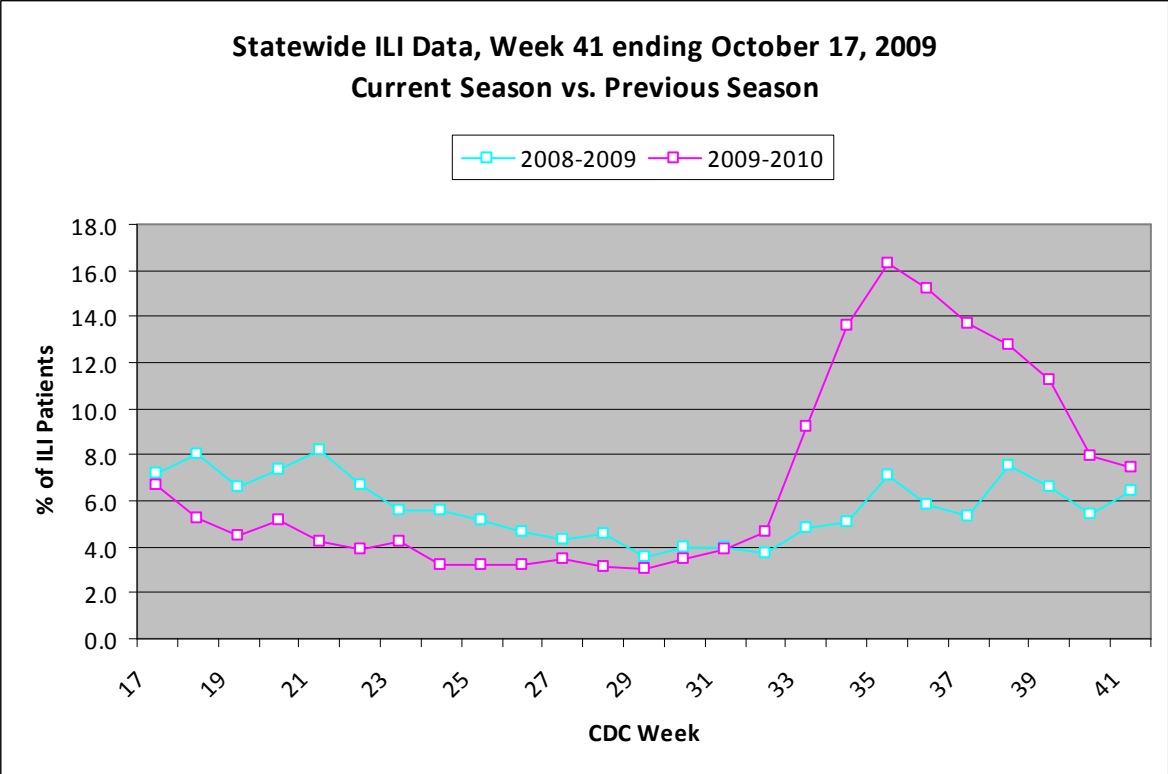
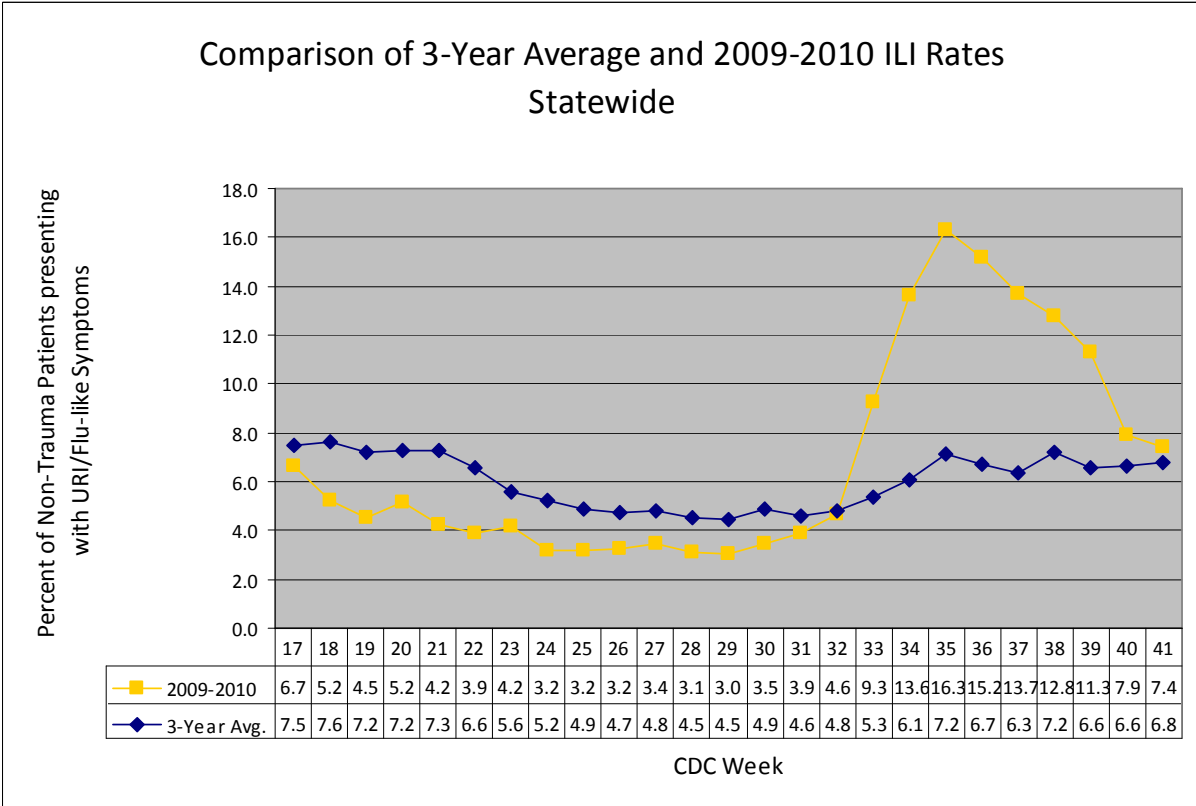


For week 41 (10/11/09- 10/17/09), the overall state ILI rate (7.4%) decreased slightly from last week (7.9%), but was still higher than this time last year (6.5%).



New for the 2009-10 season is a comparison of 2009-10 ILI rates to the three-year average for each district and the state. The 2009-10 ILI rate for most districts and the state continues to be above baseline, but is decreasing each week.



During week 41, four districts (3, 5, 8, and 9) had a decrease in ILI activity, and five districts (1, 2, 4, 6, and 7) had an increase.

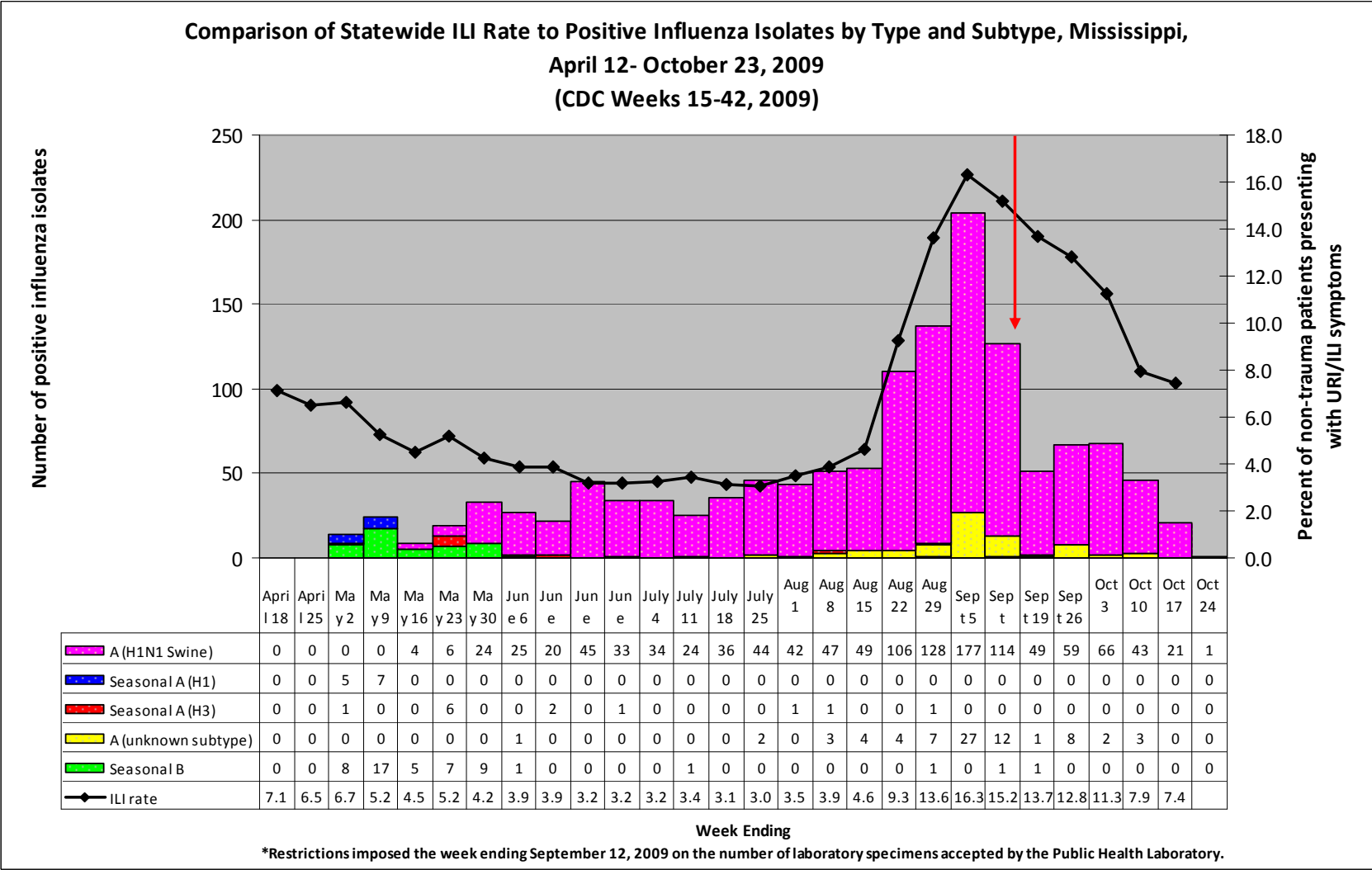
**\*\*\*To date, 2,505 flu specimens have been submitted for testing to the MSDH PHL since April 27<sup>th</sup>. 1,200 lab-confirmed novel H1N1 specimens have been reported to MSDH. This total includes 285 positives reported from outside labs. The positives were from the following counties:**

County	Total
<b>Total</b>	<b>1200</b>
Adams	7
Alcorn	7
Amite	0
Attala	5
Benton	1
Bolivar	11
Calhoun	16
Carroll	3
Chickasaw	11
Choctaw	6
Claiborne	1
Clarke	22
Clay	5
Coahoma	67
Copiah	8
Covington	10
DeSoto	68
Forrest	21
Franklin	3
George	6
Greene	4
Grenada	31
Hancock	14
Harrison	98
Hinds	58
Holmes	6
Humphreys	2
Issaquena	0
Itawamba	0
Jackson	87
Jasper	10
Jefferson	1
Jefferson Davis	2
Jones	15
Kemper	6
Lafayette	10
Lamar	20
Lauderdale	15
Lawrence	4

Leake	19
Lee	8
Leflore	6
Lincoln	10
Lowndes	12
Madison	47
Marion	45
Marshall	13
Monroe	17
Montgomery	8
Neshoba	17
Newton	6
Noxubee	3
Oktibbeha	24
Panola	35
Pearl River	8
Perry	2
Pike	11
Pontotoc	2
Prentiss	2
Quitman	11
Rankin	45
Scott	13
Sharkey	0
Simpson	2
Smith	5
Stone	2
Sunflower	4
Tallahatchie	3
Tate	26
Tippah	1
Tishomingo	2
Tunica	13
Union	4
Walthall	17
Warren	7
Washington	11
Wayne	1
Webster	8
Wilkinson	1
Winston	40

Yalobusha	9
Yazoo	14
Unknown	5

Below is a comparison of the state ILI rate to the number of positive influenza isolates since mid- April. Starting in late May and into October, the predominate flu type identified continues to be novel H1N1 (swine) flu.



Mississippi reported “widespread” (Outbreaks of influenza or increases in ILI cases and recent laboratory-confirmed influenza in at least half the regions of the state with recent laboratory evidence of influenza in the state) activity for week 41. For more information on flu activity nationwide, please refer to the CDC’s website at: <http://www.cdc.gov/flu/weekly/fluactivity.htm>.

**A Weekly Influenza Surveillance Report Prepared by the Influenza Division  
Weekly Influenza Activity Estimates Reported by State and Territorial Epidemiologists\***

**Week Ending October 17, 2009- Week 41**

