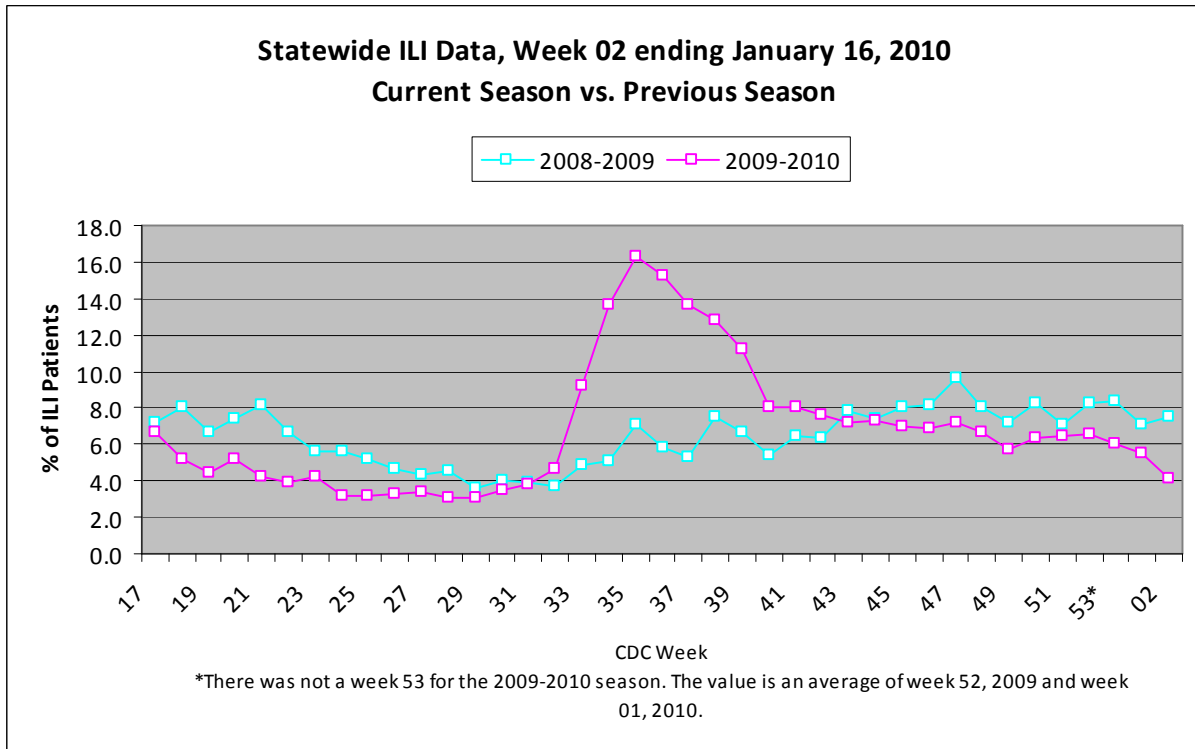
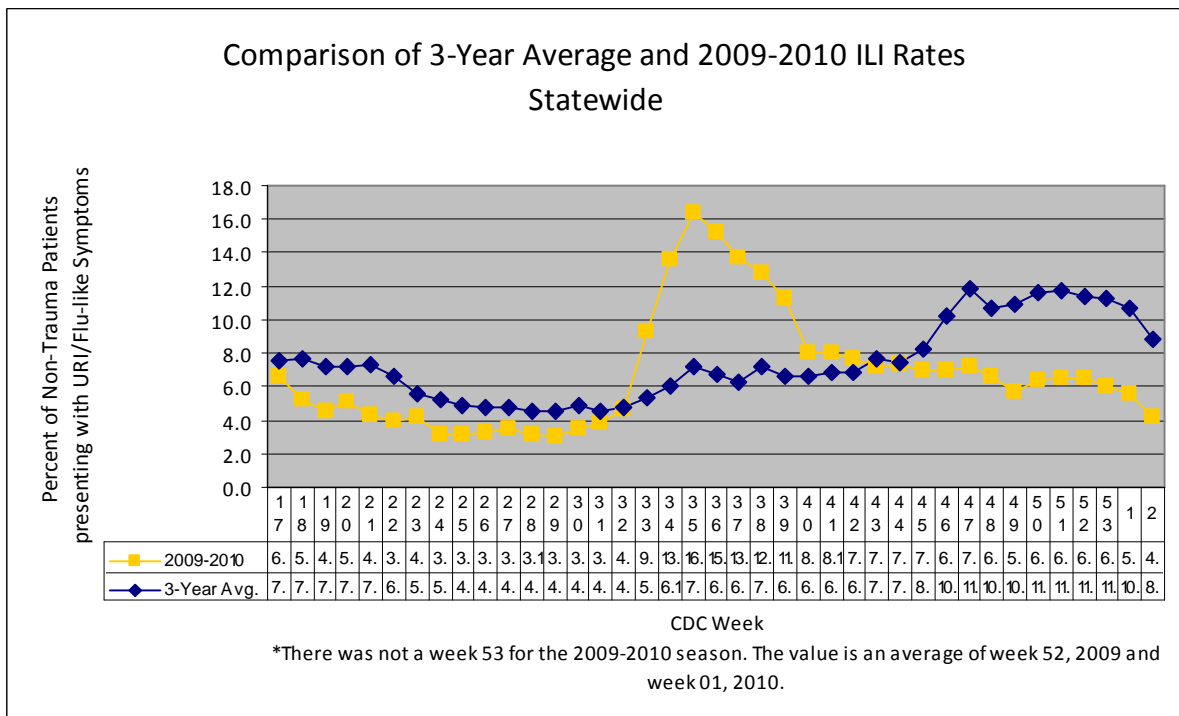


For week 02 (01/10/10- 01/16/10), the overall state ILI rate (4.2%) decreased from last week (5.5%) and was lower than this time last year (7.5%).



The 2009-10 state ILI rate was below baseline for week 02 and has been below baseline for the past ten weeks.



During week 02, five districts (4, 6, 7, 8, and 9) had a decrease in ILI activity, two districts (2 and 3) had an increase, and two remained about the same (1 and 5).

Since August 29<sup>th</sup>, 934 flu specimens have been submitted for testing to the MSDH PHL. 635 lab-confirmed novel H1N1 specimens have been reported to MSDH. This total includes 229 positives reported from outside labs. There have been a total of 21 reported flu deaths since **August 29<sup>th</sup>**, 12 that were confirmed H1N1. The positive cases and deaths were from the following counties:

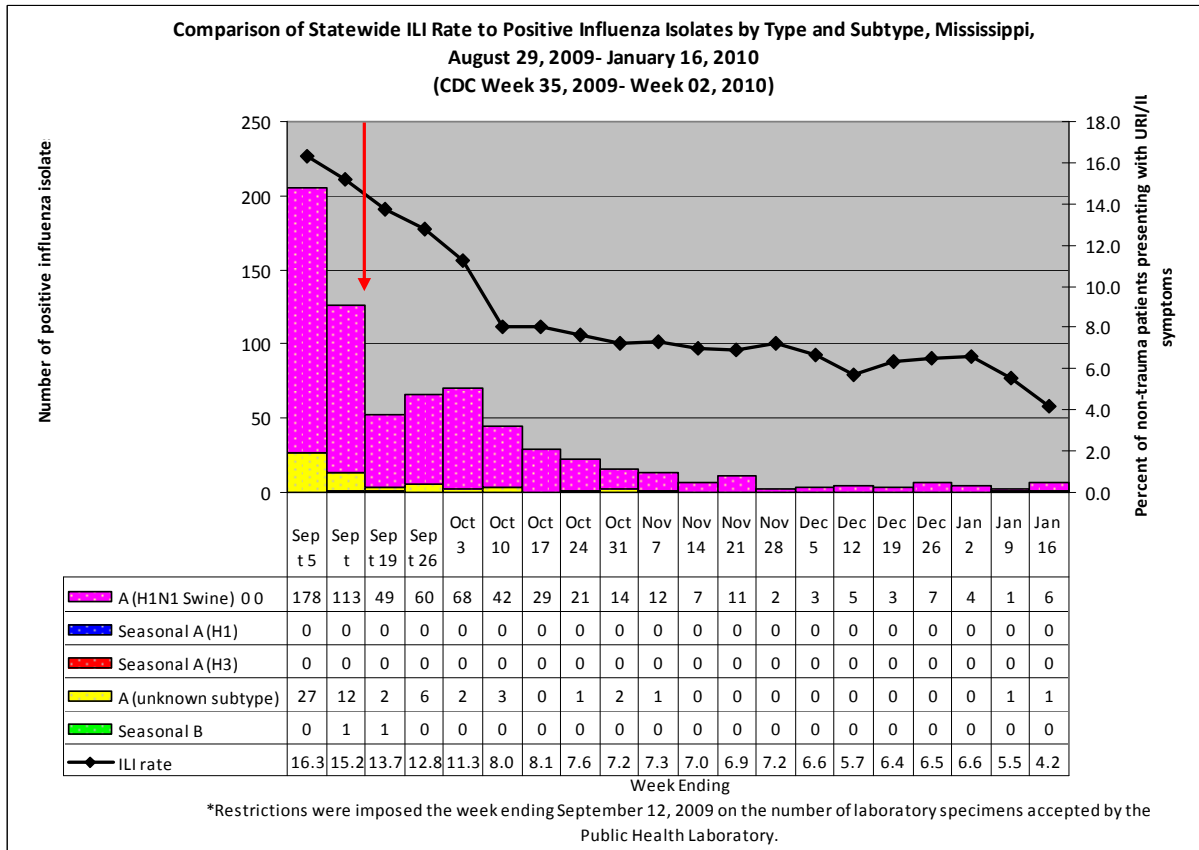
|              | H1N1 Swine | All Flu Deaths | H1N1 Death | Other Flu Deaths |
|--------------|------------|----------------|------------|------------------|
| <b>Total</b> | <b>635</b> | <b>21</b>      | <b>12</b>  | <b>9</b>         |
| Adams        | 2          | 0              | 0          | 0                |
| Alcorn       | 4          | 1              | 0          | 1                |
| Amite        | 0          | 0              | 0          | 0                |
| Attala       | 4          | 0              | 0          | 0                |
| Benton       | 1          | 0              | 0          | 0                |
| Bolivar      | 7          | 0              | 0          | 0                |
| Calhoun      | 3          | 0              | 0          | 0                |
| Carroll      | 3          | 0              | 0          | 0                |
| Chickasaw    | 4          | 0              | 0          | 0                |
| Choctaw      | 1          | 0              | 0          | 0                |
| Claiborne    | 1          | 0              | 0          | 0                |
| Clarke       | 4          | 0              | 0          | 0                |
| Clay         | 3          | 0              | 0          | 0                |
| Coahoma      | 65         | 0              | 0          | 0                |
| Copiah       | 1          | 0              | 0          | 0                |
| Covington    | 1          | 1              | 1          | 0                |
| DeSoto       | 33         | 0              | 0          | 0                |
| Forrest      | 2          | 0              | 0          | 0                |
| Franklin     | 0          | 0              | 0          | 0                |
| George       | 0          | 0              | 0          | 0                |
| Greene       | 0          | 0              | 0          | 0                |
| Grenada      | 24         | 0              | 0          | 0                |
| Hancock      | 4          | 1              | 1          | 0                |
| Harrison     | 28         | 0              | 0          | 0                |
| Hinds        | 43         | 1              | 0          | 1                |
| Holmes       | 11         | 0              | 0          | 0                |
| Humphreys    | 1          | 0              | 0          | 0                |
| Issaquena    | 0          | 0              | 0          | 0                |
| Itawamba     | 0          | 0              | 0          | 0                |

|                 |    |   |   |   |
|-----------------|----|---|---|---|
| Jackson         | 63 | 2 | 0 | 2 |
| Jasper          | 0  | 0 | 0 | 0 |
| Jefferson       | 1  | 0 | 0 | 0 |
| Jefferson Davis | 1  | 0 | 0 | 0 |
| Jones           | 10 | 4 | 3 | 1 |
| Kemper          | 4  | 0 | 0 | 0 |
| Lafayette       | 5  | 0 | 0 | 0 |
| Lamar           | 2  | 0 | 0 | 0 |
| Lauderdale      | 8  | 0 | 0 | 0 |
| Lawrence        | 2  | 0 | 0 | 0 |
| Leake           | 8  | 0 | 0 | 0 |
| Lee             | 1  | 0 | 0 | 0 |
| Leflore         | 3  | 0 | 0 | 0 |
| Lincoln         | 2  | 0 | 0 | 0 |
| Lowndes         | 5  | 0 | 0 | 0 |
| Madison         | 27 | 0 | 0 | 0 |
| Marion          | 36 | 1 | 1 | 0 |
| Marshall        | 9  | 0 | 0 | 0 |
| Monroe          | 1  | 0 | 0 | 0 |
| Montgomery      | 8  | 0 | 0 | 0 |
| Neshoba         | 7  | 0 | 0 | 0 |
| Newton          | 2  | 0 | 0 | 0 |
| Noxubee         | 2  | 0 | 0 | 0 |
| Oktibbeha       | 8  | 0 | 0 | 0 |
| Panola          | 17 | 0 | 0 | 0 |
| Pearl River     | 4  | 1 | 0 | 1 |
| Perry           | 0  | 0 | 0 | 0 |
| Pike            | 7  | 1 | 1 | 0 |
| Pontotoc        | 0  | 0 | 0 | 0 |
| Prentiss        | 2  | 0 | 0 | 0 |
| Quitman         | 3  | 0 | 0 | 0 |
| Rankin          | 30 | 0 | 0 | 0 |
| Scott           | 8  | 0 | 0 | 0 |
| Sharkey         | 0  | 0 | 0 | 0 |
| Simpson         | 1  | 1 | 0 | 1 |
| Smith           | 0  | 0 | 0 | 0 |
| Stone           | 2  | 1 | 1 | 0 |
| Sunflower       | 1  | 0 | 0 | 0 |
| Tallahatchie    | 3  | 0 | 0 | 0 |
| Tate            | 25 | 2 | 1 | 1 |
| Tippah          | 1  | 1 | 1 | 0 |

|            |    |   |   |   |
|------------|----|---|---|---|
| Tishomingo | 0  | 0 | 0 | 0 |
| Tunica     | 16 | 0 | 0 | 0 |
| Union      | 2  | 0 | 0 | 0 |
| Walthall   | 6  | 0 | 0 | 0 |
| Warren     | 3  | 0 | 0 | 0 |
| Washington | 7  | 2 | 1 | 1 |
| Wayne      | 2  | 0 | 0 | 0 |
| Webster    | 4  | 1 | 1 | 0 |
| Wilkinson  | 0  | 0 | 0 | 0 |
| Winston    | 4  | 0 | 0 | 0 |
| Yalobusha  | 6  | 0 | 0 | 0 |
| Yazoo      | 12 | 0 | 0 | 0 |
| Unknown    | 4  | 0 | 0 | 0 |

\*Other flu types include any flu case not confirmed as H1N1 swine flu.

Below is a comparison of the state ILI rate to the number of positive influenza isolates since August 29<sup>th</sup>. The predominant flu type identified continues to be novel H1N1 (swine) flu.



Mississippi reported “local” (Outbreaks of influenza or increases in ILI cases and recent laboratory-confirmed influenza in a single region of the state) activity for week 01. For more

information on flu activity nationwide, please refer to the CDC's website at: <http://www.cdc.gov/flu/weekly/fluactivity.htm>.

