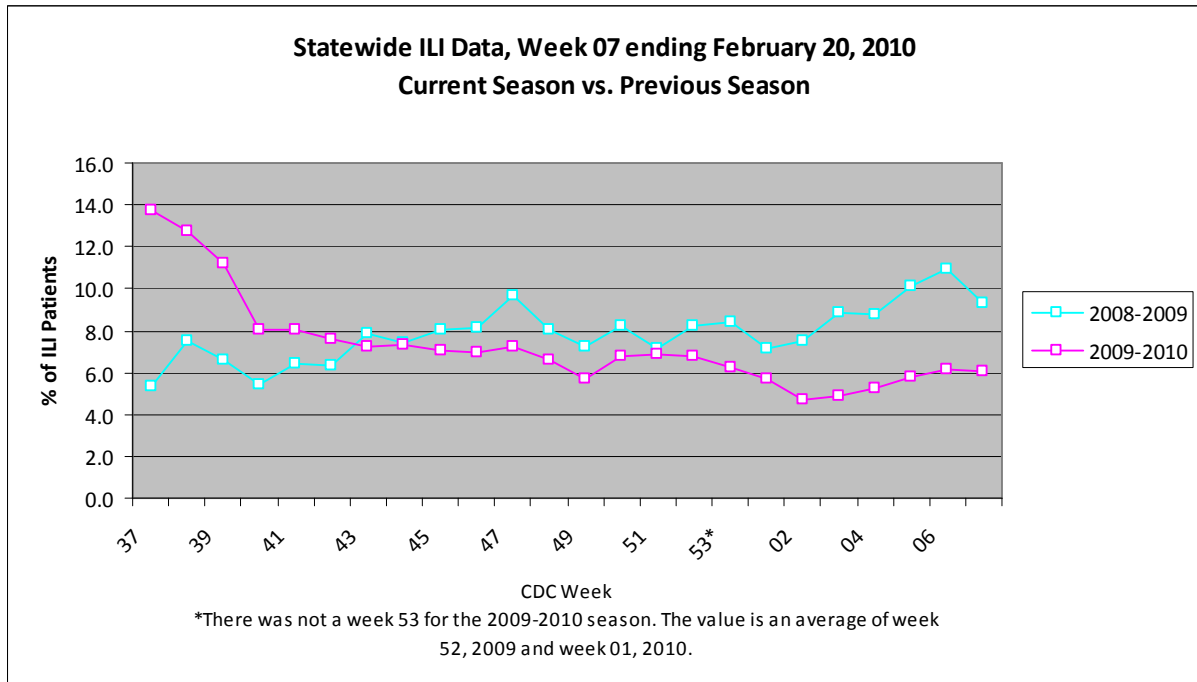
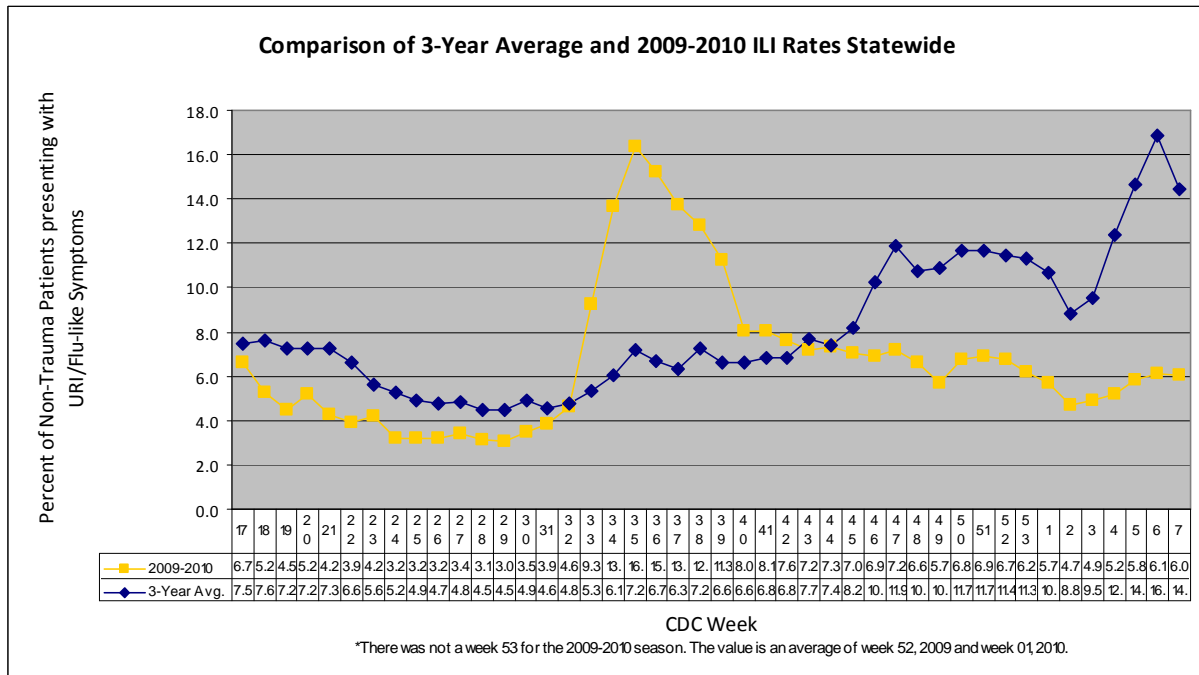


For week 07 (02/14/10- 02/20/10), the overall state ILI rate (6.0%) was comparable to last week (6.1%), but was lower than this time last year (9.4%).



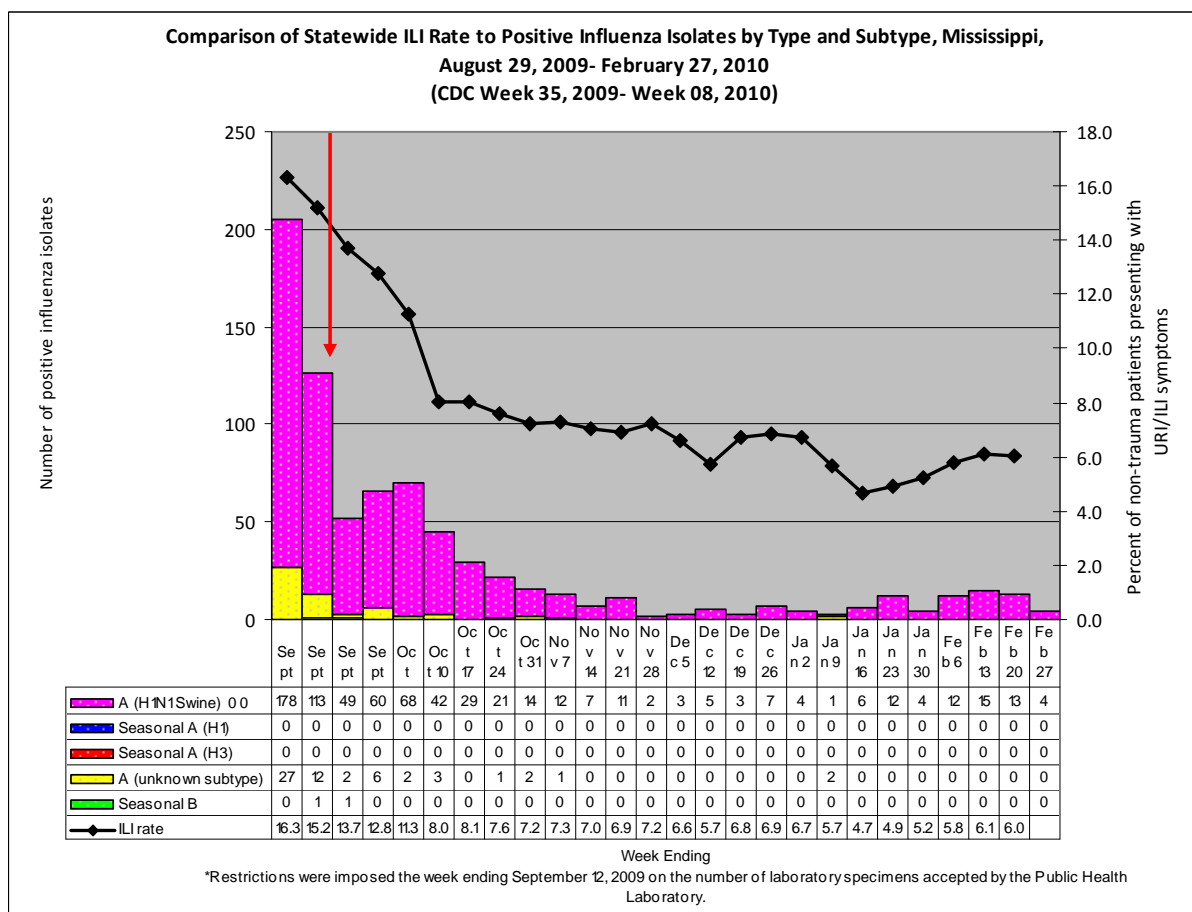
The 2009-10 state ILI rate was below baseline for week 07 and has been below baseline for the past four months.



During week 07, two districts (7 and 9) had a decrease in ILI activity, four districts (1, 2, 6 and 8) had an increase, and two remained about the same (4 and 5). For the past three weeks, districts 1 and 8 ILI rates have been steadily increasing, but are still below baseline. District 6 ILI rate has also been on an increase over the past two weeks.

Since August 29th, there have been a total of 25 reported flu deaths, 13 that were confirmed H1N1. The most recent flu death occurred in Grenada County in mid-February.

Below is a comparison of the state ILI rate to the number of positive influenza isolates since August 29th. The predominant flu type identified continues to be novel H1N1 (swine) flu.



Mississippi reported “**local**” (Outbreaks of influenza or increases in ILI cases and recent laboratory-confirmed influenza in a single region of the state) activity for week **07**. For more information on flu activity nationwide, please refer to the CDC’s website at: <http://www.cdc.gov/flu/weekly/fluactivity.htm>.

