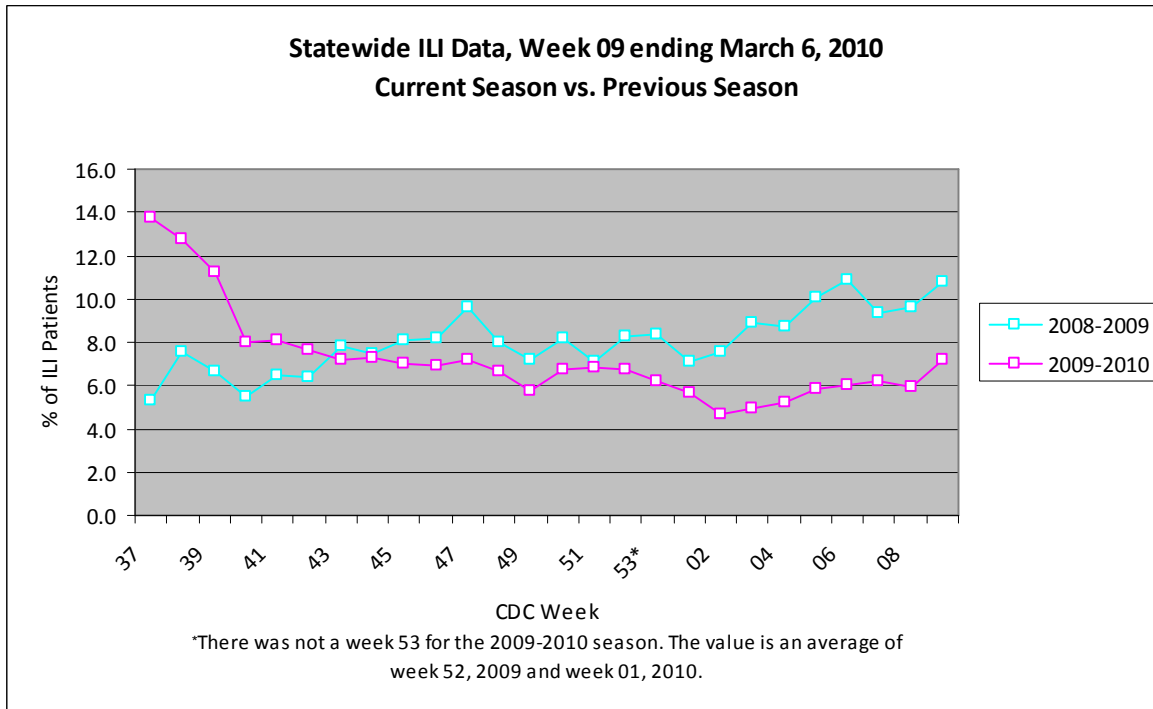
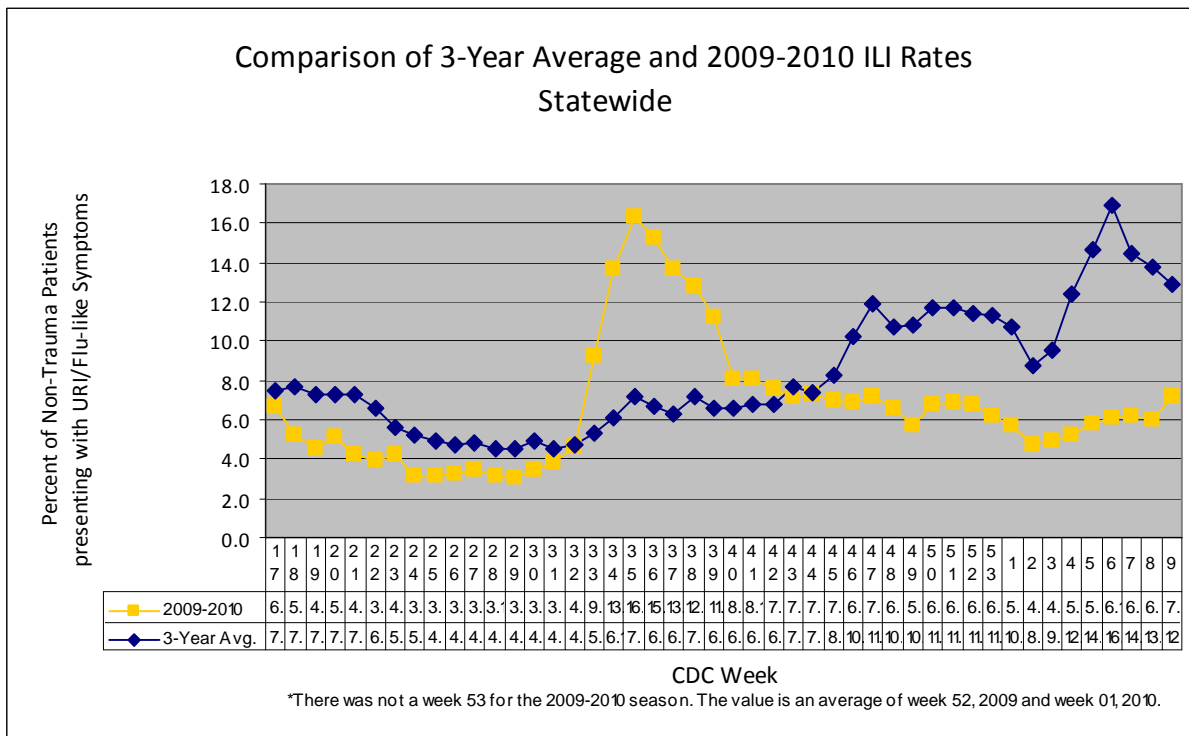


For week 09 (02/28/10- 03/06/10), the overall state ILI rate (7.2%) increased from last week (6.0%), but was lower than this time last year (10.8%).



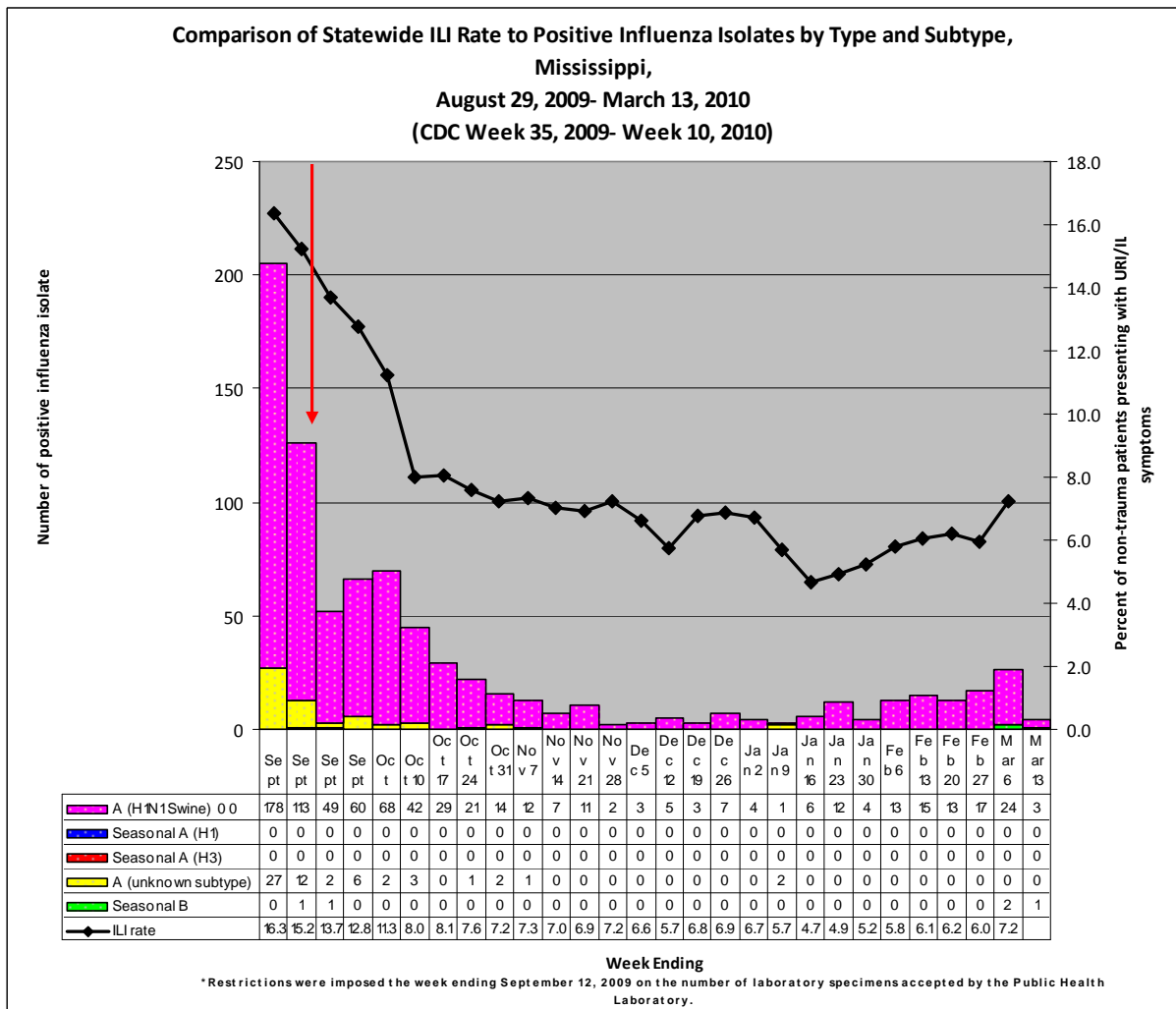
The 2009-10 state ILI rate was below baseline for week 09 and has been below baseline for the past four months.



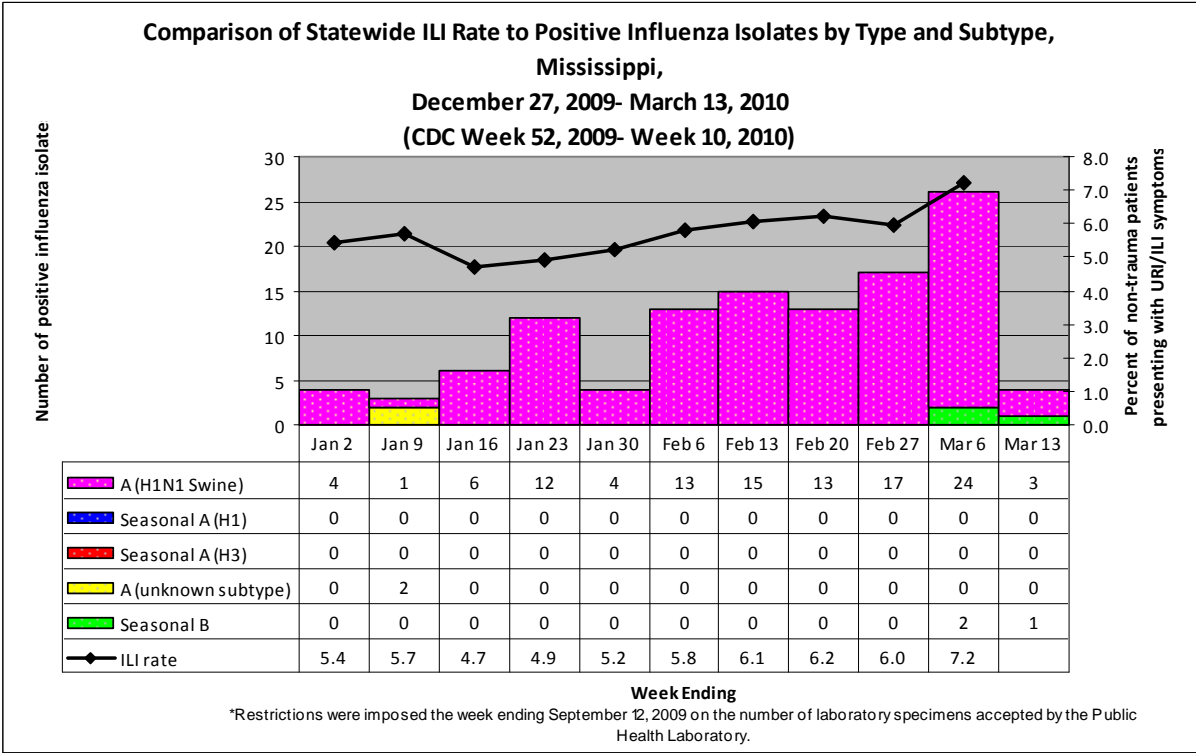
During week 09, one district (6) had a decrease in ILI activity, four districts (1, 3, 4, and 8) had an increase, and four remained about the same (2, 5, 7, and 9).

Since August 29th, there have been a total of 25 reported flu deaths, 13 that were confirmed H1N1. The most recent flu death occurred in Grenada County in mid-February.

Below is a comparison of the state ILI rate to the number of positive influenza isolates since August 29th. The predominant flu type identified continues to be novel H1N1 (swine) flu.



The inset graph below shows the latest Flu B's that were identified by the MSDH PHL. All three Flu B's were from District 5 (Hinds County) and had an onset of symptoms in the past two weeks. The last Flu B that was identified by the MSDH PHL prior to these three was in September 2009.



Mississippi reported “**regional**” (Outbreaks of influenza or increases in ILI and recent laboratory confirmed influenza in at least two but less than half the regions of the state with recent laboratory evidence of influenza in those regions) activity for week 09. For more information on flu activity nationwide, please refer to the CDC’s website at: <http://www.cdc.gov/flu/weekly/fluactivity.htm>.

