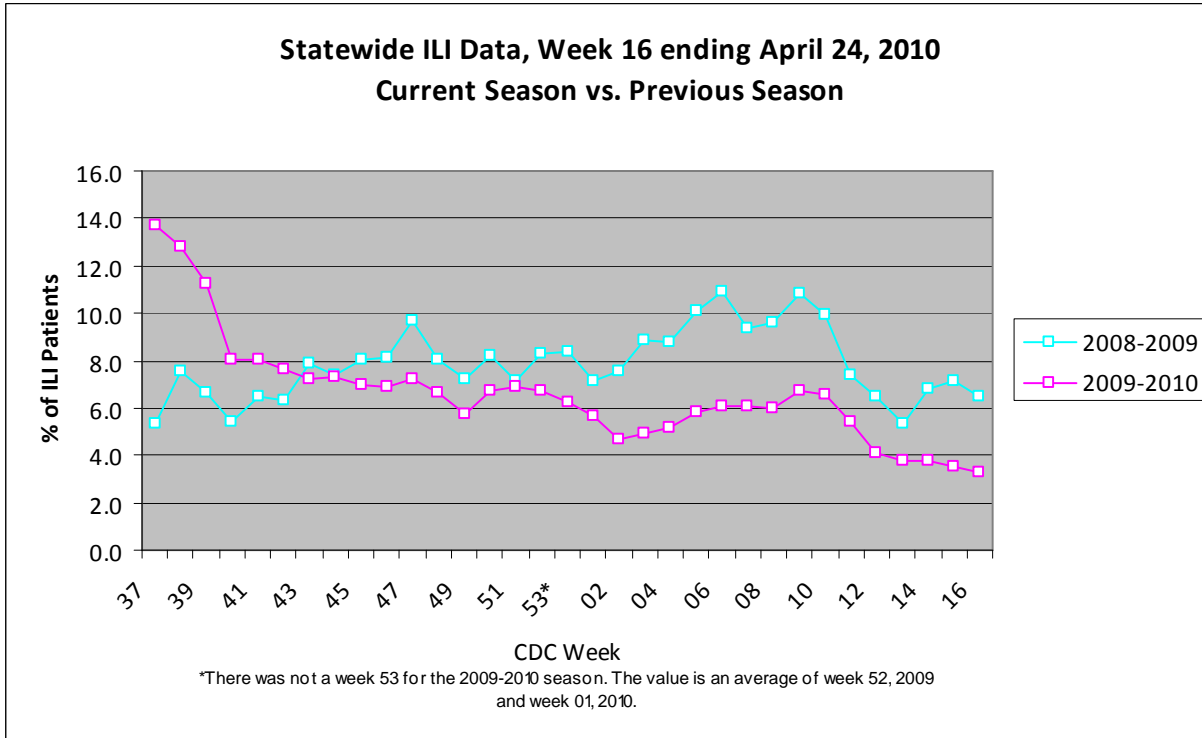
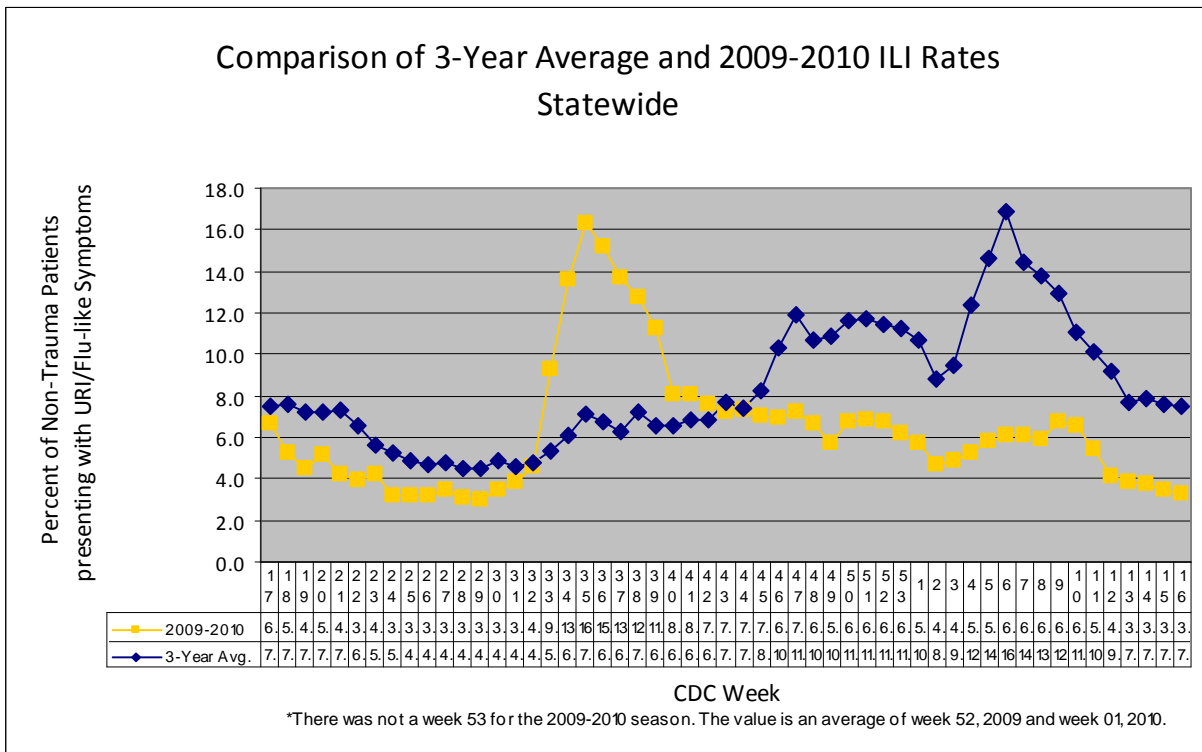


For week 16 (04/18/10- 04/24/10), the overall state ILI rate (3.3%) was comparable to last week (3.5%), but lower than this time last year (6.5%).



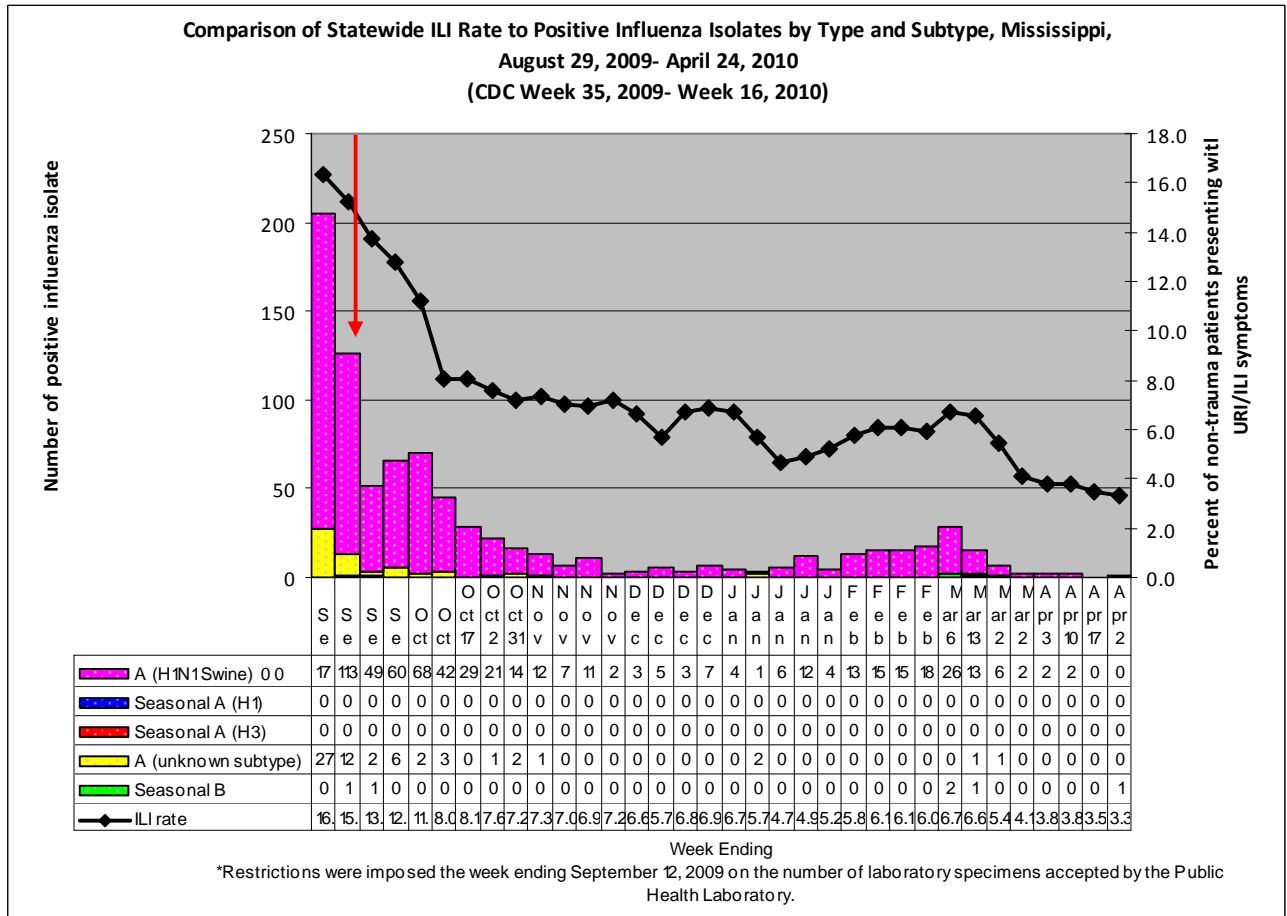
The 2009-10 state ILI rate was below baseline for week 16 and has been below baseline for the past six months.



During week 16, two districts (6 and 8) had a decrease in ILI activity, one district (2) had an increase, and six remained about the same (1, 3, 4, 5, 7, and 9).

Since August 29th, there have been a total of 27 reported flu deaths, 14 that were confirmed H1N1. The most recent reported flu death occurred in Lincoln County in mid-March.

Below is a comparison of the state ILI rate to the number of positive influenza isolates since August 29th. The predominant flu type identified continues to be novel H1N1 (swine) flu.



The inset graph below shows the latest Flu B that was identified by the MSDH PHL. The Flu B was from District 3 (Attala County) and had an onset of symptoms in mid-April.

