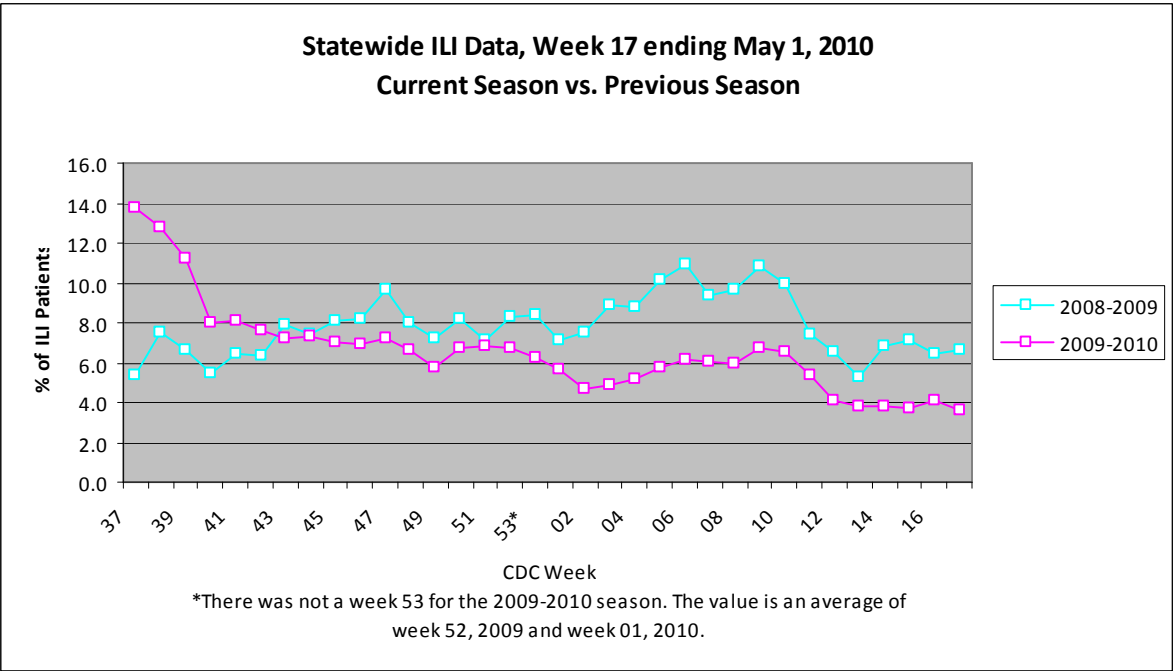
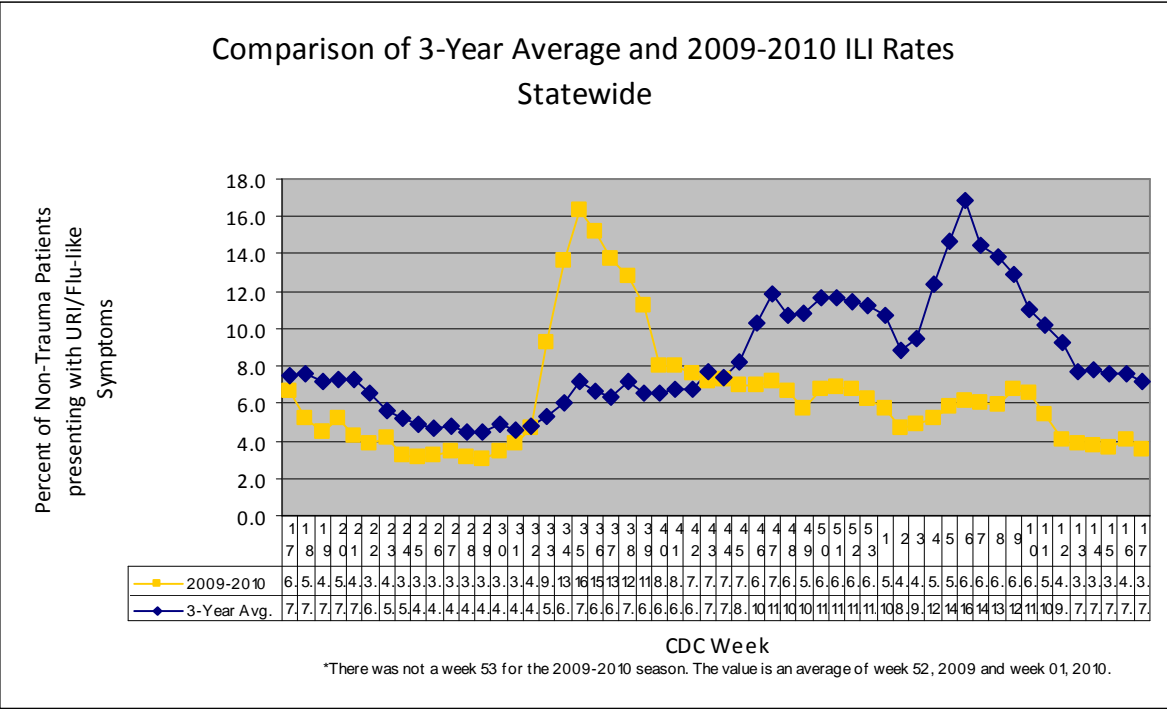


For week 17 (04/25/10- 05/01/10), the overall state ILI rate (3.6%) decreased slightly from last week (4.1%) and was lower than this time last year (6.7%).



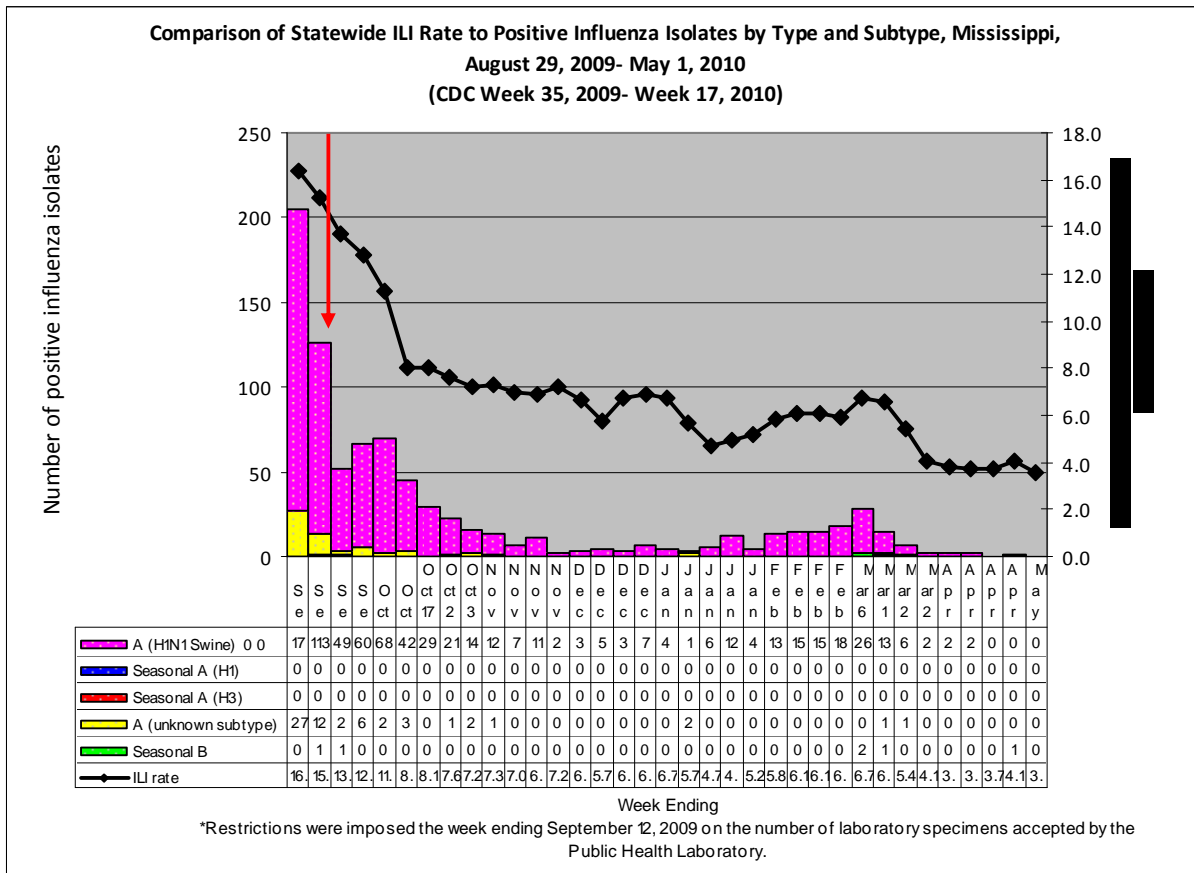
The 2009-10 state ILI rate was below baseline for week 17 and has been below baseline for the past six months.



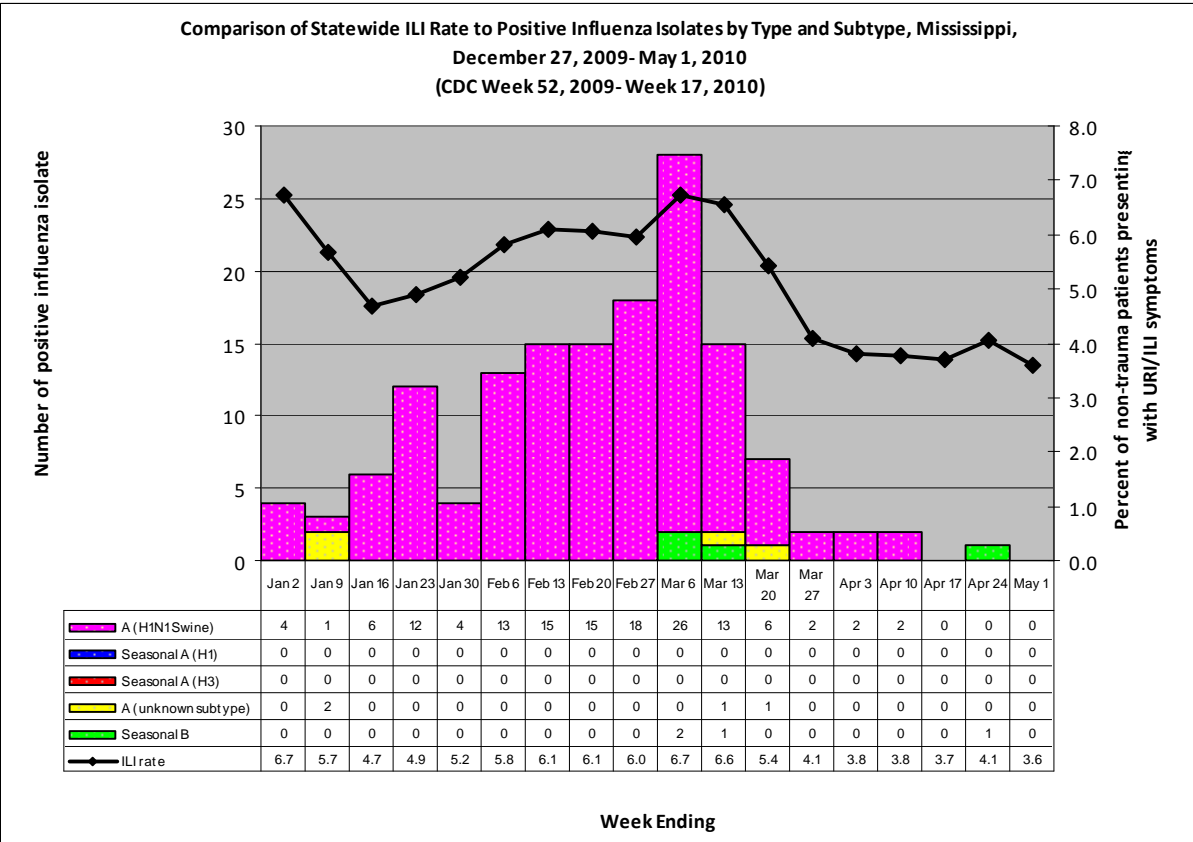
During week 17, one district (9) had a decrease in ILI activity, five districts (1, 4, 5, 6, and 8) had a slight increase, and three remained about the same (2, 3, and 7).

Since August 29th, there have been a total of 27 reported flu deaths, 14 that were confirmed H1N1. The most recent reported flu death occurred in Lincoln County in mid-March.

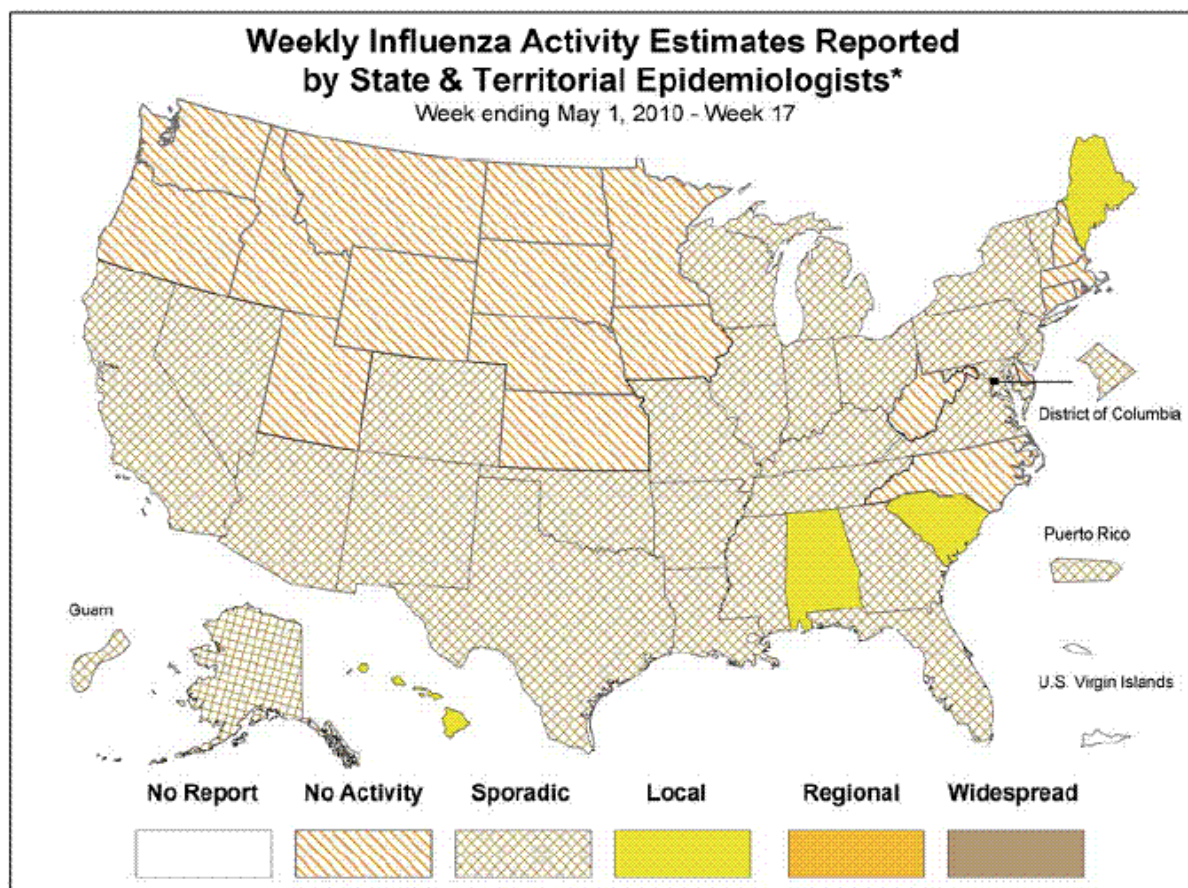
Below is a comparison of the state ILI rate to the number of positive influenza isolates since August 29th. The last positive flu specimen that was reported out by the MSDH PHL was in late-April.



The inset graph below shows the last positive Flu specimen that was identified by the MSDH PHL. The Flu B was from District 3 (Attala County) and had an onset of symptoms in mid-April.



Mississippi reported “sporadic” (Small numbers of laboratory-confirmed influenza cases or a single laboratory-confirmed influenza outbreak has been reported, but there is no increase in cases of ILI) activity for week 17. For more information on flu activity nationwide, please refer to the CDC’s website at: <http://www.cdc.gov/flu/weekly/fluactivity.htm>.



* This map indicates geographic spread & does not measure the severity of influenza activity