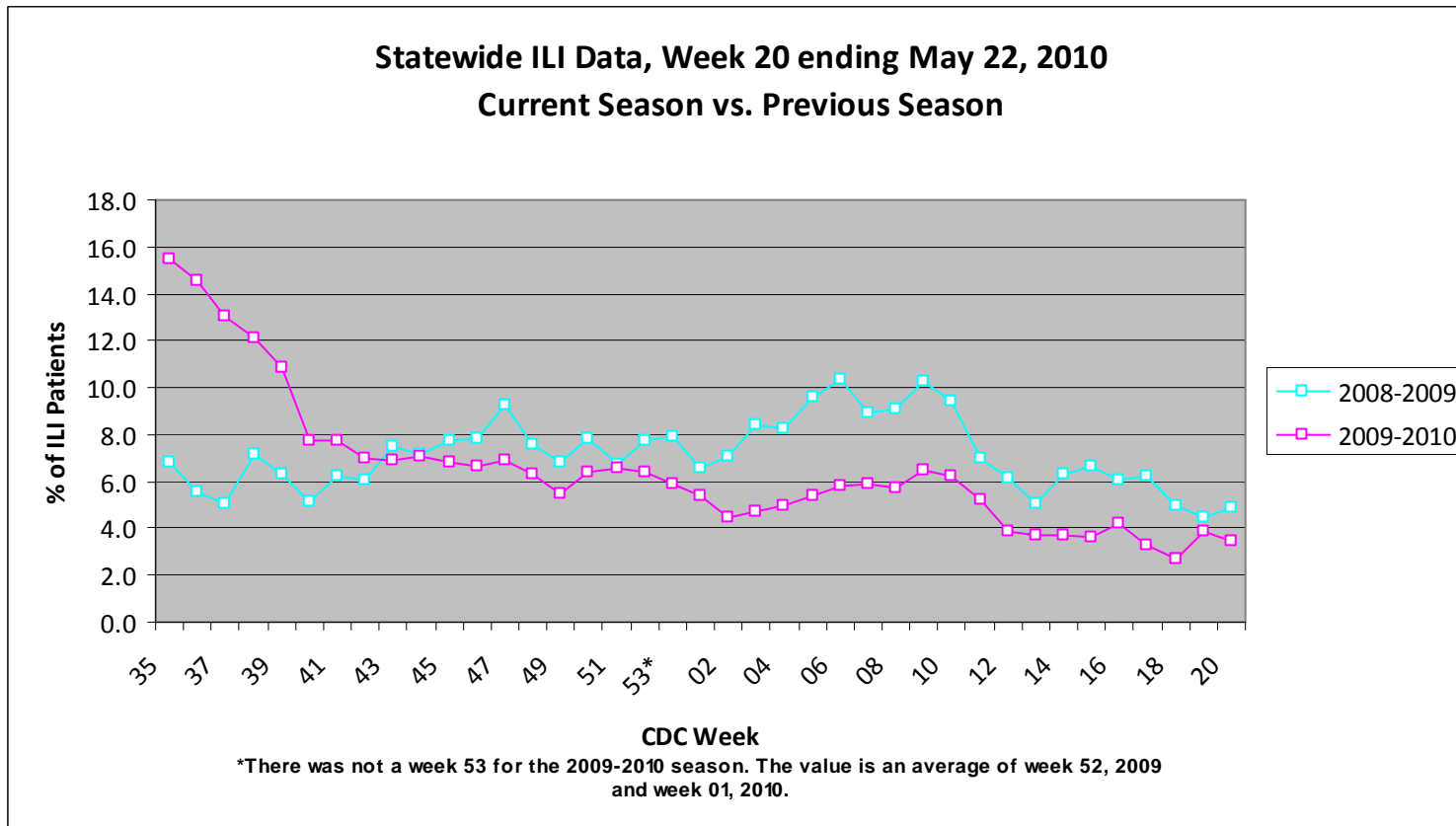
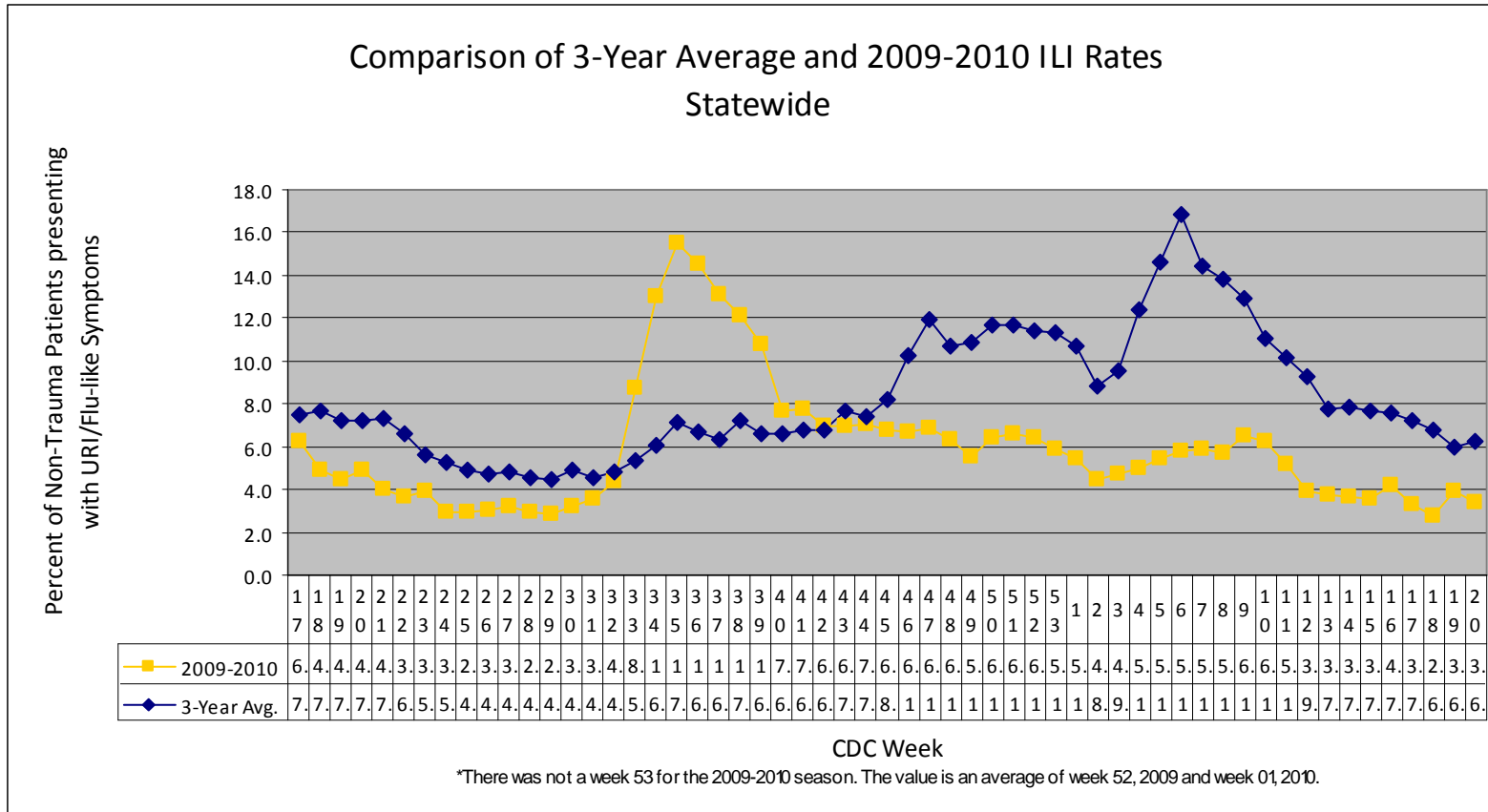


The official CDC reporting period for the 2009-2010 influenza season ended the week of May 22, 2010. In mid-August 2009, ILI activity began to increase, reaching a peak in the week of August 30-September 5, 2009 with a rate of 15.5%. This peak was much earlier than previous influenza seasons, which traditionally peak in late December through mid-February. Mississippi reported “widespread” geographic occurrence of influenza from August 30- October 24th. ILI activity dropped below baseline in late October and continued to be below baseline until the end of the flu season.

For week 20 (05/16/10- 05/22/10), the overall state ILI rate (3.4%) decreased slightly from week 19 (3.9%) and was lower than this time last year (4.9%).



The 2009-10 state ILI rate was below baseline for week 20 and has been below baseline since week 43 (ending October 31st).

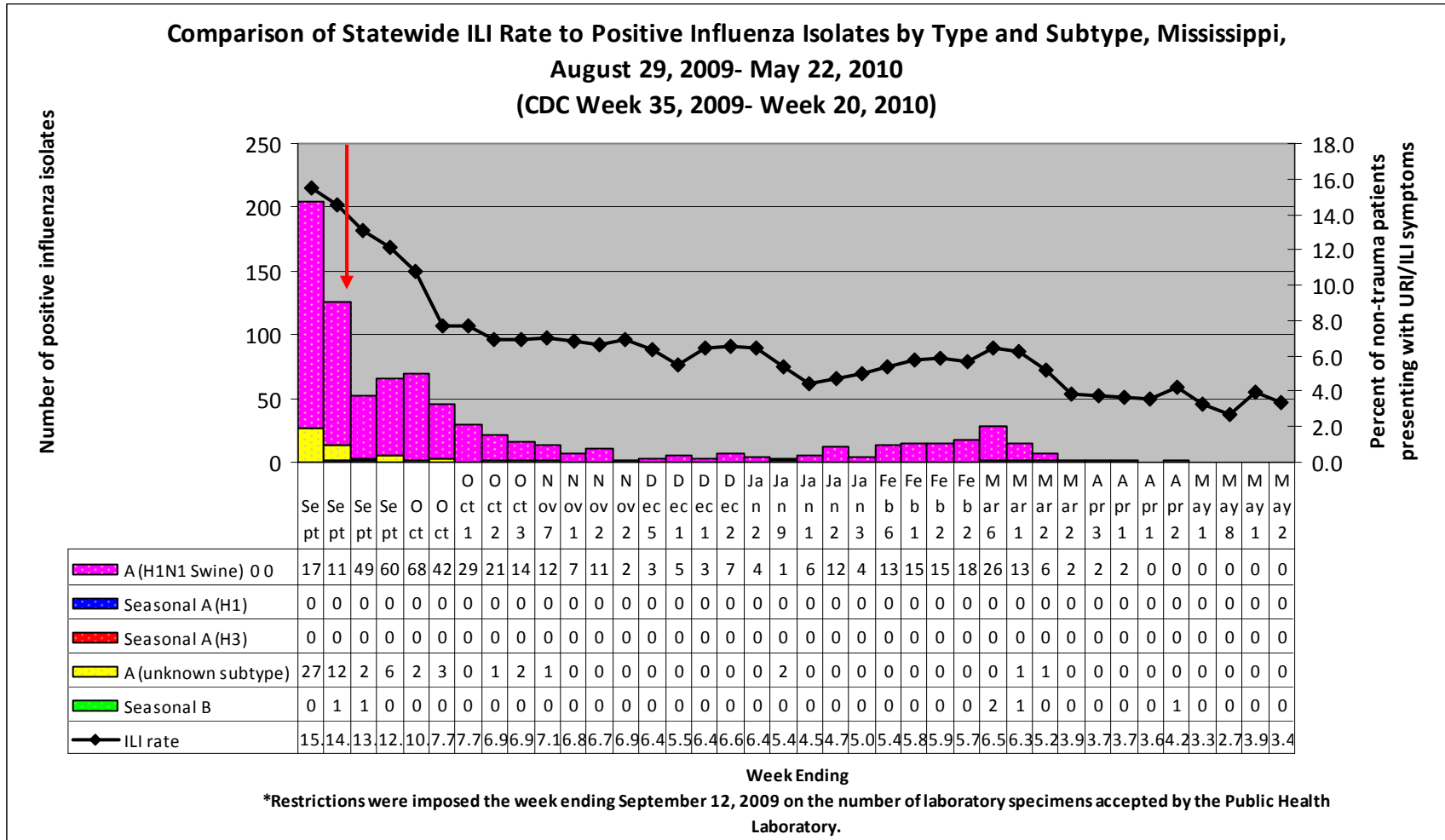


During week 20, one district (5) had a slight increase in ILI activity, five districts had a decrease (2, 4, 6, 7, and 8), and three remained about the same (1, 3, and 9).

During the 2009-2010 influenza season, there were 27 flu-related deaths reported to MSDH. Fourteen (52%) were 2009 H1N1 influenza A infections confirmed by PCR. The remainder of the deaths were associated with influenza A infections that were not subtyped; seven (26%) were influenza A by rapid antigen tests, three (11%) were influenza A by viral culture, and three (11%) were unsubtypeable influenza A by PCR. Four (15%) of the 27 deaths were pediatric deaths (in children less than 18 years of age). The

deaths ranged in age from 13 days to 77 years, with a median age of 52.14 that were confirmed H1N1. The last reported flu death occurred in Lincoln County in mid-March.

Below is a comparison of the state ILI rate to the number of positive influenza isolates since August 29th. Eighty-nine percent (524/589) of positive influenza samples in the Public Health Laboratory (PHL) during the 2009-2010 season were 2009 H1N1. The last positive sample for the season was an influenza B on April 20, 2010.



Mississippi reported “no activity” (No laboratory-confirmed cases of influenza and no reported increase in the number of cases of ILI) activity for week 20. For more information on flu activity nationwide, please refer to the CDC’s website at: <http://www.cdc.gov/flu/weekly/fluactivity.htm>.

**A Weekly Influenza Surveillance Report Prepared by the Influenza Division
Weekly Influenza Activity Estimates Reported by State and Territorial Epidemiologists***

Week Ending May 22, 2010- Week 20

