



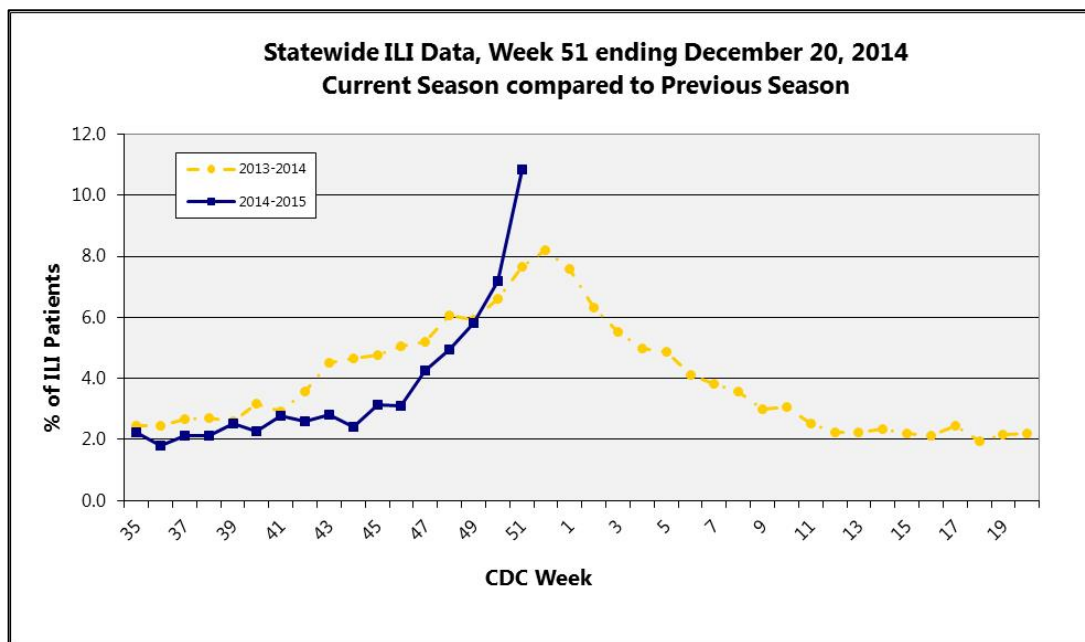
## 2014-2015 Influenza Report Week 51

December 14 – December 20, 2014

### About our flu activity reporting

MSDH relies upon selected sentinel health practitioners across the state to report the percentage of total patient visits consistent with an influenza-like illness (ILI: fever of 100°F or higher AND cough and/or sore throat). Also, providers are supplied with specimen collection kits. Samples are submitted to the Mississippi Public Health Laboratory for influenza PCR testing. Reports are used to estimate the state's ILI rate and the magnitude of the state's influenza activity. Reports represent only the distribution of flu in the state, not an actual count of all flu cases statewide. **Information is provisional only and may change depending on additional reporting from sentinel providers.**

### State ILI Surveillance



During week **51** (12/14/14-12/20/14), the overall state ILI rate (**10.8%**) **increased** from the previous week (**7.2%**), and was higher than this time last year (**7.7%**).

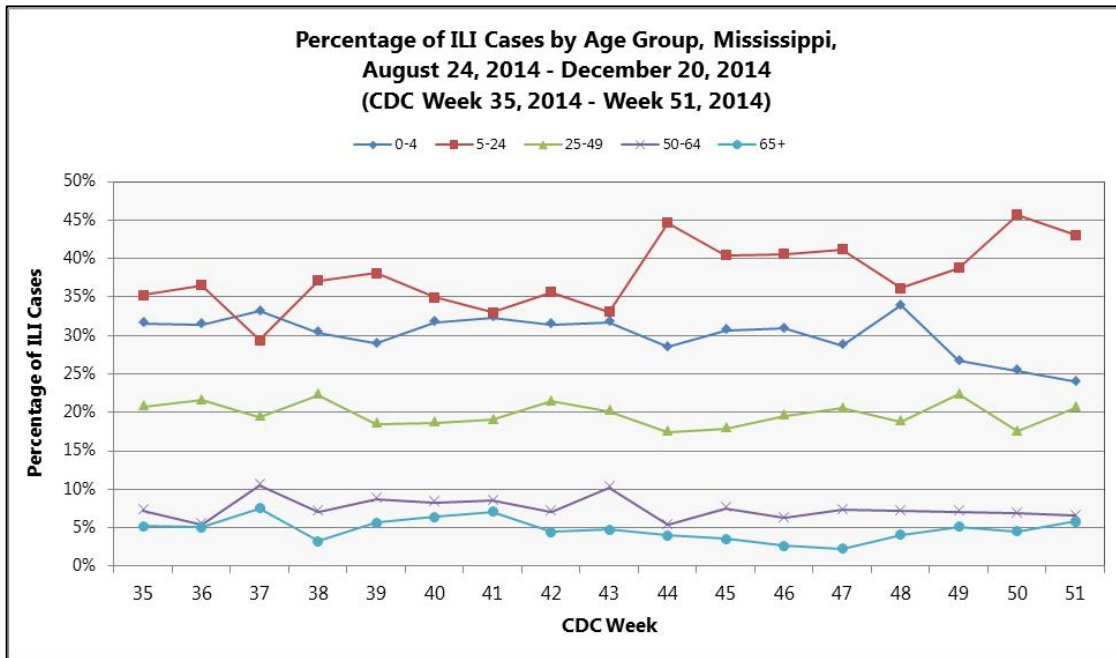
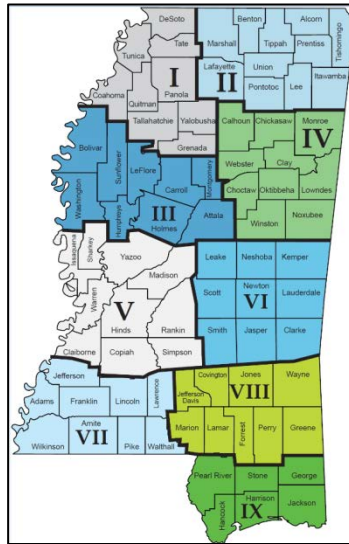
| [Figure 1](#)

Total number of patients treated by sentinel providers in the last three weeks. | **Table 1**

2014-2015 Influenza Season				
CDC Week	Week Ending	Total patients	ILI symptoms	ILI Rate (%)
<b>51</b>	<b>Dec. 20</b>	<b>19647</b>	<b>2129</b>	<b>10.8%</b>
50	Dec. 13	21287	1532	7.2%
49	Dec. 06	22496	1312	5.8%

During week **51**, **all** districts had an increase in ILI activity. Information is provisional only and may change depending on additional reporting from sentinel providers. | **Table 2**

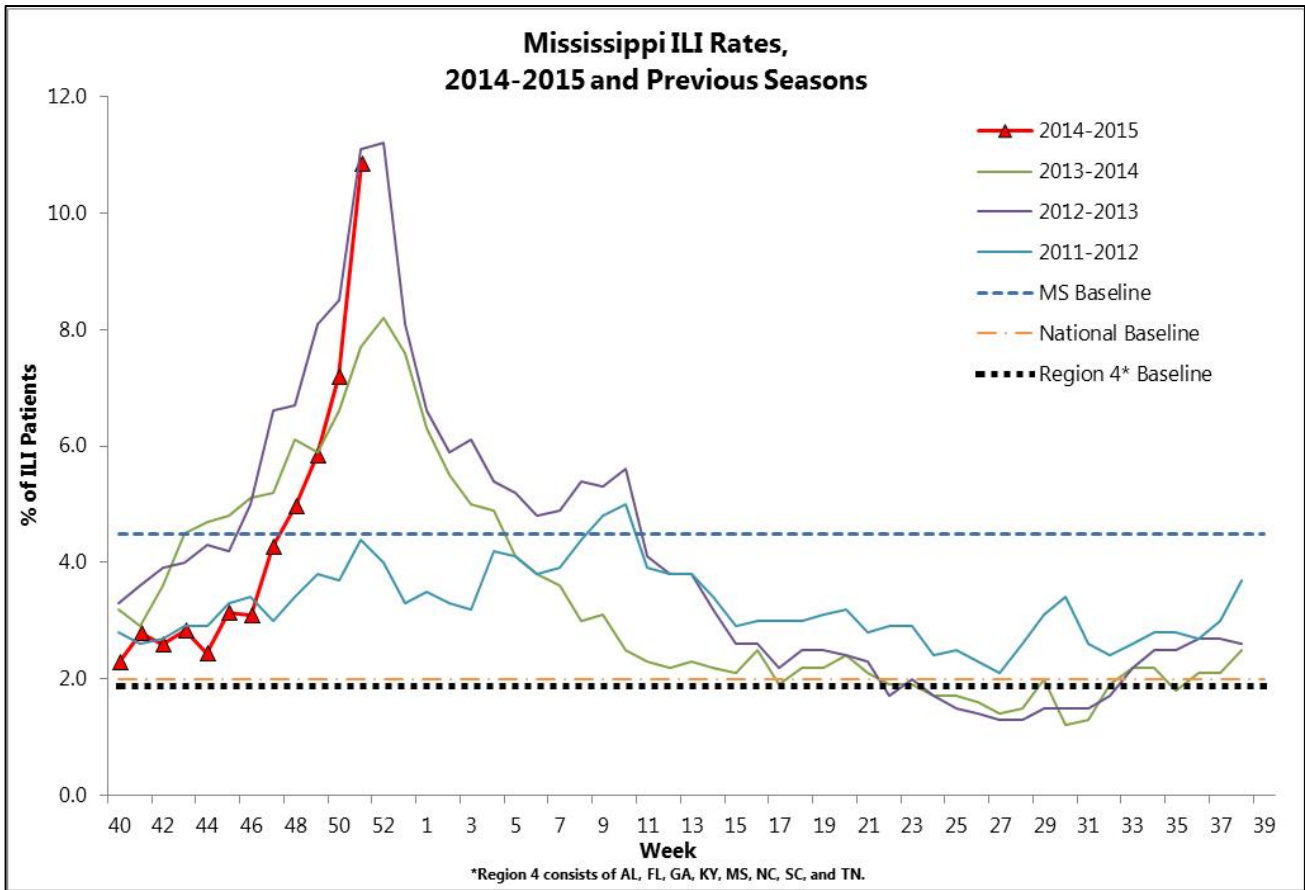
MSDH District ILI Rates (%) 2014-2015		
District	Week 50	Week 51
State	7.2	10.8
I	3.6	9.5
II	8.6	14.6
III	6.8	11.1
IV	7.2	9.1
V	5.3	9.6
VI	13.9	16.5
VII	8.9	11.7
VIII	5.5	11.1
IX	8.4	10.9



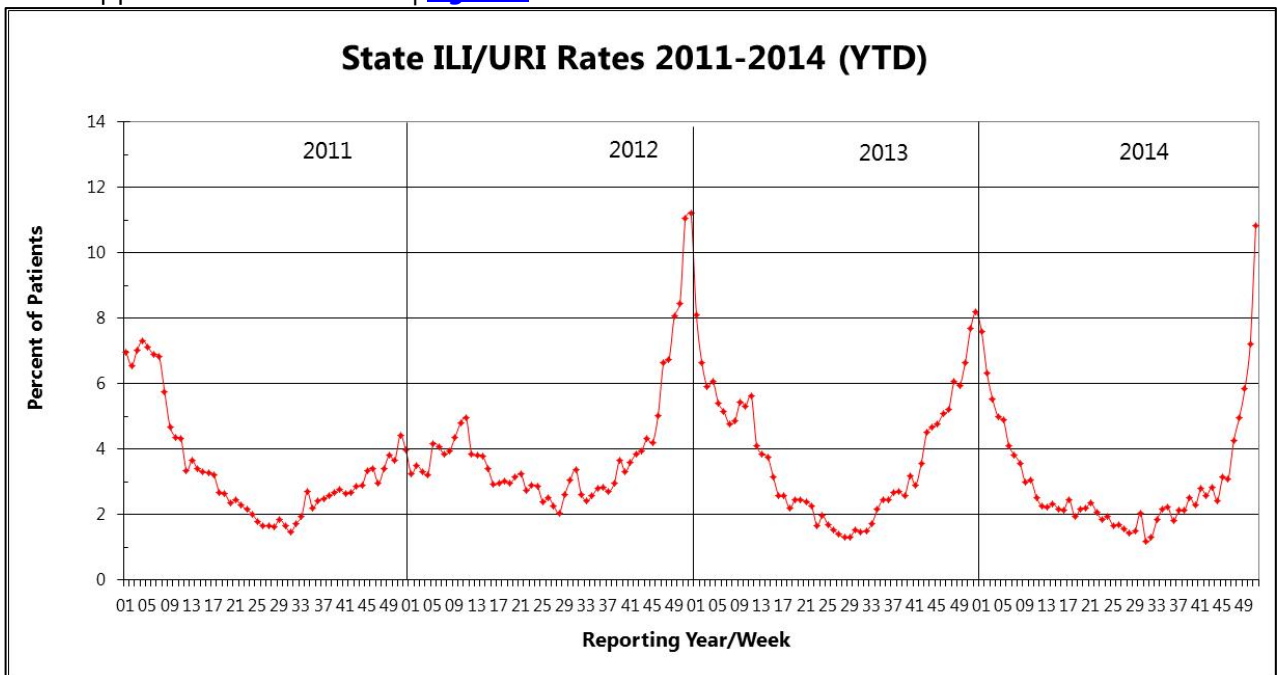
Since week 35, the percentage of reported ILI cases has been highest among those in the **5-24 years** of age group. This trend continued

into week **51**. | [Figure 2](#)

The 2014-15 state ILI rate was **above** the national, Region 4, and state baselines for week **51**. | [Figure 3](#)



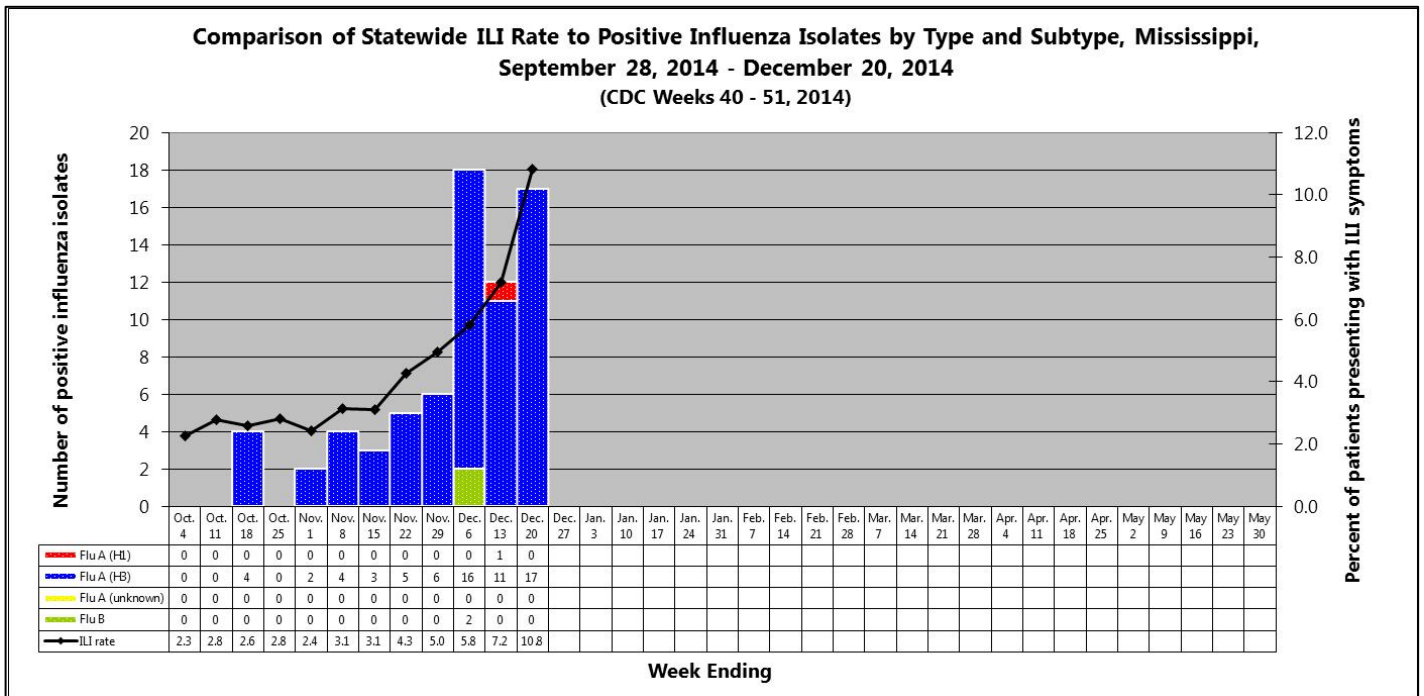
Mississippi ILI Rates 2011-2014 | [Figure 4](#)



### Flu Testing Reports

From week **40** (week ending October 4<sup>th</sup>) through week **51** (week ending December 20<sup>th</sup>), 71 positive influenza samples were identified by MSDH. Sixty-eight samples were identified as influenza A (H3), one as influenza A (H1), and two were identified as influenza B.

The influenza cases were identified from the following counties: Benton (2), Forrest (1), Franklin (1), Harrison (13), Itawamba (1), Jackson (1), Jefferson Davis (1), Jones (3), Lauderdale (5), Madison (5), Marion (1), Marshall (10), Monroe (1), Neshoba (3), Pike (2), Pontotoc (1), Rankin (1), Simpson (2), Sunflower (1), Tate (3), Union (1), Webster (4), Wilkinson (3), and Yazoo (4). One case was from an unidentified county. | [Figure 5](#)



### National and Mississippi Pediatric Mortality Surveillance

National data for week **51** was unavailable.

To date, **eleven** influenza-associated pediatric deaths have been reported nationally during the 2014-2015 influenza season.

Mississippi has had **no** influenza-associated pediatric deaths reported during this influenza season. For additional information on influenza-associated pediatric deaths, please refer to the [CDC's FluView](#).

**National ILI Surveillance**

National data for week **51** was unavailable.

Mississippi reported **“Widespread”** flu activity for week **51**. | **Table 3**

<b>Level of Flu Activity</b>	<b>Definition</b>
<b>No Activity</b>	Overall clinical activity remains low and there are no lab confirmed cases.
<b>Sporadic</b>	Isolated cases of lab confirmed influenza in the state; ILI activity is not increased <u>OR</u> A lab-confirmed outbreak in a single institution in the state; ILI activity is not increased.
<b>Local</b>	Increased ILI within a single region <b>AND</b> recent (within the past 3 weeks) laboratory evidence of influenza in that region. ILI activity in other regions is not increased <u>OR</u> two of more institutional outbreaks (ILI or lab confirmed) within a single region <b>AND</b> recent (within the past 3 weeks) lab confirmed influenza in that region. Other regions do not have increased ILI and virus activity is no greater than sporadic in those regions
<b>Regional</b>	Increased ILI in at least 2 regions but fewer than half of the regions <b>AND</b> recent (within the past 3 weeks) lab confirmed influenza in the affected regions <u>OR</u> Institutional outbreaks (ILI or lab confirmed) in at least 2 regions but fewer than half of the regions <b>AND</b> recent lab confirmed influenza in the affected regions.
<b>Widespread</b>	Increased ILI and/or institutional outbreaks (ILI or lab confirmed) in at least half of the regions <b>AND</b> recent (within the past 3 weeks) lab confirmed influenza in the state.

For up-to-date information on flu activity nationwide, please refer to the CDC’s website:

<http://www.cdc.gov/flu/weekly/fluactivitysurv.htm>.

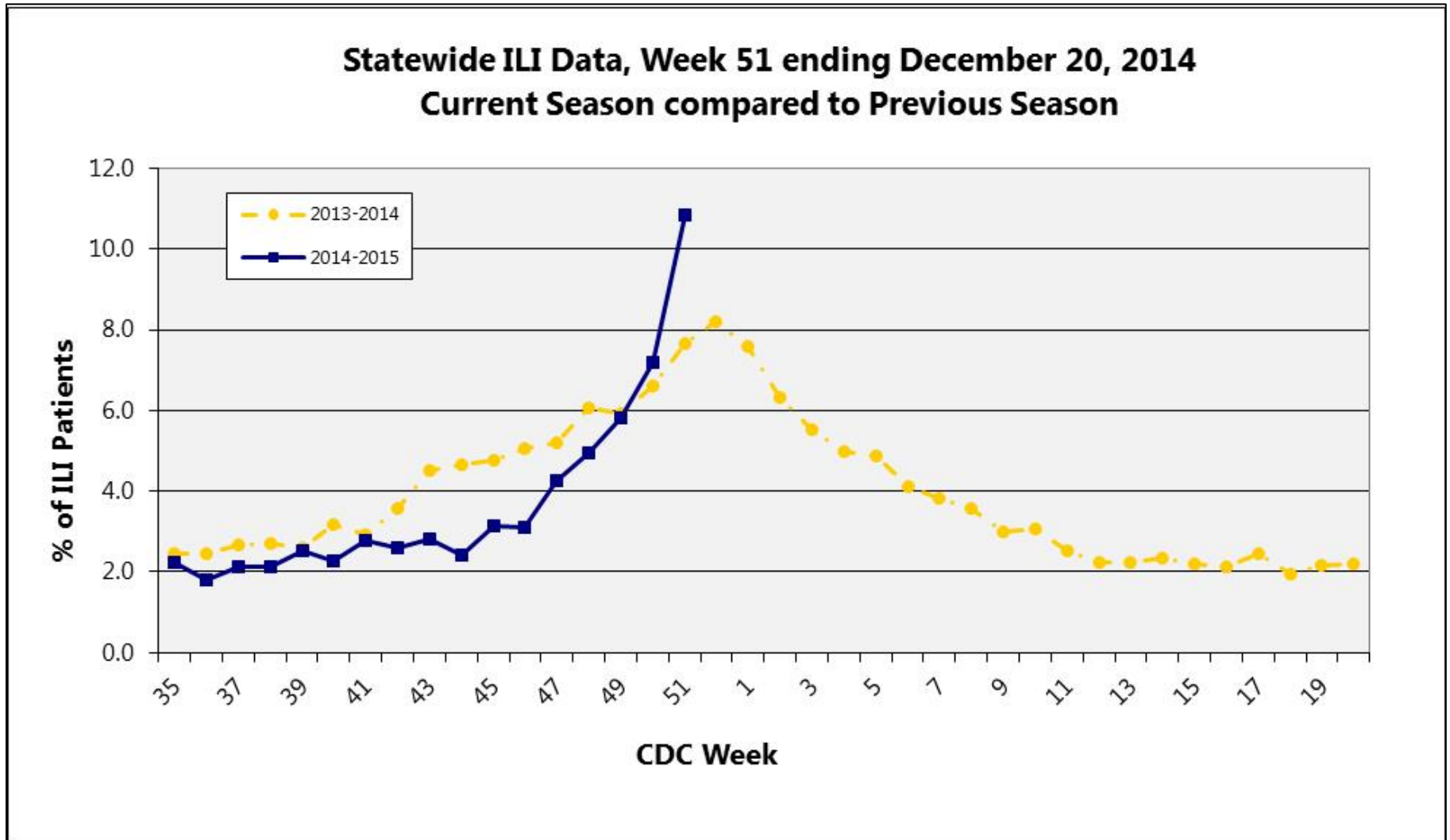
**Additional information:**

<b>Centers for Disease Control and Prevention</b>	<a href="http://cdc.gov/flu/">http://cdc.gov/flu/</a>
<b>Centers for Disease Control and Prevention FluView</b>	<a href="http://www.cdc.gov/flu/weekly/">http://www.cdc.gov/flu/weekly/</a>
<b>Flu.gov</b>	<a href="http://www.flu.gov/">http://www.flu.gov/</a>
<b>MSDH Flu and Pneumonia</b>	<a href="http://msdh.ms.gov/msdhsite/_static/14,0,199.html">http://msdh.ms.gov/msdhsite/_static/14,0,199.html</a>
<b>Google Flu Trends</b>	<a href="http://www.google.org/flutrends/">http://www.google.org/flutrends/</a>
<b>World Health Organization FluNet</b>	<a href="http://www.who.int/influenza/gisrs_laboratory/flunet/en/">http://www.who.int/influenza/gisrs_laboratory/flunet/en/</a>

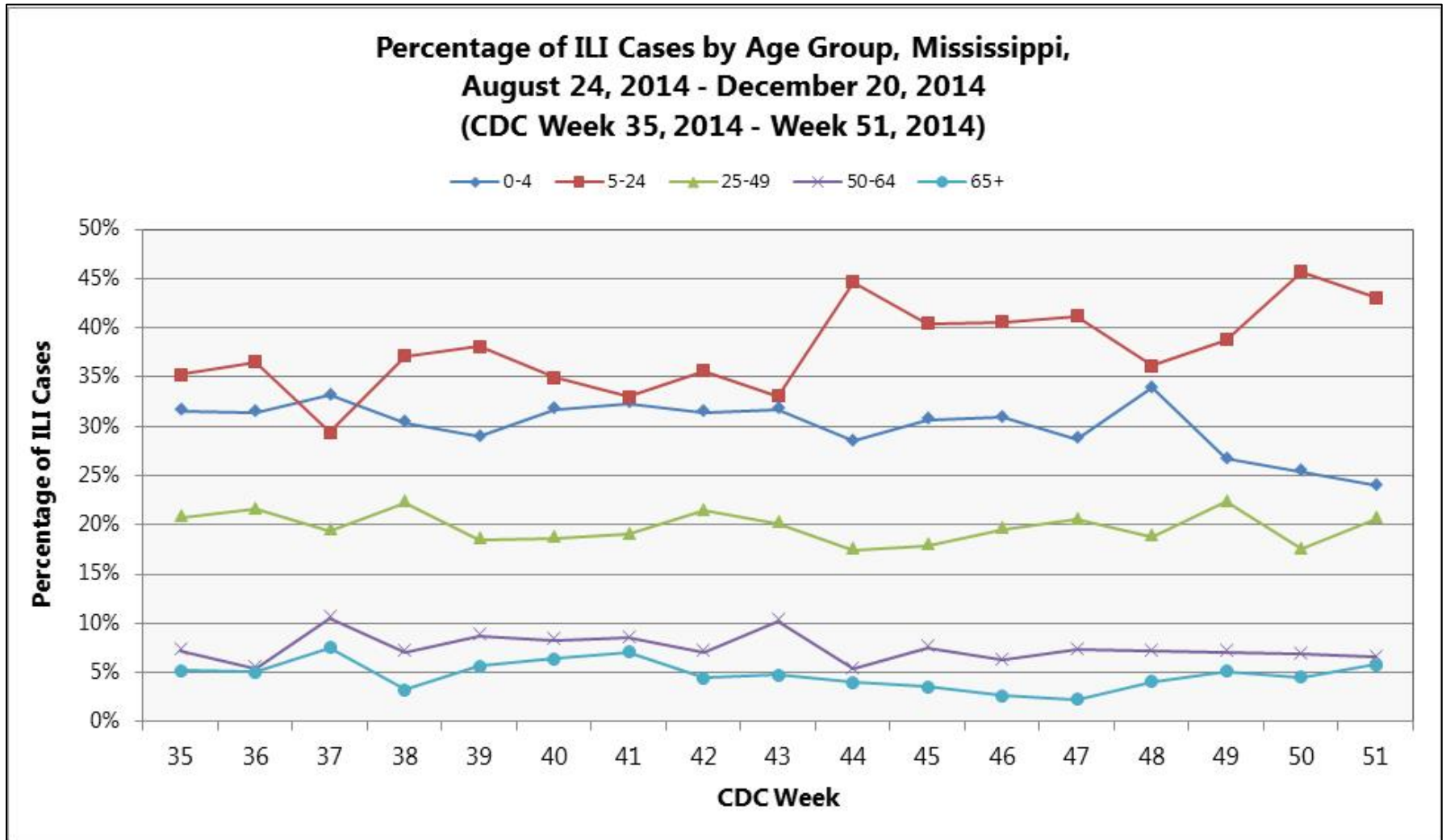
*Page intentionally blank*

## Appendix

Figure 1



**Figure 2**





**Figure 3**

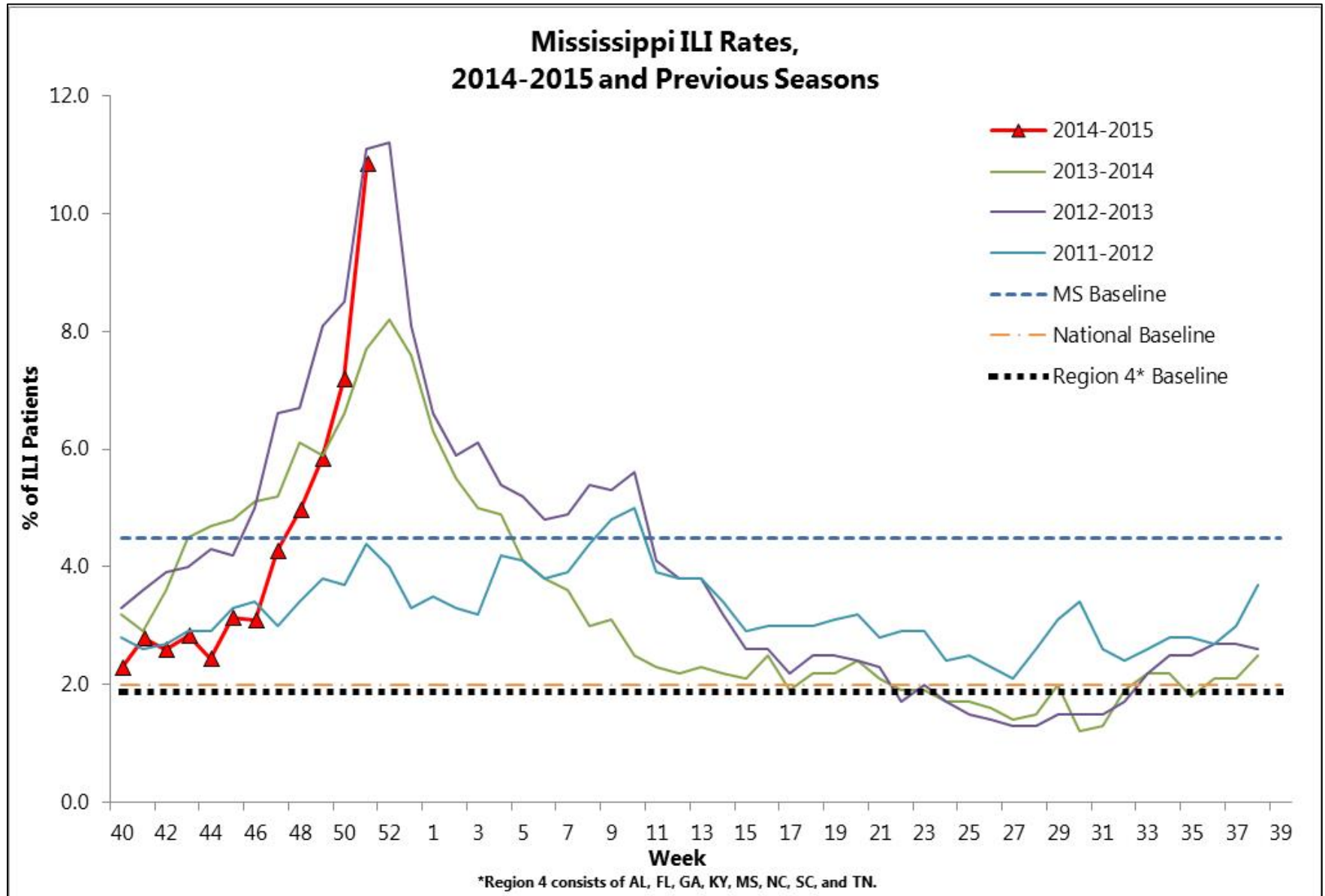


Figure 4

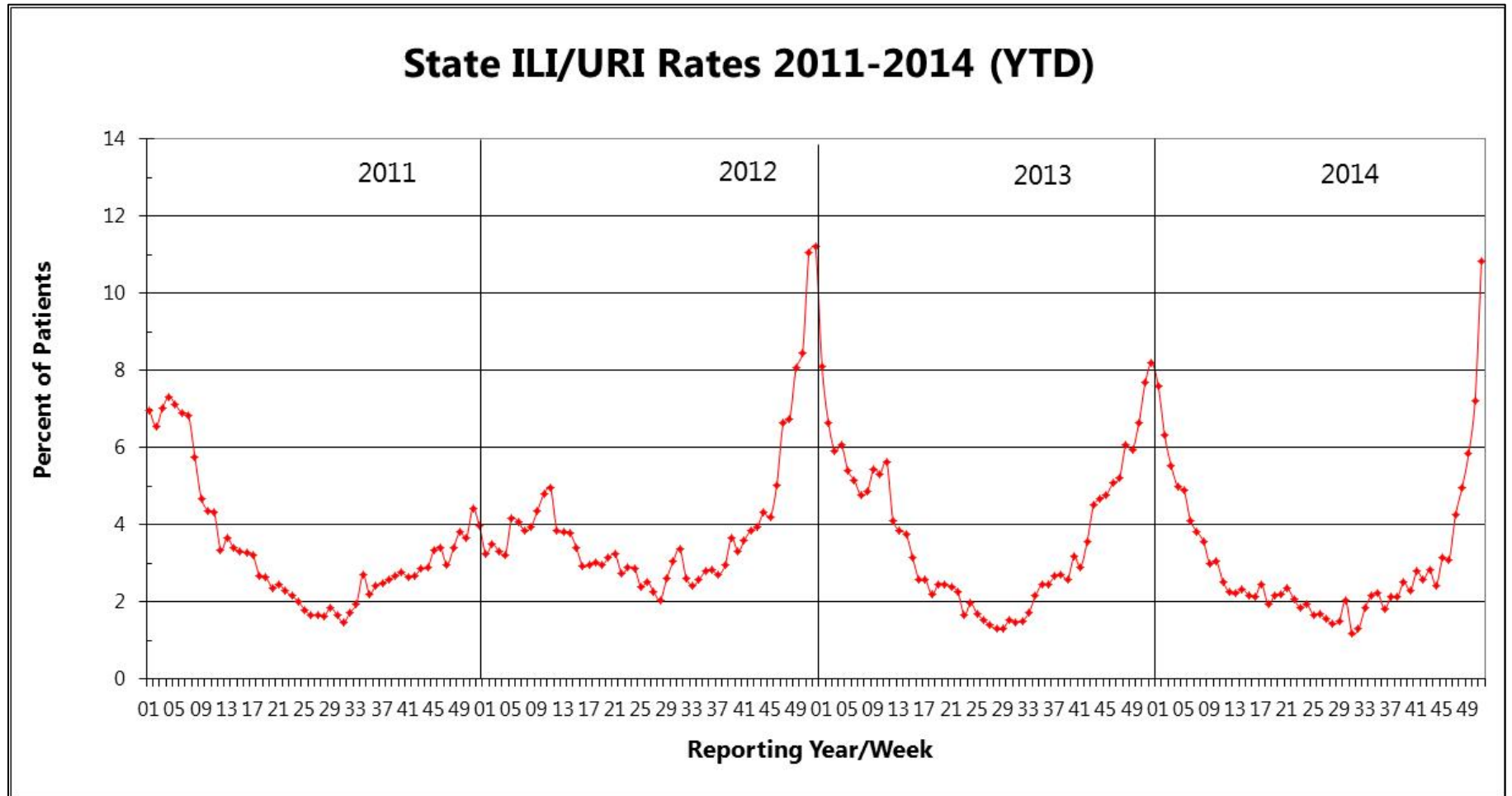


Figure 5

