



2016-2017 Influenza Report Week 43 Oct. 23 – Oct. 29, 2016

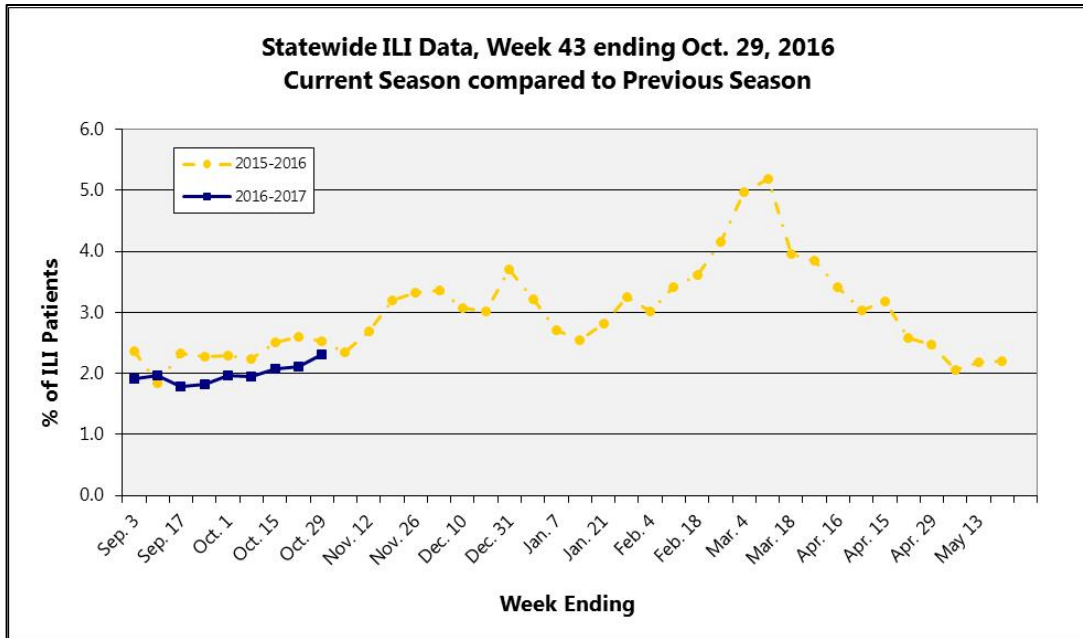
About our flu activity reporting

MSDH relies upon selected sentinel health practitioners across the state to report the percentage of total patient visits consistent with an influenza-like illness (ILI: fever of 100°F or higher AND cough and/or sore throat). Also, providers are supplied with specimen collection kits. Samples are submitted to the Mississippi Public Health Laboratory for influenza PCR testing. Reports are used to estimate the state's ILI rate and the magnitude of the state's influenza activity. Reports represent only the distribution of flu in the state, not an actual count of all flu cases statewide. **Information is provisional only and may change depending on additional reporting from sentinel providers.**

Content

- ❖ [State ILI Surveillance](#)
- ❖ [Flu Testing Reports](#)
- ❖ [National and Mississippi Pediatric Mortality Surveillance](#)
- ❖ [National ILI Surveillance](#)
- ❖ [Appendix](#)
 - [Figure 1](#) (Statewide ILI Data, Current Season compared to Previous Season)
 - [Figure 2](#) (Percentage of ILI Cases by Age Group, Mississippi)
 - [Figure 3](#) (Mississippi ILI Rates, 2016-2017 and Previous Seasons)
 - [Figure 4](#) (State ILI/URI Rates 2013-2016 (YTD))
 - [Figure 5](#) (CDC FluView Weekly Influenza Activity Map)

State ILI Surveillance



During week **43** (10/23/16-10/29/16), the overall state ILI rate (**2.3%**) was **comparable** to the previous week (**2.1%**), and to this time last year (**2.5%**).

| [Figure 1](#)

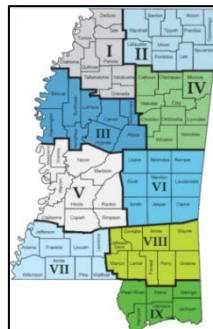
Total number of patients treated by sentinel providers in the last three weeks. | **Table 1**

2016-2017 Influenza Season					
CDC Week	Week Ending	Number of ILI Reports	Total patients	ILI symptoms	ILI Rate (%)
43	Oct. 29	92	13981	324	2.3%
42	Oct. 22	98	14418	305	2.1%
41	Oct. 15	132	18915	393	2.1%

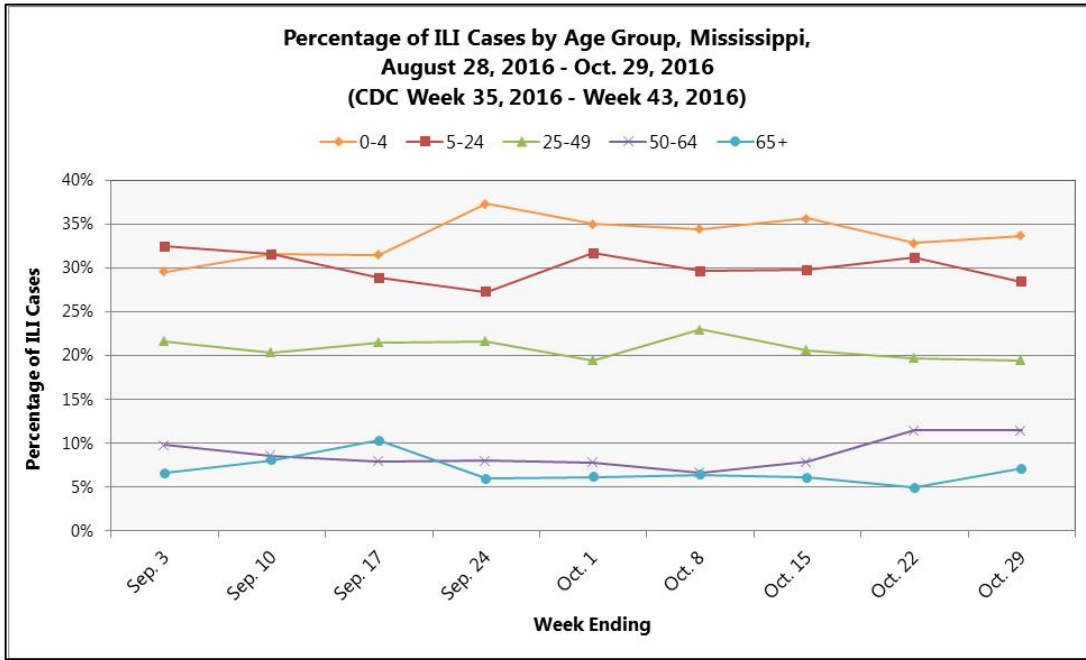
During week **43**, **three** districts (1, 2, and 8) had an increase in ILI activity, while **two** districts (3 and 6) had a decrease.

Three districts (4, 5, and 7) remained about the same.

Information is provisional only and may change depending on additional reporting from sentinel providers. | **Table 2**



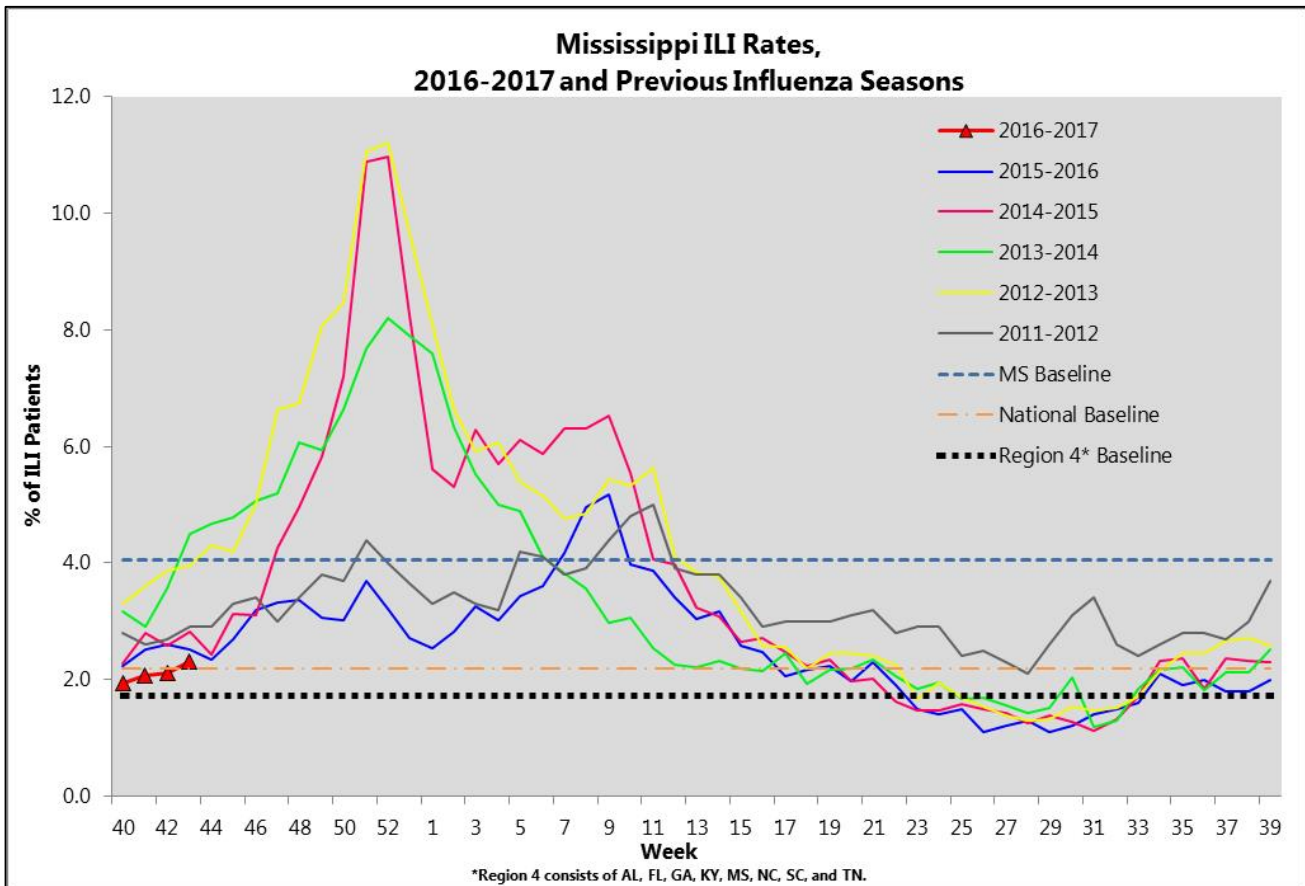
MSDH District ILI Rates (%) 2016-2017		
District	Week 42	Week 43
State	2.1	2.3
I	1.6	2.3
II	0.5	3.4
III	1.9	1.4
IV	1.4	1.3
V	1.8	2.2
VI	7.7	5.4
VII	2.9	3.1
VIII	1.3	1.9
IX	1.1	Data not available



Overall, the percentage of reported ILI cases has been highest among those in the **0-4** and **5-24 years** of age groups. During week **43**, however, the percentage of reported ILI

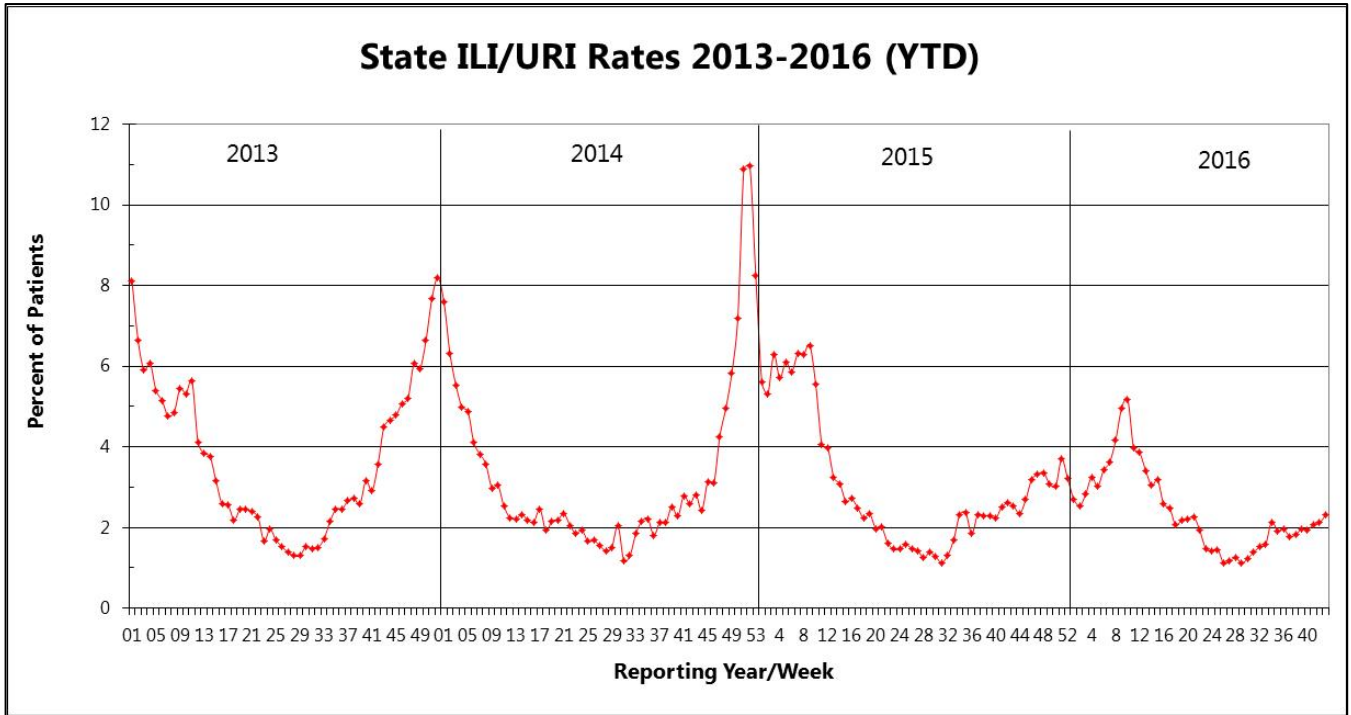
cases was highest among those in the **0-4 years** of age group. | [Figure 2](#)

The 2016-17 state ILI rate was **comparable** to the national baseline, **slightly above** the Region 4 baseline, but was **below** the state baseline, for week **43**. | [Figure 3](#)



*Region 4 consists of AL, FL, GA, KY, MS, NC, SC, and TN.

Mississippi ILI Rates 2013-2016 | [Figure 4](#)



Flu Testing Reports

During week **43** (week ending October 29th), there were no laboratory confirmed influenza cases identified by MSDH Public Health Laboratory.

National and Mississippi Pediatric Mortality Surveillance

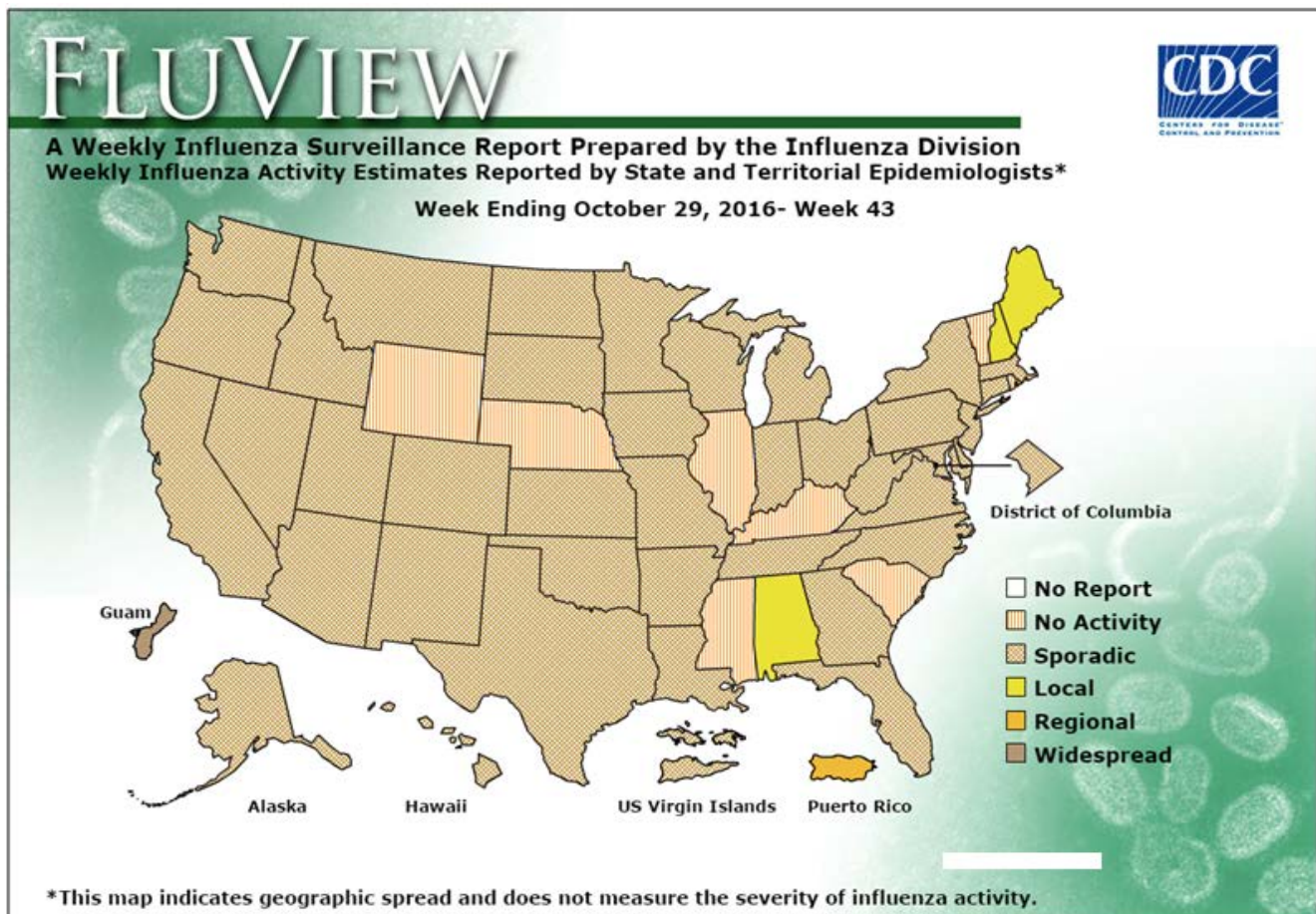
Nationally, two influenza-associated pediatric deaths were reported to CDC during week **43**. Both deaths occurred during the 2015-2016 season and were associated with an influenza A virus for which no subtyping was performed. These deaths bring the total number of reported influenza-associated pediatric deaths occurring during that season to 87.

Mississippi has had no influenza-associated pediatric deaths reported during this influenza season. For additional information on influenza-associated pediatric deaths, please refer to the [CDC's FluView](#).

National ILI Surveillance

For week **43**, the MS ILI rate (2.3%) was **above** the national ILI rate (1.3%).

During week **43**, influenza activity was low in the United States.¹ | [Figure 5](#)



¹For up-to-date information on flu activity nationwide, please refer to the CDC's website: <http://www.cdc.gov/flu/weekly/fluactivitysurv.htm>.

Mississippi reported “**No Activity**” for the influenza activity during week **43**. | **Table 3**

Level of Flu Activity	Definition
No Activity	Overall clinical activity remains low and there are no lab confirmed cases.
Sporadic	Isolated cases of lab confirmed influenza in the state; ILI activity is not increased <u>OR</u> A lab-confirmed outbreak in a single institution in the state; ILI activity is not increased.
Local	Increased ILI within a single region AND recent (within the past 3 weeks) laboratory evidence of influenza in that region. ILI activity in other regions is not increased <u>OR</u> two of more institutional outbreaks (ILI or lab confirmed) within a single region AND recent (within the past 3 weeks) lab confirmed influenza in that region. Other regions do not have increased ILI and virus activity is no greater than sporadic in those regions
Regional	Increased ILI in at least 2 regions but fewer than half of the regions AND recent (within the past 3 weeks) lab confirmed influenza in the affected regions <u>OR</u> Institutional outbreaks (ILI or lab confirmed) in at least 2 regions but fewer than half of the regions AND recent lab confirmed influenza in the affected regions.
Widespread	Increased ILI and/or institutional outbreaks (ILI or lab confirmed) in at least half of the regions AND recent (within the past 3 weeks) lab confirmed influenza in the state.

Additional influenza information:

Centers for Disease Control and Prevention	http://cdc.gov/flu/
Centers for Disease Control and Prevention FluView	http://www.cdc.gov/flu/weekly/
Flu.gov	http://www.flu.gov/
MSDH Flu and Pneumonia	http://msdh.ms.gov/msdhsite/ static/14,0,199.html
World Health Organization FluNet	http://www.who.int/influenza/gisrs_laboratory/flunet/en/

Appendix

Figure 1

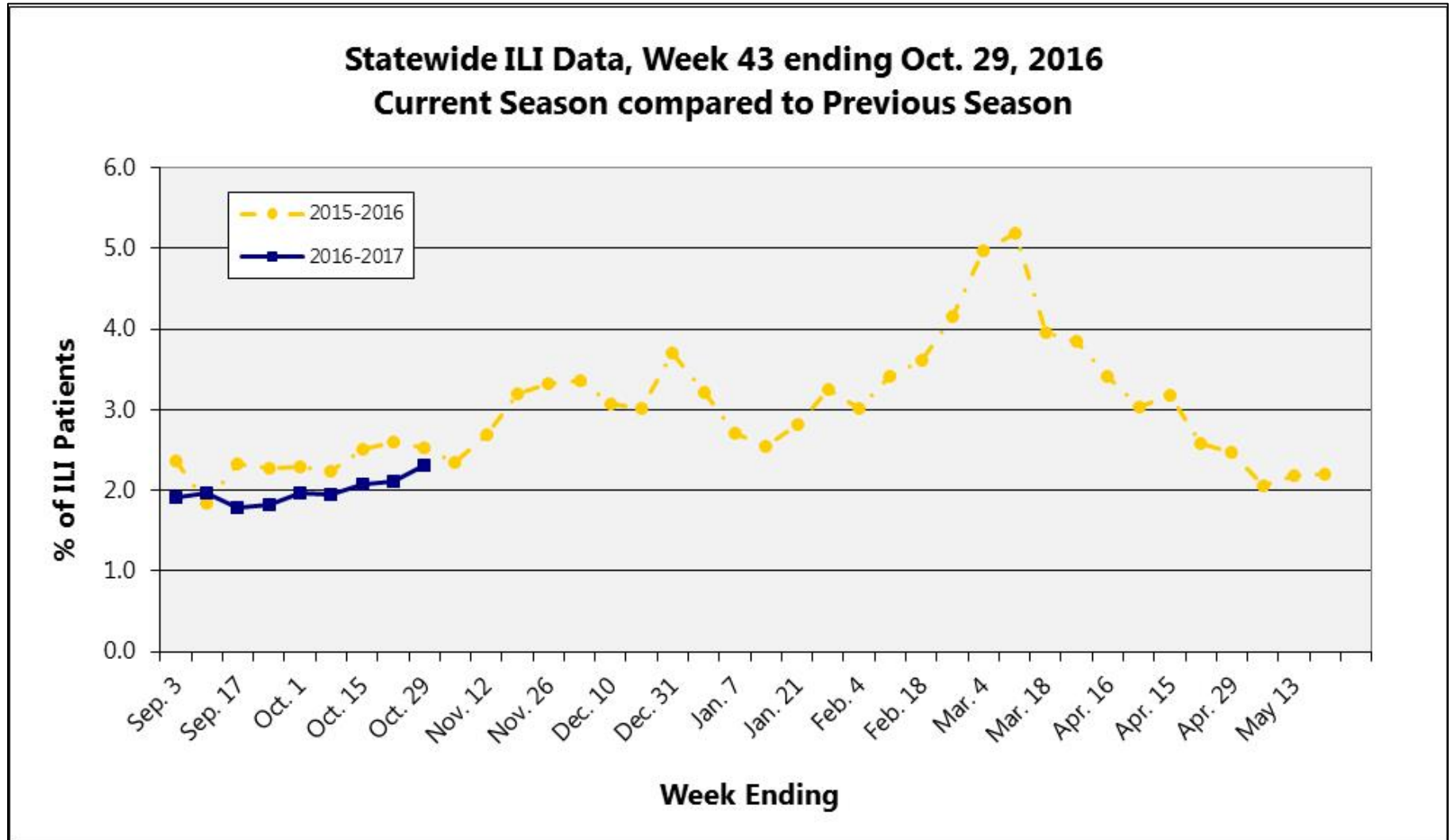


Figure 2

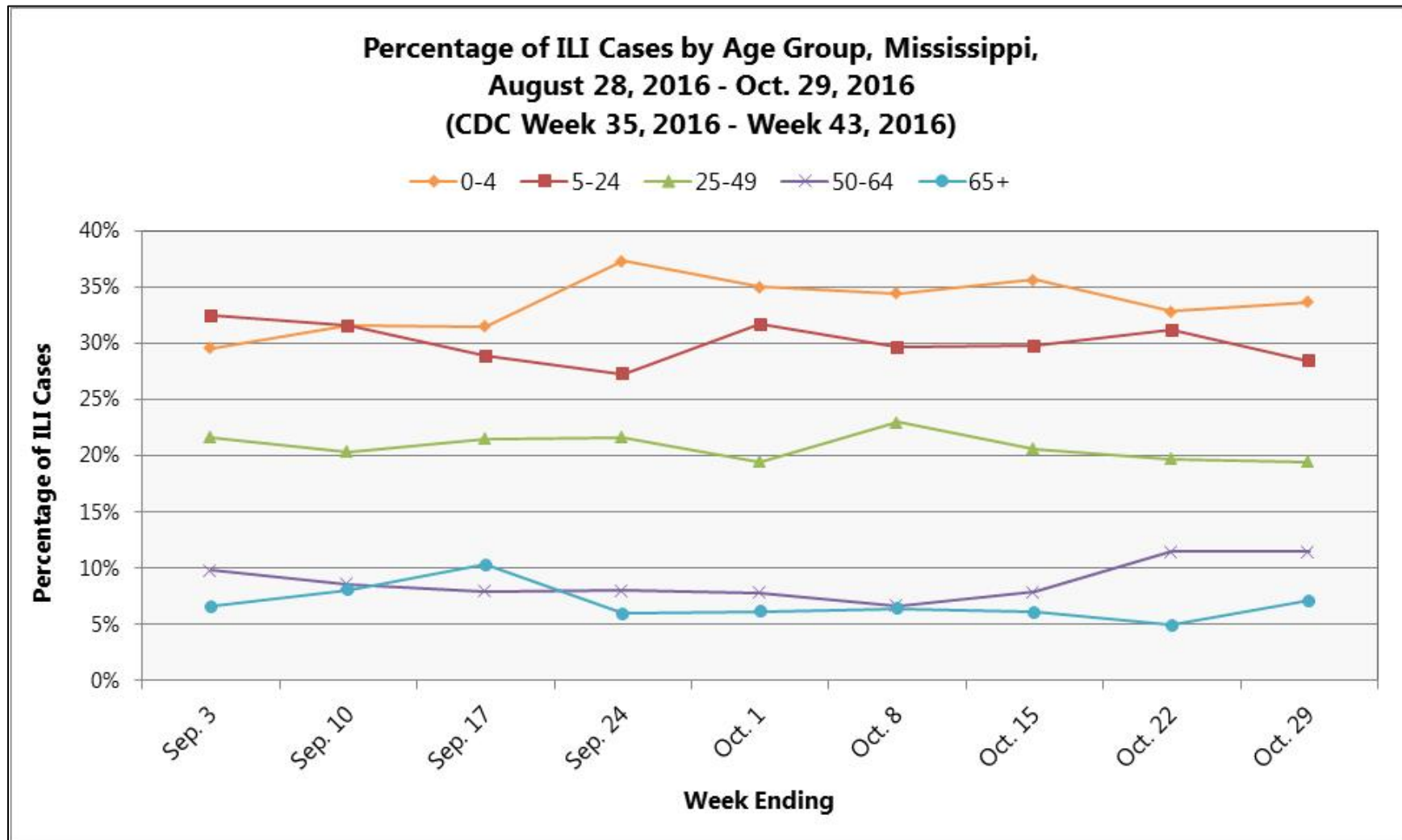


Figure 3

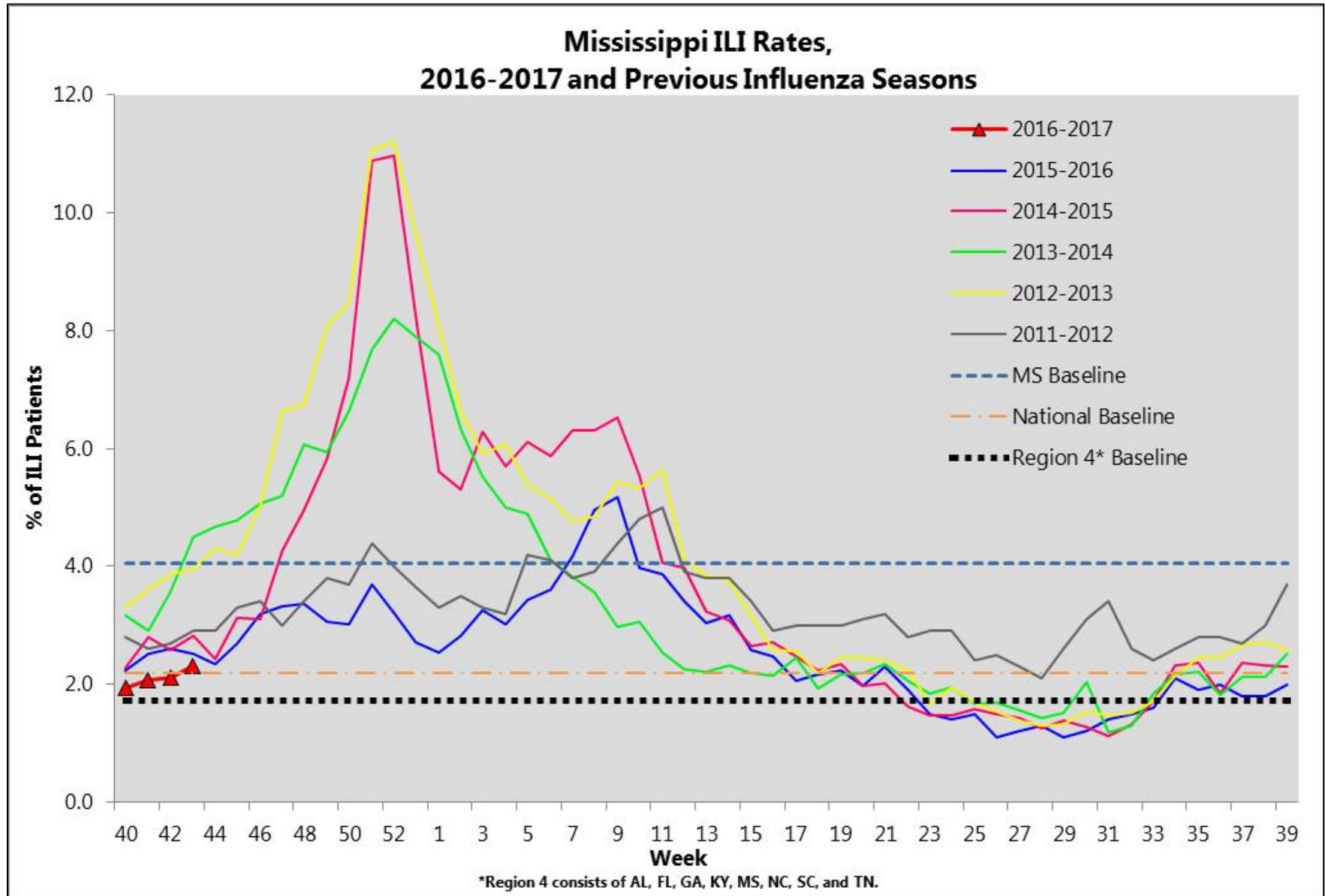


Figure 4

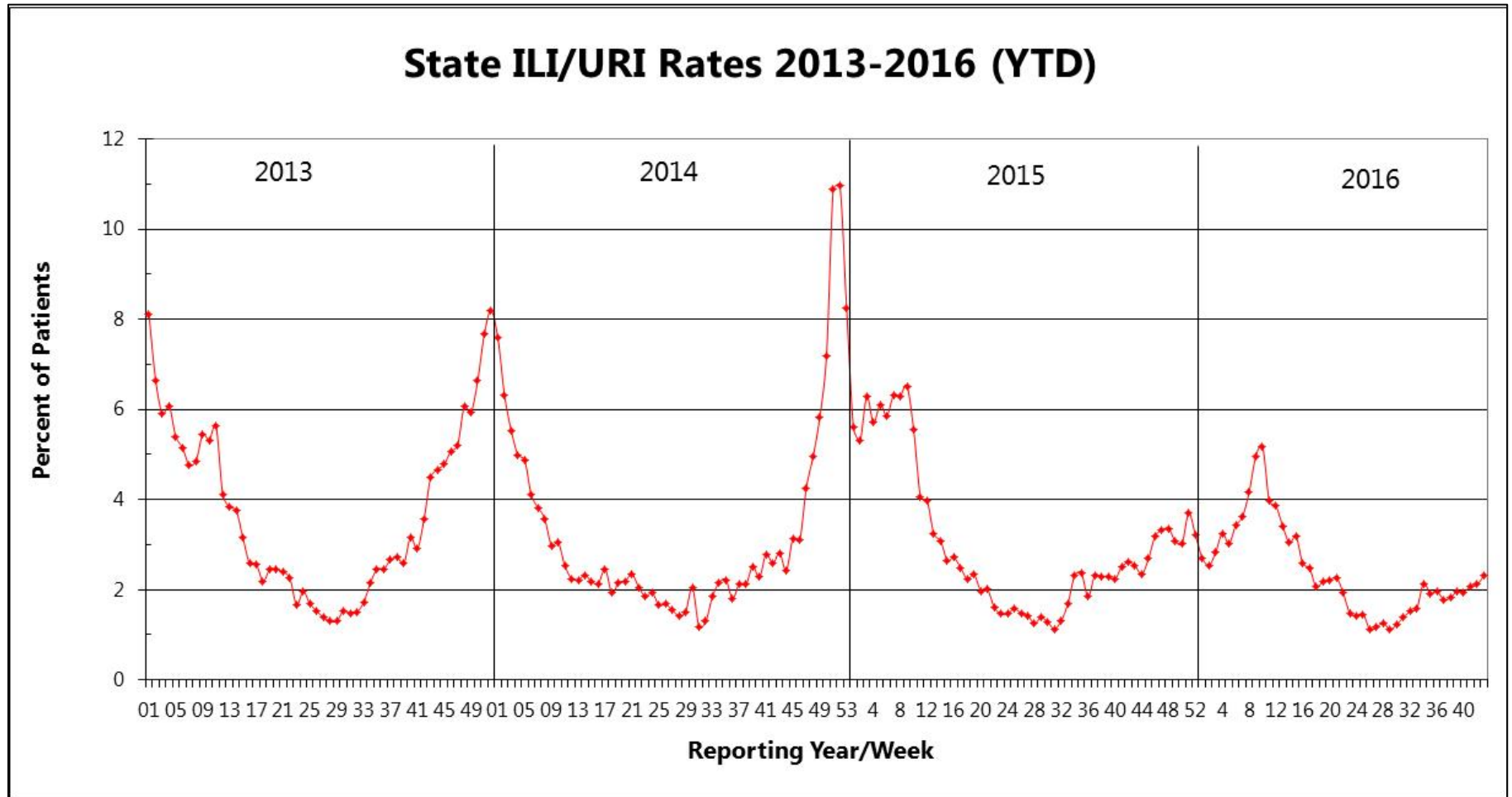


Figure 5

