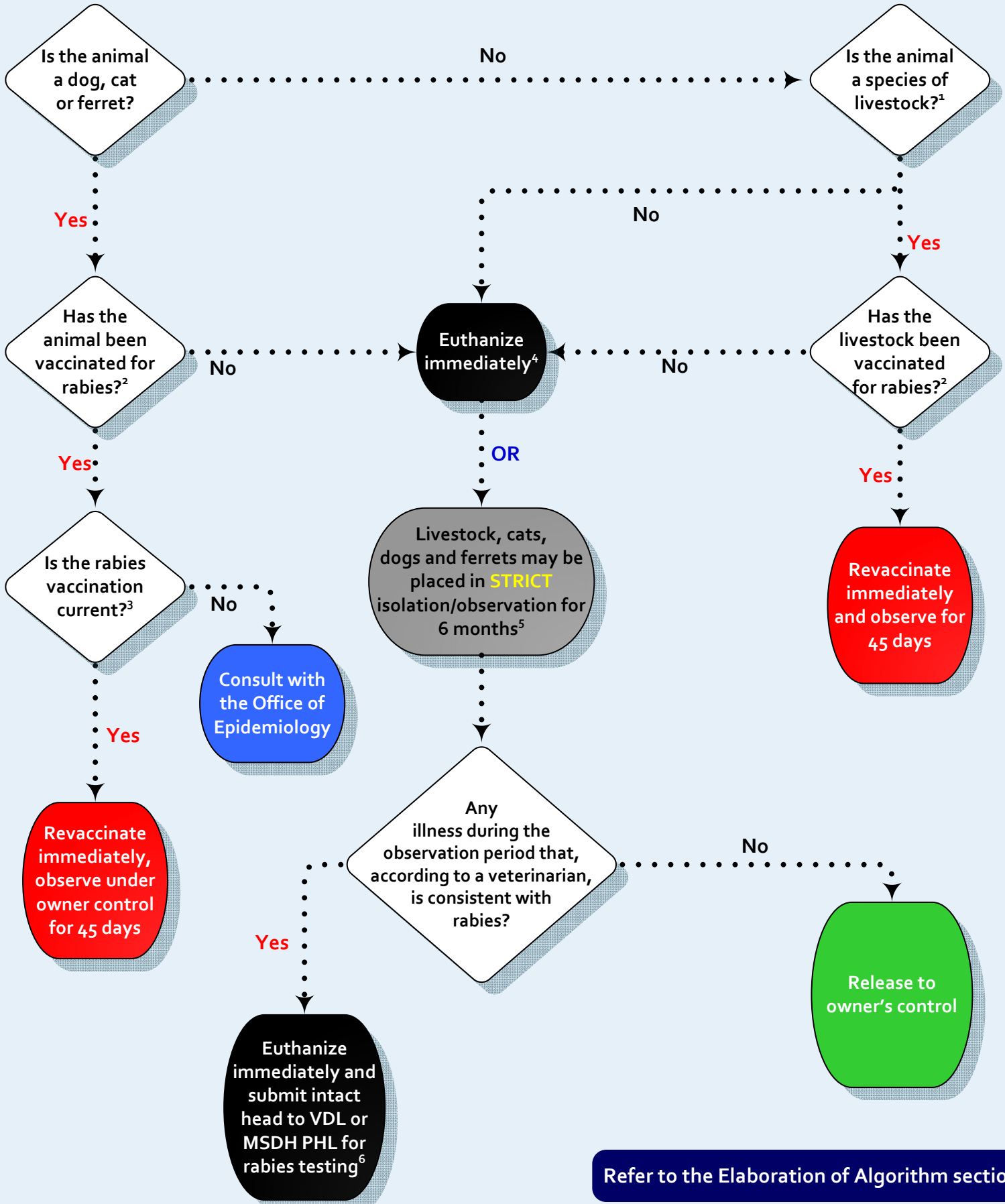


Animal Postexposure Recommendations Algorithm

Animals Exposed to Rabid or Potentially Rabid Animals



Any animal potentially exposed to rabies virus by a wild, carnivorous mammal or a bat that is not available for testing should be regarded as having been exposed to rabies.



Refer to the Elaboration of Algorithm section

Reference: *Compendium of Animal Rabies Prevention and Control, 2011*

1. Is the animal a species of livestock?

Livestock is defined as cattle, horses, sheep, and goats.

2. Has the animal/livestock been vaccinated for rabies?

Vaccination should be in accordance with the *Compendium of Animal Rabies Prevention and Control* (<http://www.cdc.gov/mmwr/preview/mmwrhtml/rr6006a1.htm>) and state regulations.

3. Is the rabies vaccination current?

According to state regulations, 3-year immunity vaccine is used in Mississippi. If an animal has been vaccinated in accordance with the *Compendium of Animal Rabies Prevention and Control* and has been vaccinated in the last 3 years with a 3-year immunity vaccine, the animal is considered current. If the animal is not current on vaccinations, consult with the Office of Epidemiology at 601-576-7725. These situations will be handled on a case-by-case basis.

4. Euthanize immediately

If the animal is euthanized immediately, there is no need to submit the head for testing since the minimum incubation period would not be met and rabies would not be detected in the brain.

5. Livestock, cats, dogs and ferrets may be placed in STRICT isolation/observation for 6 months

This is an alternative for cats, dogs, ferrets and livestock, but not recommended. ***This is NOT an option for wildlife.***

Small animals may be more easily isolated at a veterinarian's office or animal control facility. The animal should be rabies vaccinated one month prior to completion of isolation.

Please refer to the Mississippi Board of Animal Health for Livestock guidance (http://www.mbah.state.ms.us/disease_programs/rabies/index.html).

6. Euthanize immediately and submit intact head to VDL or MSDH PHL for rabies testing

All testing is performed by the Mississippi State Department of Health Public Health Laboratory (MSDH PHL) using direct fluorescent antibody tests. Samples sent to the Veterinary Diagnostic Lab (VDL) will be forwarded to the MSDH PHL. Coordinate with the Office of Epidemiology for testing approval and specimen submission.