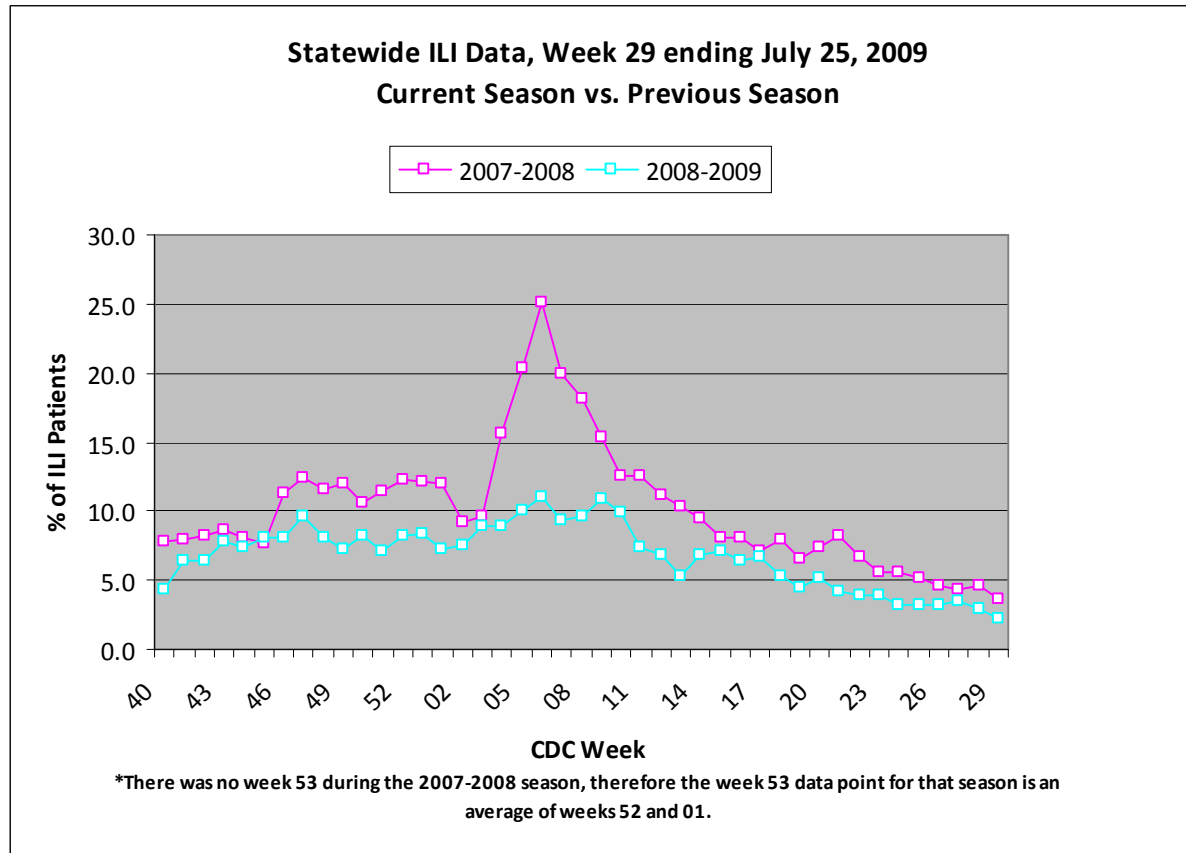


For week 29 (07/19/09- 07/25/09), the overall state ILI rate (2.3%) decreased slightly from last week (2.9%) and was lower than this time last year (3.6%). The state ILI rate appears to be leveling off as it did this time last year.



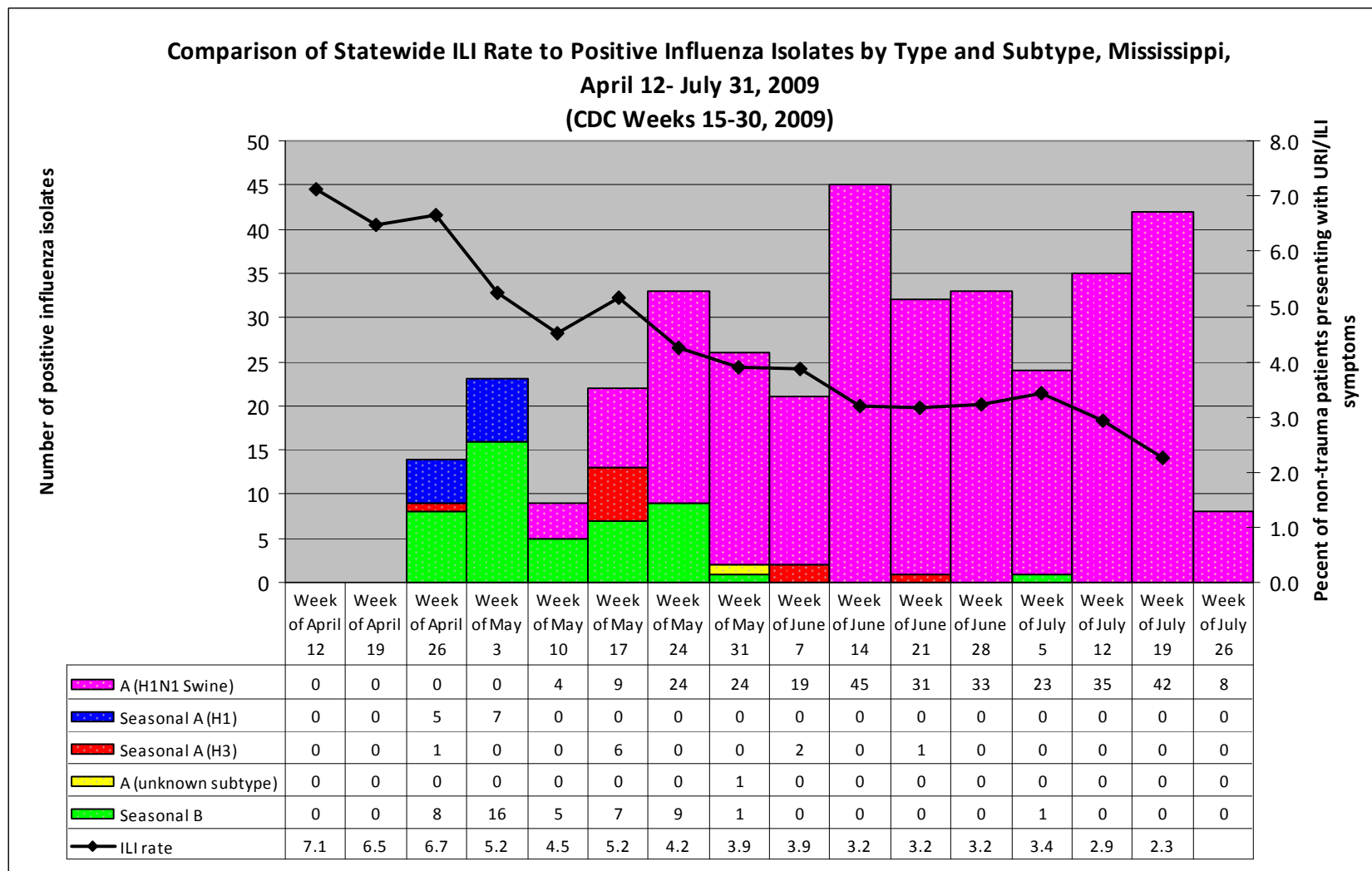
During week 29, five districts had a decrease in ILI activity (2, 3, 6, 8, and 9), one district had an increase (7), and three districts remained about the same (1, 4, and 5).

**\*\*\*Due to the increased testing for the presence of Novel H1N1 (swine) flu in MS, 1451 flu specimens have been submitted for testing to the MSDH PHL since April 27<sup>th</sup>. 297 specimens have tested positive for novel H1N1 (swine) flu. The positives were from the following counties:**

County	Total
<b>Total</b>	<b>297</b>
Adams	1
Alcorn	2
Attala	1
Bolivar	2
Calhoun	1
Chickasaw	3
Choctaw	3
Clarke	2
Coahoma	8
Copiah	3
Covington	4
DeSoto	7
Forrest	15
Franklin	1
George	3
Greene	4
Hancock	2
Harrison	40
Hinds	14
Holmes	3
Jackson	22
Jasper	1
Jefferson	1
Jones	4
Lafayette	2
Lamar	17
Lauderdale	7

Lawrence	1
Lee	2
Leflore	2
Lincoln	5
Lowndes	7
Madison	11
Marion	5
Monroe	4
Neshoba	5
Oktibbeha	4
Panola	6
Pearl River	1
Perry	2
Pike	1
Prentiss	1
Rankin	12
Scott	6
Simpson	1
Smith	2
Sunflower	2
Tishomingo	2
Union	1
Walthall	4
Warren	4
Webster	3
Winston	27
Yazoo	3

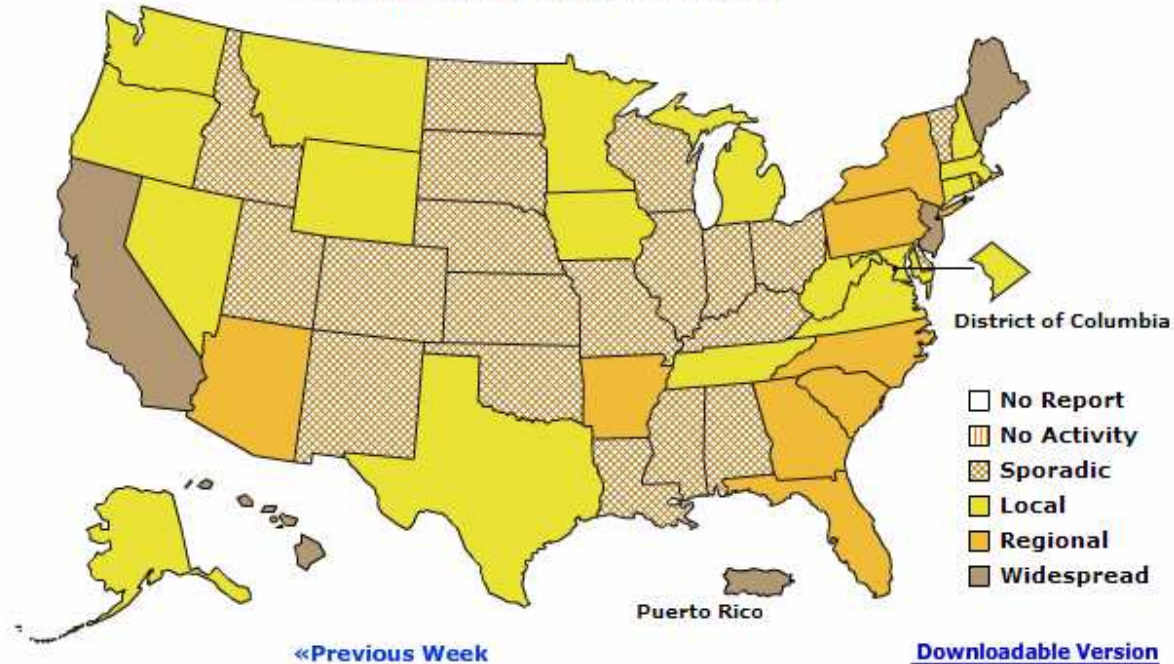
Below is a comparison of the state ILI rate to the number of positive influenza isolates since mid- April. Starting in late May and into July, the predominate flu type identified has been novel H1N1 (swine) flu.



Mississippi reported “sporadic” activity for week 29. For more information on flu activity nationwide, please refer to the CDC’s website at: <http://www.cdc.gov/flu/weekly/fluactivity.htm>.

**A Weekly Influenza Surveillance Report Prepared by the Influenza Division  
Weekly Influenza Activity Estimates Reported by State and Territorial Epidemiologists\***

**Week Ending July 25, 2009- Week 29**



\*This map indicates geographic spread and does not measure the severity of influenza activity.