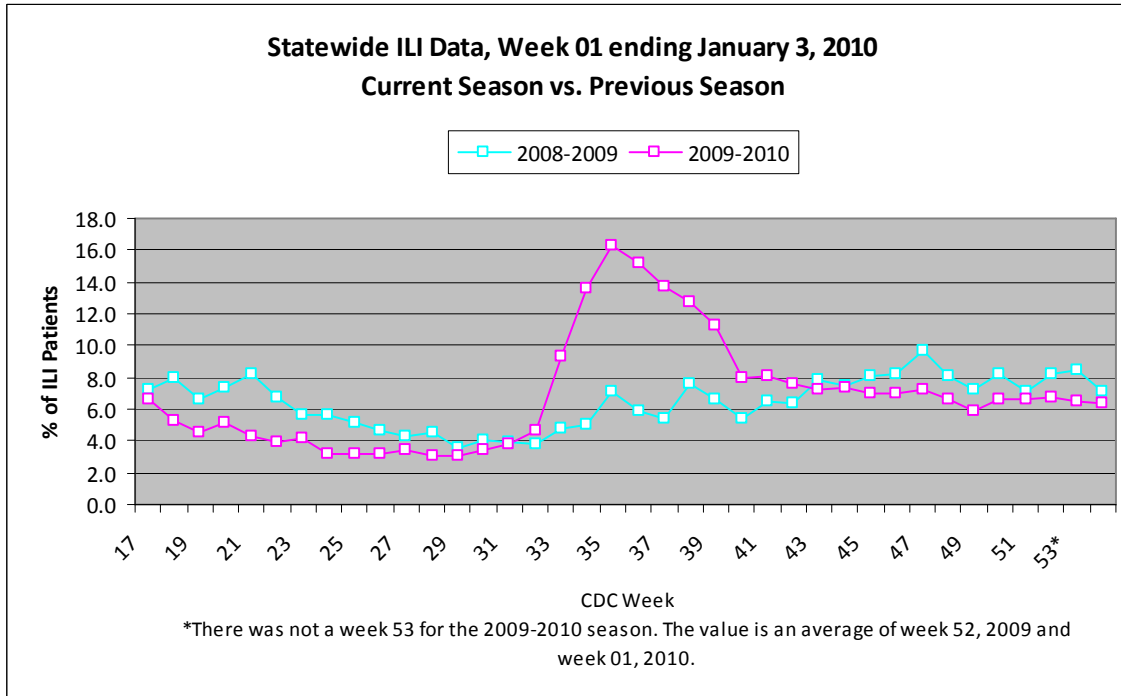
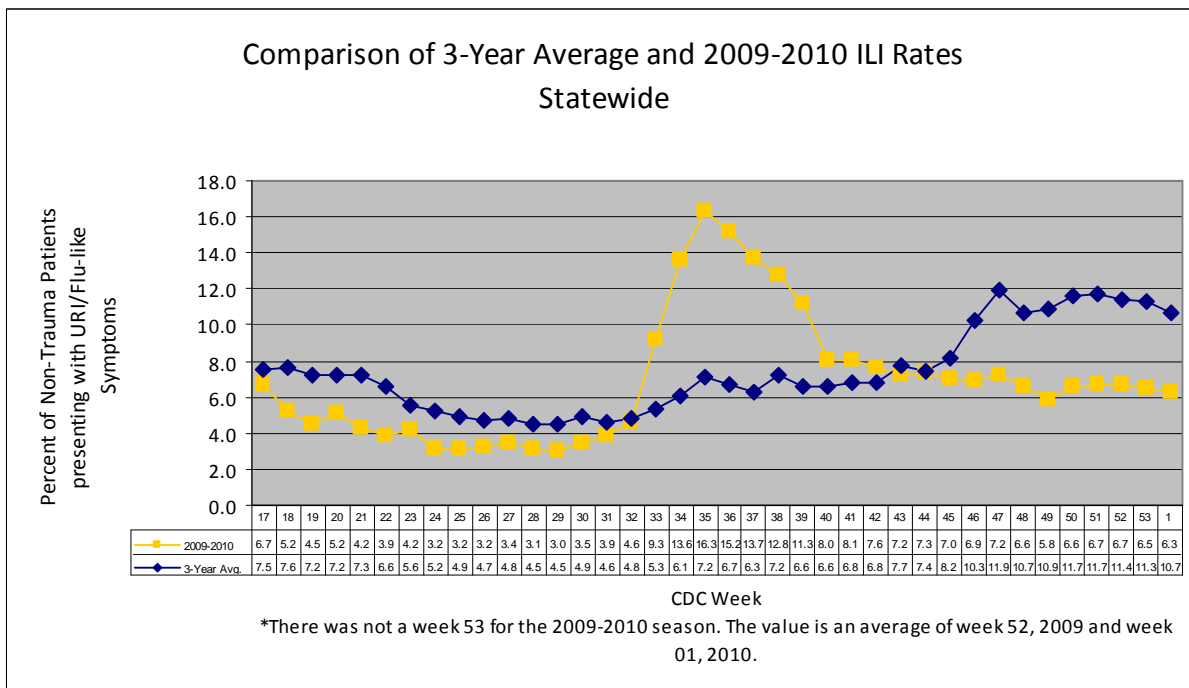


For week 01 (01/03/10- 01/09/10), the overall state ILI rate (6.3%) was comparable to last week (6.7%), but was lower than this time last year (7.1%).



The 2009-10 state ILI rate was below baseline for week 01 and has been below baseline for the past nine weeks.



During week 01, three districts (2, 5, and 9) had a decrease in ILI activity, three districts (1, 6, and 8) had an increase, and one remained about the same (4).

To date, 2,797 flu specimens have been submitted for testing to the MSDH PHL since April 27th. 1,297 lab-confirmed novel H1N1 specimens have been reported to MSDH. This total includes 325 positives reported from outside labs. There have been a total of 23 reported flu deaths, 14 that were confirmed H1N1. The positive cases and deaths were from the following counties:

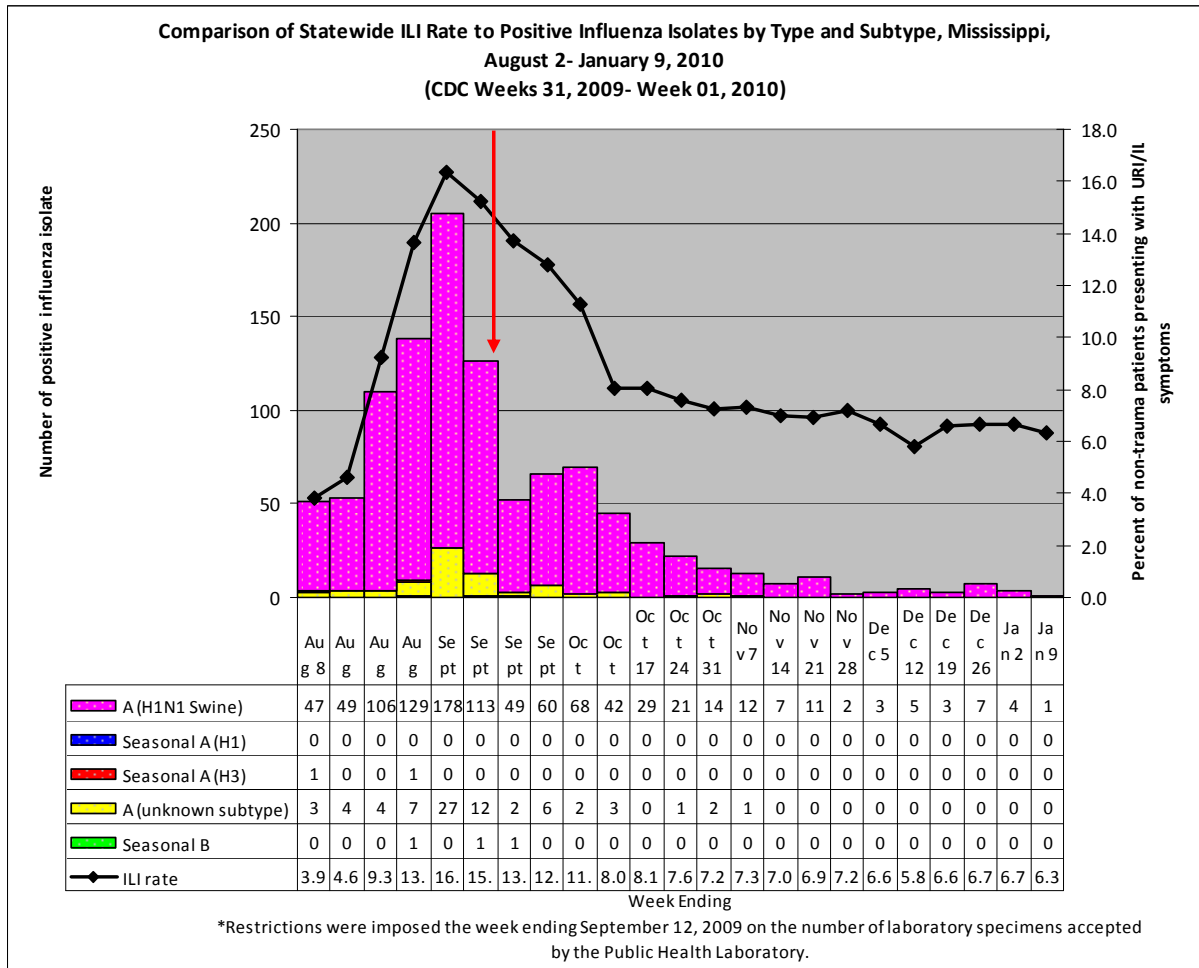
	H1N1 Swine	All Flu Deaths	H1N1 Death	Other Flu Deaths
Total	1,297	23	14	9
Adams	7	0	0	0
Alcorn	8	1	0	1
Amite	0	0	0	0
Attala	6	0	0	0
Benton	1	0	0	0
Bolivar	13	0	0	0
Calhoun	16	0	0	0
Carroll	3	0	0	0
Chickasaw	12	0	0	0
Choctaw	6	0	0	0
Claiborne	1	0	0	0
Clarke	22	0	0	0
Clay	5	0	0	0
Coahoma	75	0	0	0
Copiah	8	0	0	0
Covington	10	1	1	0
DeSoto	71	0	0	0
Forrest	22	0	0	0
Franklin	3	0	0	0
George	6	0	0	0
Greene	4	0	0	0
Grenada	32	0	0	0
Hancock	16	2	2	0
Harrison	102	0	0	0
Hinds	63	1	0	1
Holmes	15	0	0	0
Humphreys	2	0	0	0
Issaquena	0	0	0	0
Itawamba	0	0	0	0
Jackson	94	3	1	2
Jasper	10	0	0	0
Jefferson	2	0	0	0

Jefferson Davis	2	0	0	0
Jones	18	4	3	1
Kemper	6	0	0	0
Lafayette	13	0	0	0
Lamar	22	0	0	0
Lauderdale	19	0	0	0
Lawrence	4	0	0	0
Leake	20	0	0	0
Lee	8	0	0	0
Leflore	7	0	0	0
Lincoln	11	0	0	0
Lowndes	12	0	0	0
Madison	47	0	0	0
Marion	52	1	1	0
Marshall	15	0	0	0
Monroe	17	0	0	0
Montgomery	9	0	0	0
Neshoba	17	0	0	0
Newton	6	0	0	0
Noxubee	3	0	0	0
Oktibbeha	24	0	0	0
Panola	34	0	0	0
Pearl River	9	1	0	1
Perry	2	0	0	0
Pike	13	1	1	0
Pontotoc	2	0	0	0
Prentiss	3	0	0	0
Quitman	11	0	0	0
Rankin	49	0	0	0
Scott	17	0	0	0
Sharkey	0	0	0	0
Simpson	3	1	0	1
Smith	5	0	0	0
Stone	4	1	1	0
Sunflower	4	0	0	0
Tallahatchie	3	0	0	0
Tate	29	2	1	1
Tippah	1	1	1	0
Tishomingo	2	0	0	0
Tunica	16	0	0	0
Union	4	0	0	0
Walthall	17	0	0	0
Warren	8	0	0	0
Washington	11	2	1	1

Wayne	3	0	0	0
Webster	10	1	1	0
Wilkinson	1	0	0	0
Winston	40	0	0	0
Yalobusha	9	0	0	0
Yazoo	15	0	0	0
Unknown	5	0	0	0

*Other flu types include any flu case not confirmed as H1N1 swine flu.

Below is a comparison of the state ILI rate to the number of positive influenza isolates since August 2nd. The predominant flu type identified continues to be novel H1N1 (swine) flu.



Mississippi reported “local” (Outbreaks of influenza or increases in ILI cases and recent laboratory-confirmed influenza in a single region of the state) activity for week 52. For more information on flu activity nationwide, please refer to the CDC’s website at: <http://www.cdc.gov/flu/weekly/fluactivity.htm>.

**A Weekly Influenza Surveillance Report Prepared by the Influenza Division
Weekly Influenza Activity Estimates Reported by State and Territorial Epidemiologists***

Week Ending January 2, 2010- Week 52

