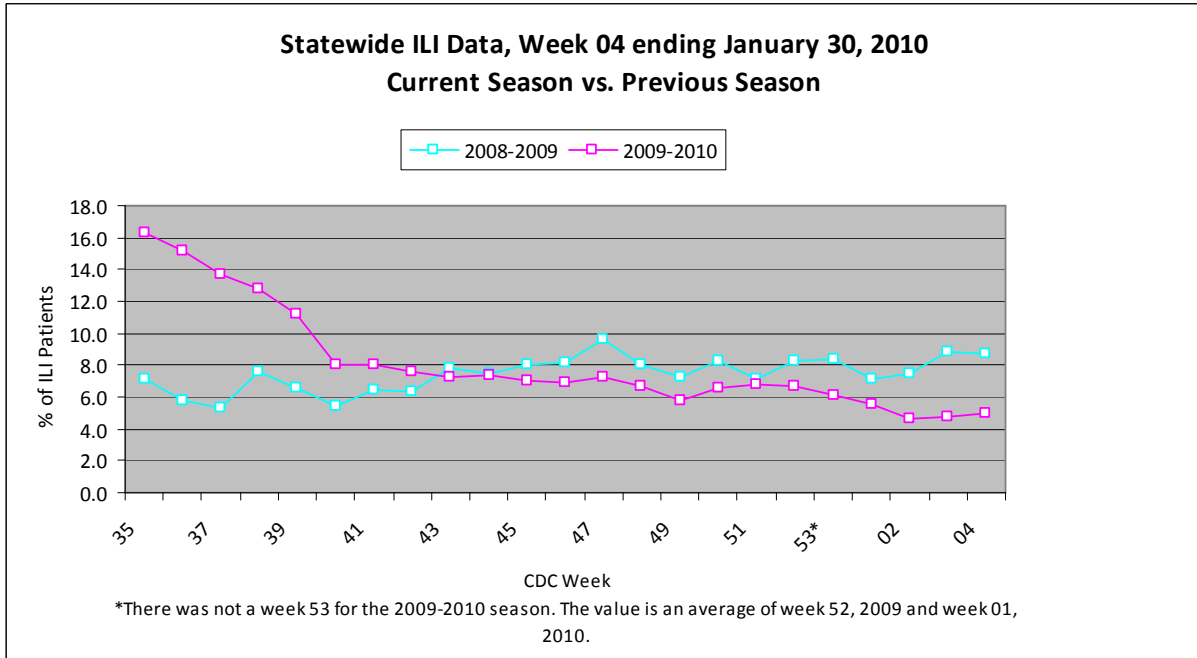
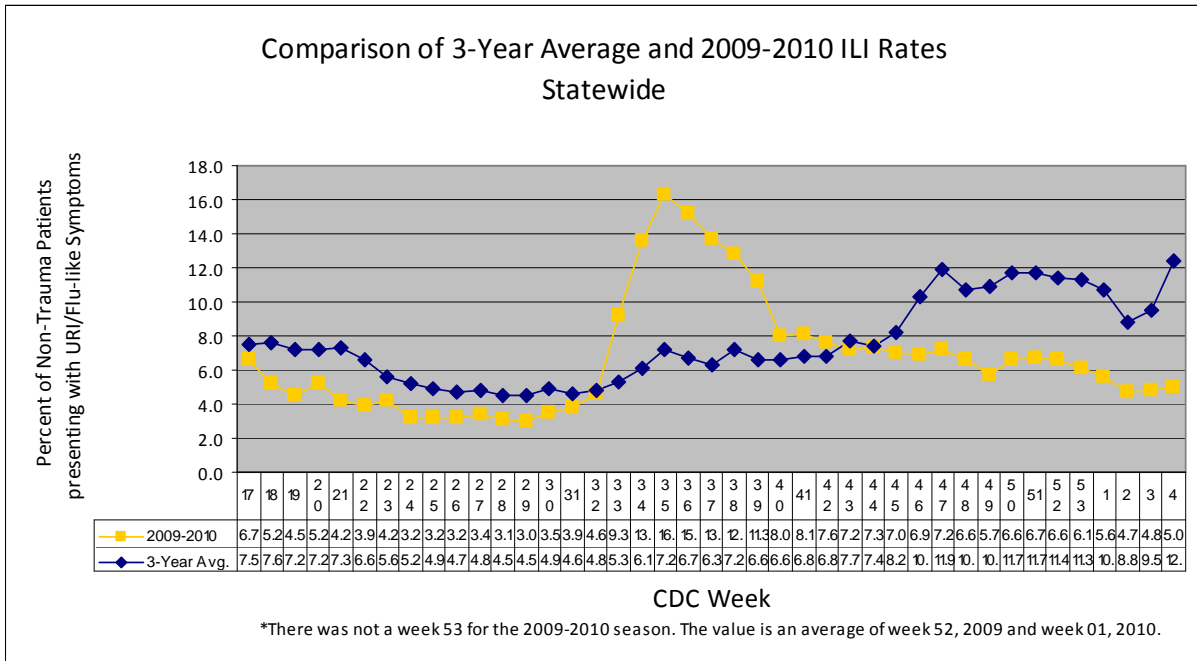


For week 04 (01/24/10- 01/30/10), the overall state ILI rate (5.0%) was comparable to last week (4.8%), but was lower than this time last year (8.8%).



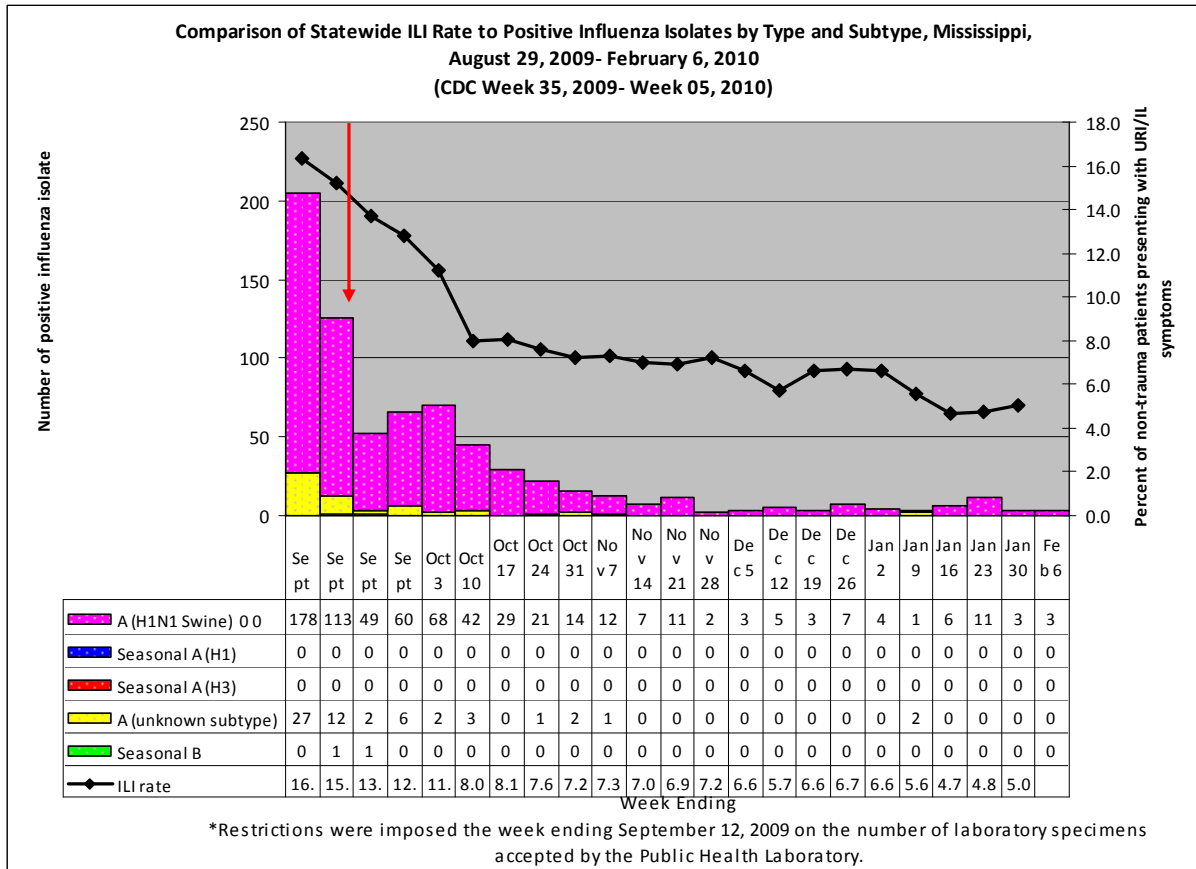
The 2009-10 state ILI rate was below baseline for week 04 and has been below baseline for the past three months.



During week 04, three districts (1, 2, and 8) had a decrease in ILI activity, two districts (3 and 4) had an increase, and four remained about the same (5, 6, 7, and 9).

Since August 29th, there have been a total of 23 reported flu deaths, 12 that were confirmed H1N1. The two most recent flu deaths both occurred in DeSoto County in late January.

Below is a comparison of the state ILI rate to the number of positive influenza isolates since August 29th. The predominant flu type identified continues to be novel H1N1 (swine) flu.



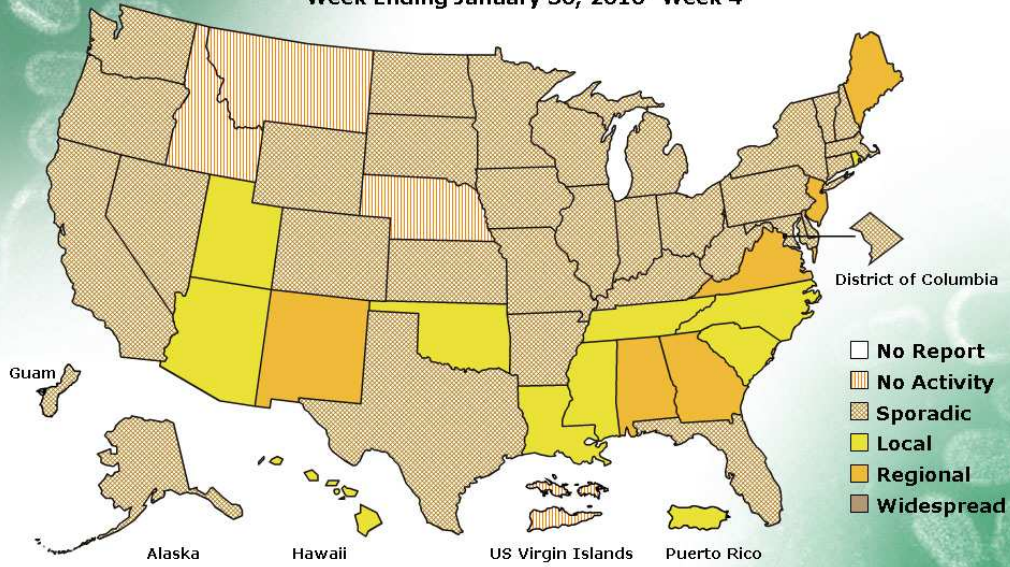
Mississippi reported **“local”** (Outbreaks of influenza or increases in ILI cases and recent laboratory-confirmed influenza in a single region of the state) activity for week **04**. For more information on flu activity nationwide, please refer to the CDC’s website at: <http://www.cdc.gov/flu/weekly/fluactivity.htm>.

FLUVIEW



A Weekly Influenza Surveillance Report Prepared by the Influenza Division
Weekly Influenza Activity Estimates Reported by State and Territorial Epidemiologists*

Week Ending January 30, 2010- Week 4



*This map indicates geographic spread and does not measure the severity of influenza activity.