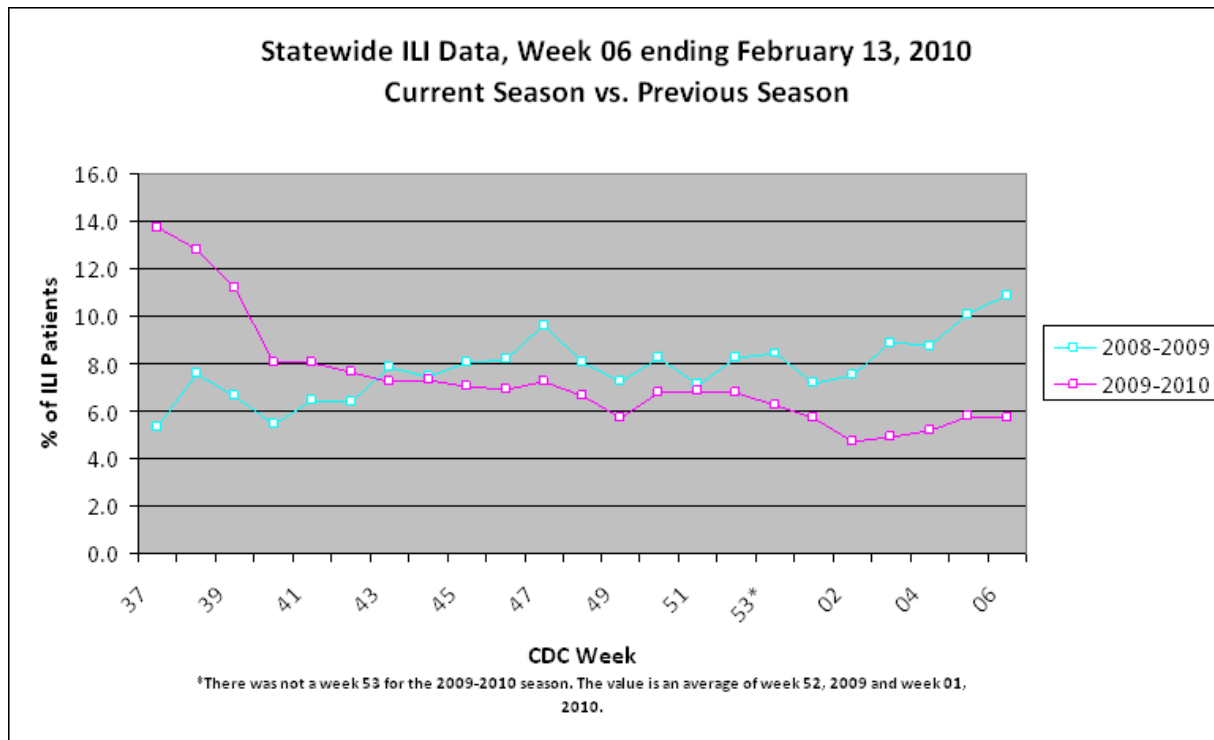
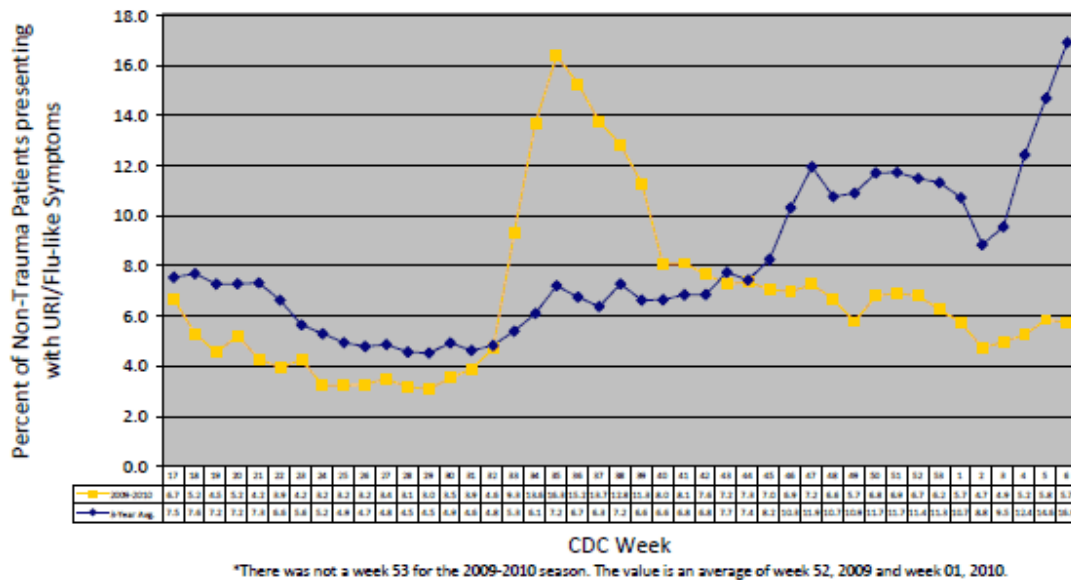


For week 06 (02/07/10- 02/13/10), the overall state ILI rate (5.7%) was comparable to last week (5.8%), but was lower than this time last year (10.9%).



The 2009-10 state ILI rate was below baseline for week 06 and has been below baseline for the past three months.

Comparison of 3-Year Average and 2009-2010 ILI Rates Statewide

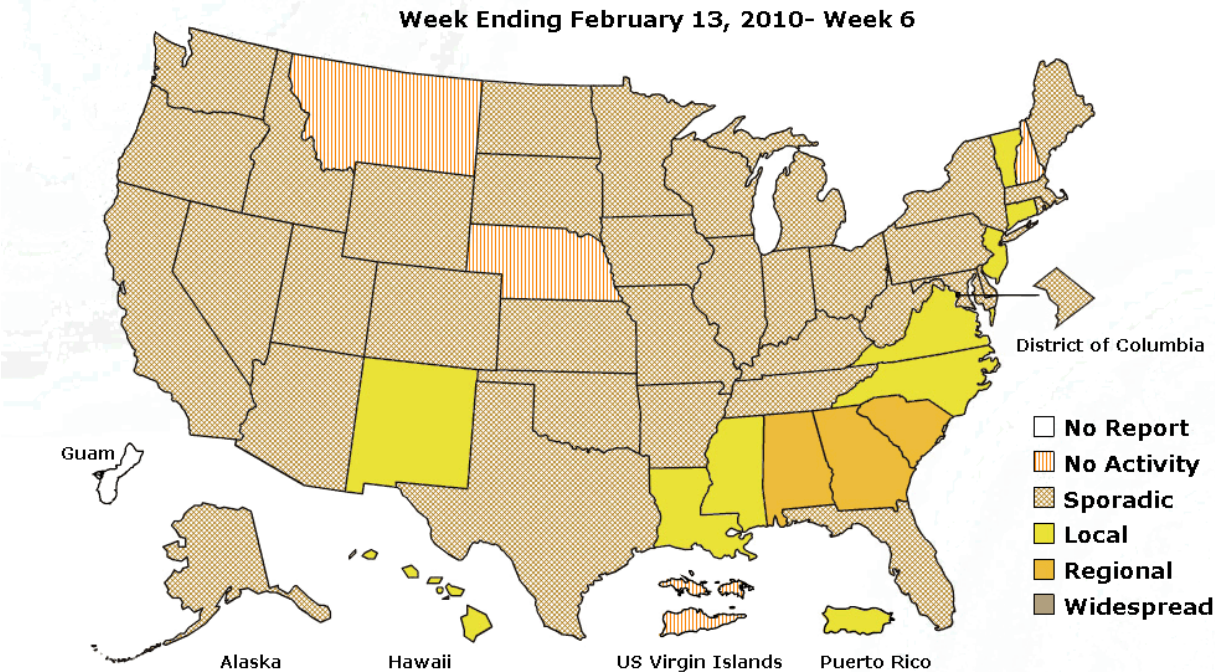


During week 06, two districts (2 and 4) had a decrease in ILI activity, four districts (1, 3, 7, and 9) had an increase, and three remained about the same (5, 6, and 8).

Since August 29th, there have been a total of 24 reported flu deaths, 12 that were confirmed H1N1. The most recent flu death occurred in Lawrence County in mid-February.

Below is a comparison of the state ILI rate to the number of positive influenza isolates since August 29th. The predominant flu type identified continues to be novel H1N1 (swine) flu.

Mississippi reported **“local”** (Outbreaks of influenza or increases in ILI cases and recent laboratory-confirmed influenza in a single region of the state) activity for week 06. For more information on flu activity nationwide, please refer to the CDC’s website at: <http://www.cdc.gov/flu/weekly/fluactivity.htm>.



*This map indicates geographic spread and does not measure the severity of influenza activity.