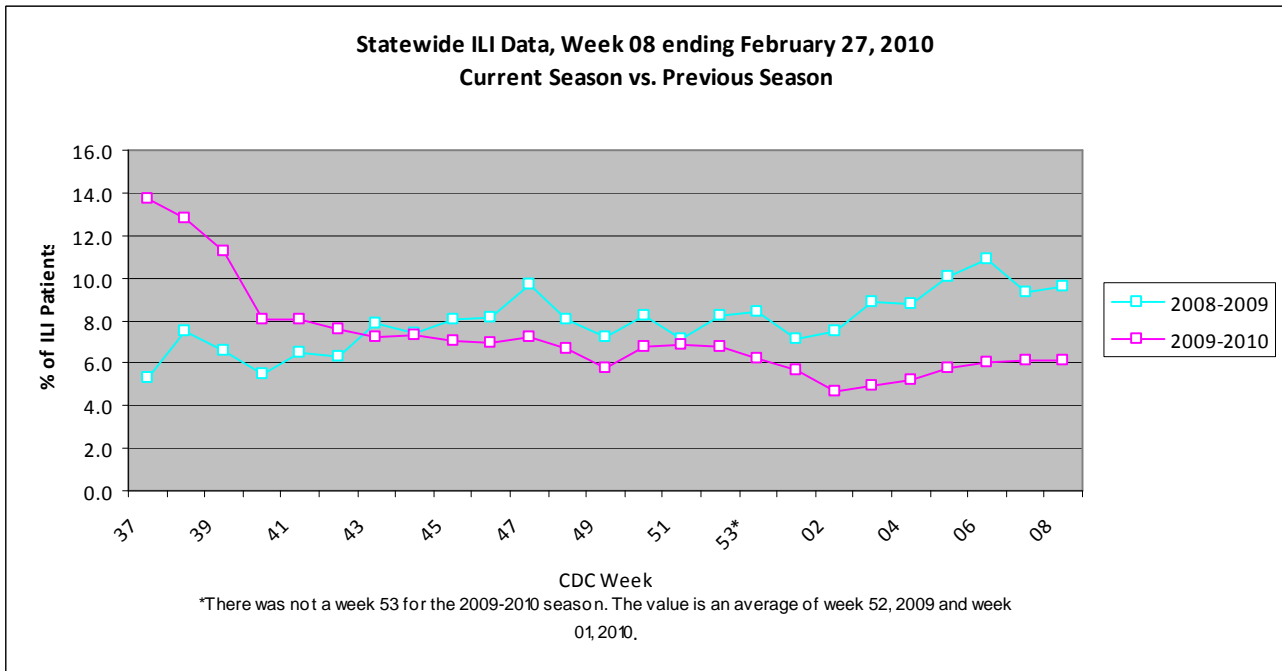
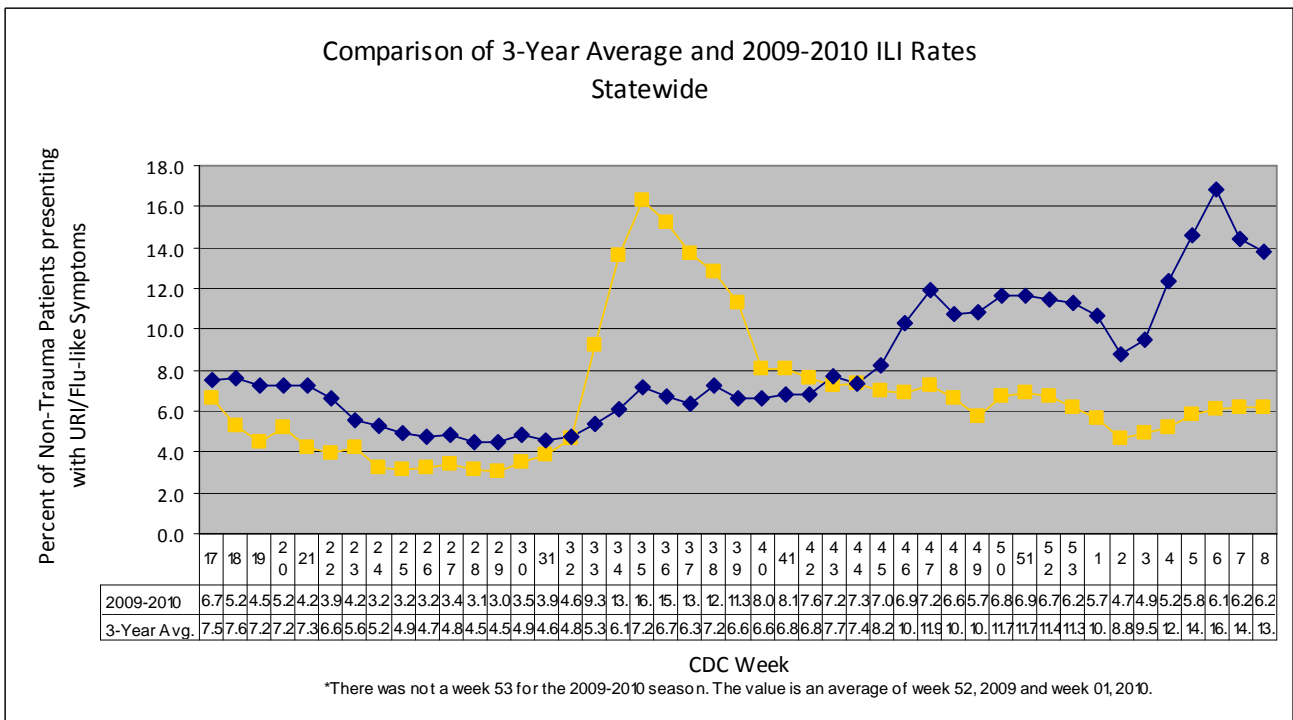


For week 08 (02/21/10- 02/27/10), the overall state ILI rate (6.2%) was comparable to last week (6.2%), but was lower than this time last year (9.6%).



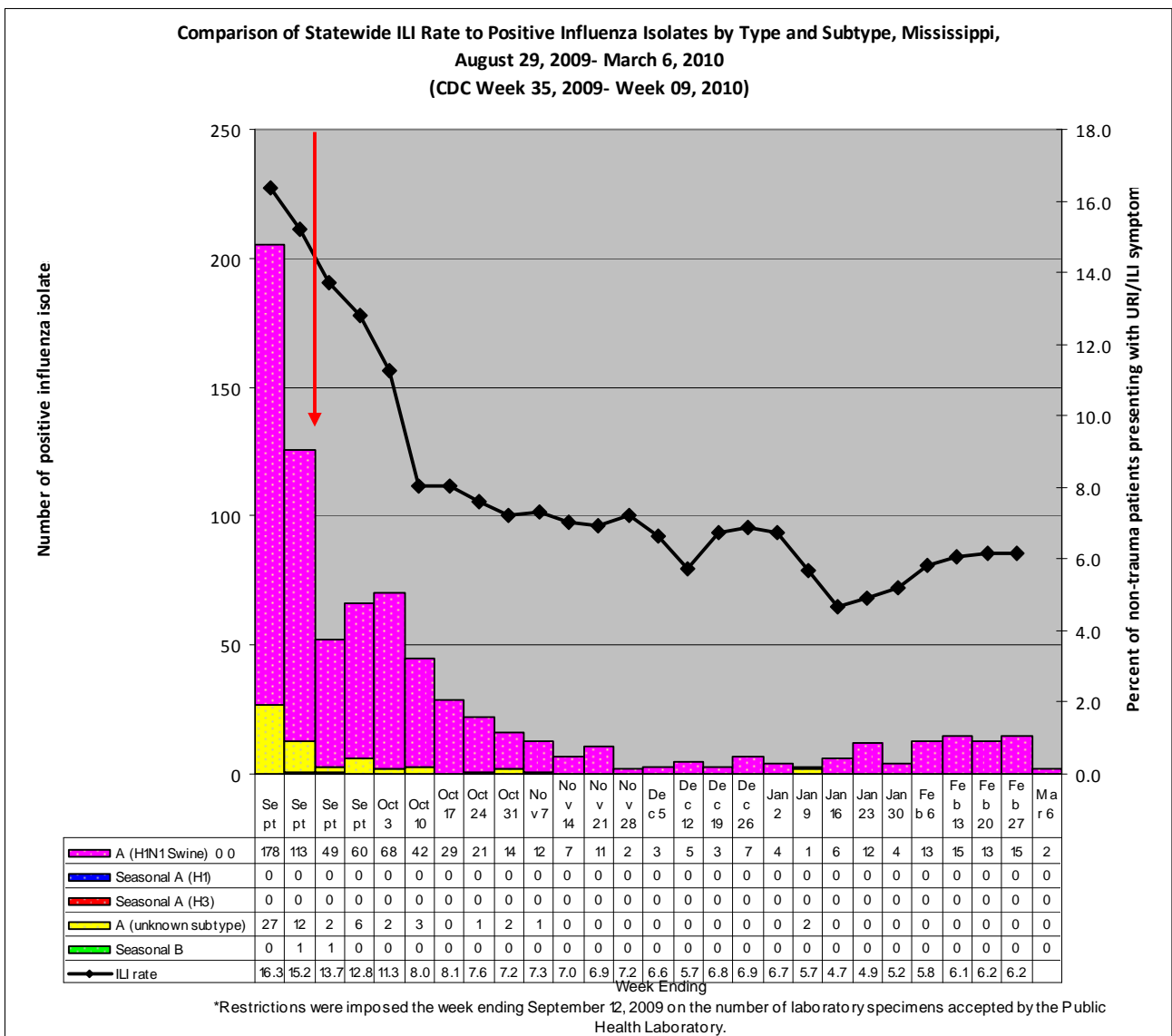
The 2009-10 state ILI rate was below baseline for week 08 and has been below baseline for the past four months.



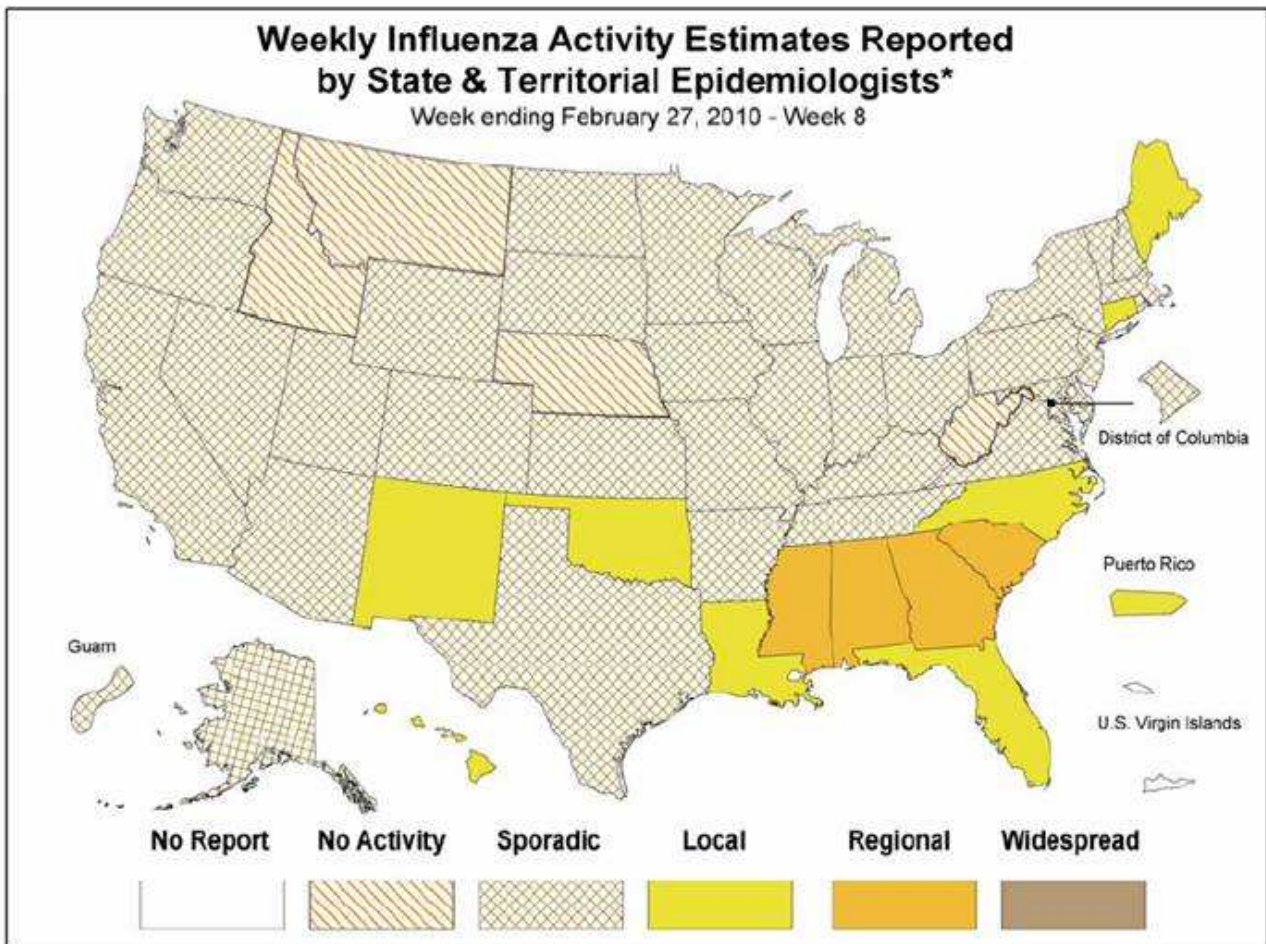
During week 08, two districts (3 and 8) had a decrease in ILI activity, three districts (2, 5, and 7) had an increase, and four remained about the same (1, 4, 6, and 9). District 1 had been experiencing increased ILI activity for the last three weeks, while District 6 ILI rate had been on an increase for the past two weeks, but both leveled off from weeks 07 to 08. District 8 had also been experiencing increased ILI activity for the last three weeks, but decreased dramatically from weeks 07 to 08. However, all of these districts are still below their baseline.

Since August 29th, there have been a total of 25 reported flu deaths, 13 that were confirmed H1N1. The most recent flu death occurred in Grenada County in mid-February.

Below is a comparison of the state ILI rate to the number of positive influenza isolates since August 29th. The predominant flu type identified continues to be novel H1N1 (swine) flu.



Mississippi reported “**regional**” (Outbreaks of influenza or increases in ILI and recent laboratory confirmed influenza in at least two but less than half the regions of the state with recent laboratory evidence of influenza in those regions) activity for week **08**. For more information on flu activity nationwide, please refer to the CDC’s website at: <http://www.cdc.gov/flu/weekly/fluactivity.htm>.



* This map indicates geographic spread & does not measure the severity of influenza activity