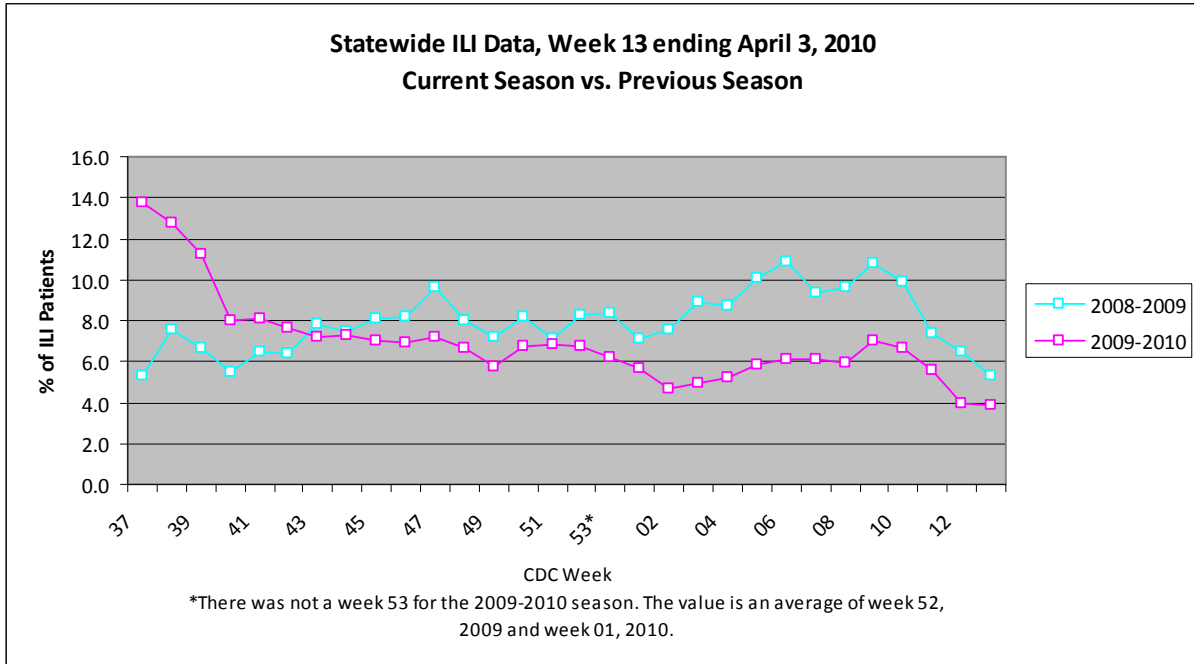
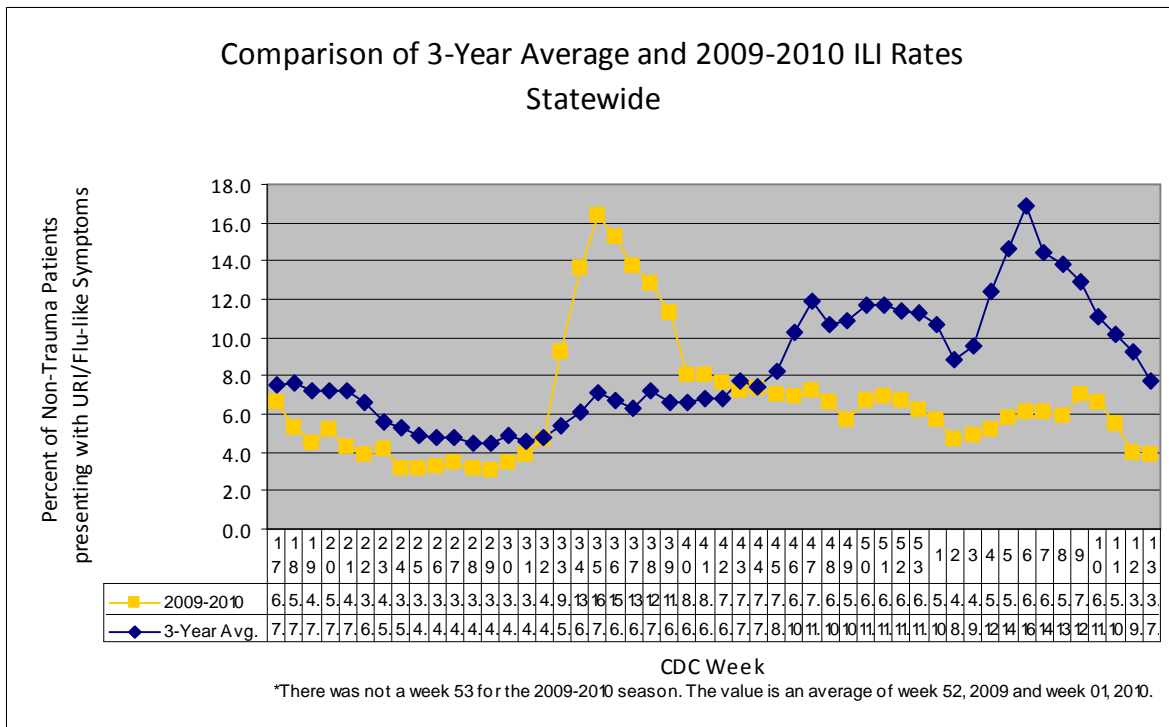


For week 13 (03/28/10- 04/03/10), the overall state ILI rate (3.8%) was comparable to week 12 (3.9%), but was lower than this time last year (5.3%).



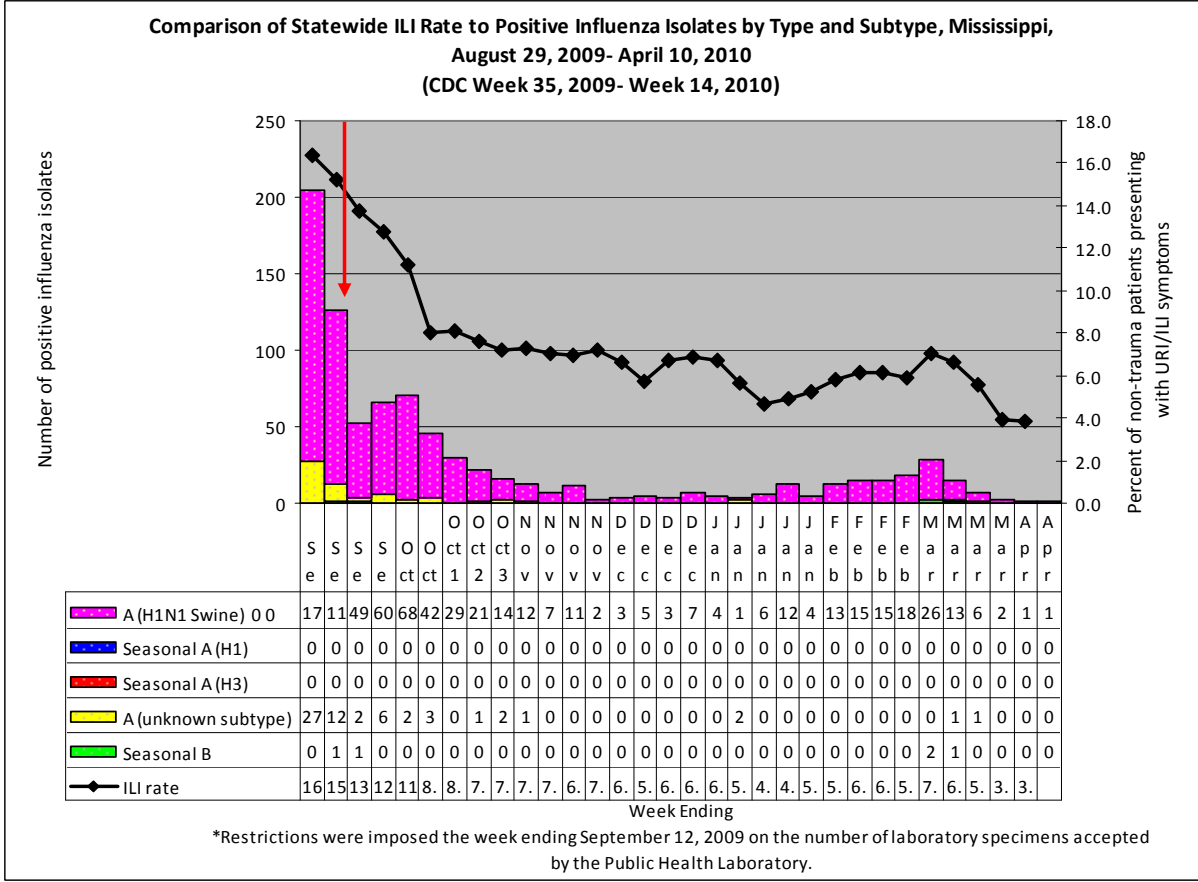
The 2009-10 state ILI rate was below baseline for week 13 and has been below baseline for the past five months.



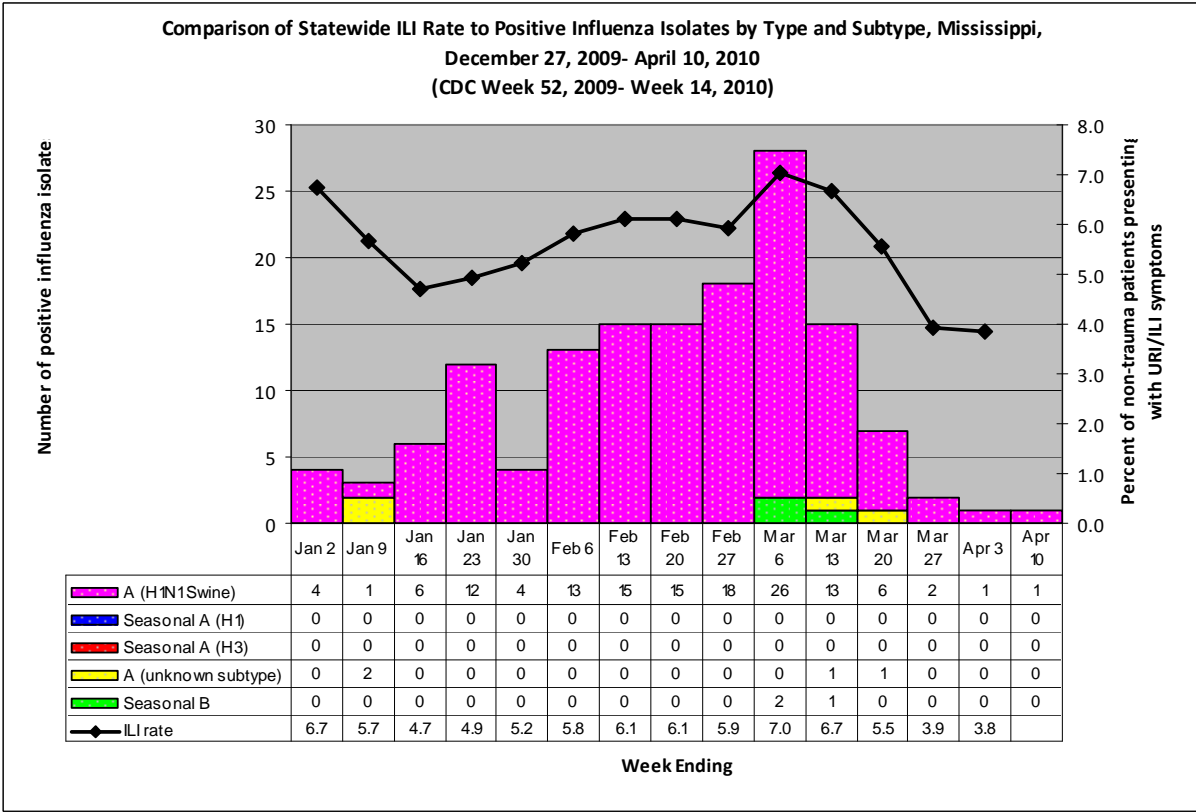
During week 13, three districts (3, 8, and 9) had a decrease in ILI activity, four districts (2, 4, 6, and 7) had a slight to moderate increase, and two remained about the same (1 and 5).

Since August 29th, there have been a total of 27 reported flu deaths, 14 that were confirmed H1N1. The most recent reported flu death occurred in Lincoln County in mid-March.

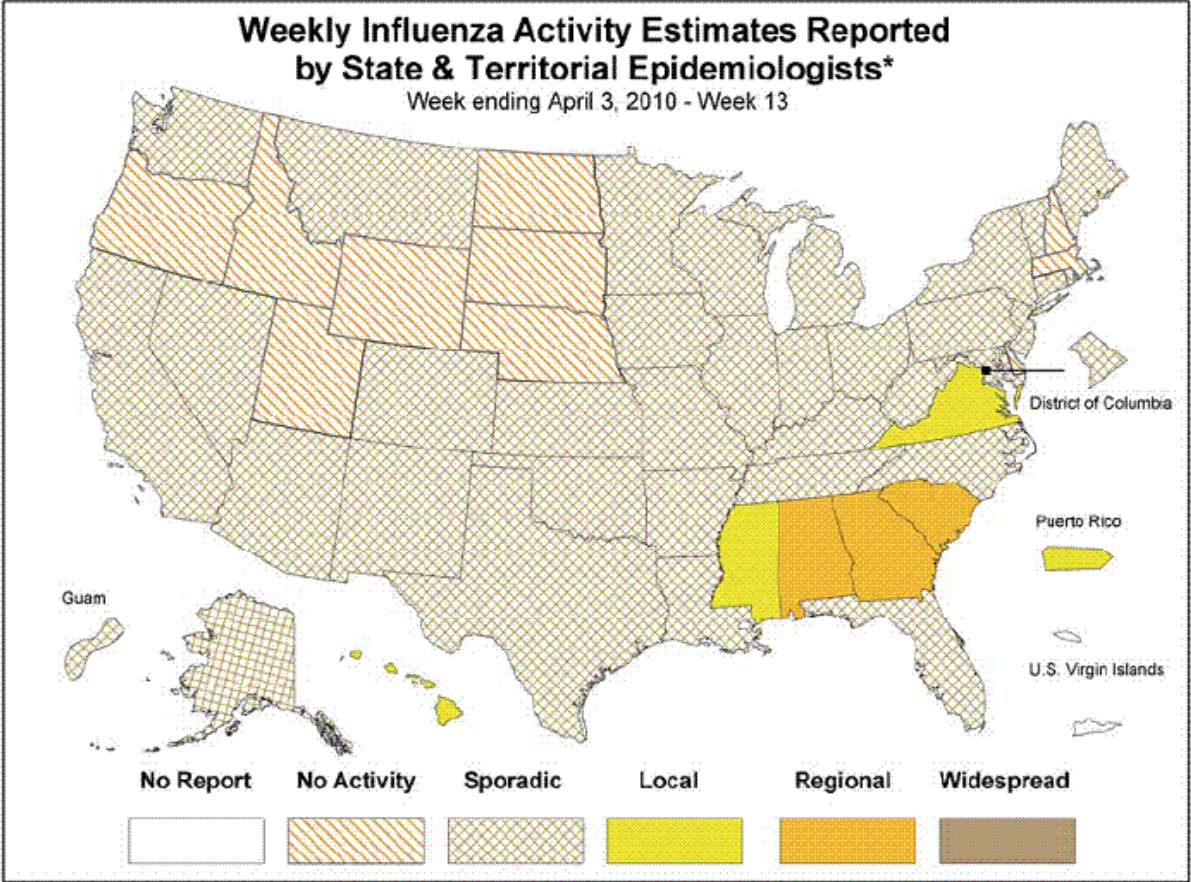
Below is a comparison of the state ILI rate to the number of positive influenza isolates since August 29th. The predominant flu type identified continues to be novel H1N1 (swine) flu.



The inset graph below shows the latest Flu B's that were identified by the MSDH PHL. All three Flu B's were from District 5 (Hinds County) and had an onset of symptoms in the first two weeks of March. The last Flu B that was identified by the MSDH PHL prior to these three was in September 2009.



Mississippi reported **“local”** (Outbreaks of influenza or increases in ILI cases and recent laboratory-confirmed influenza in a single region of the state) activity for week 13. For more information on flu activity nationwide, please refer to the CDC’s website at: <http://www.cdc.gov/flu/weekly/fluactivity.htm>.



* This map indicates geographic spread & does not measure the severity of influenza activity