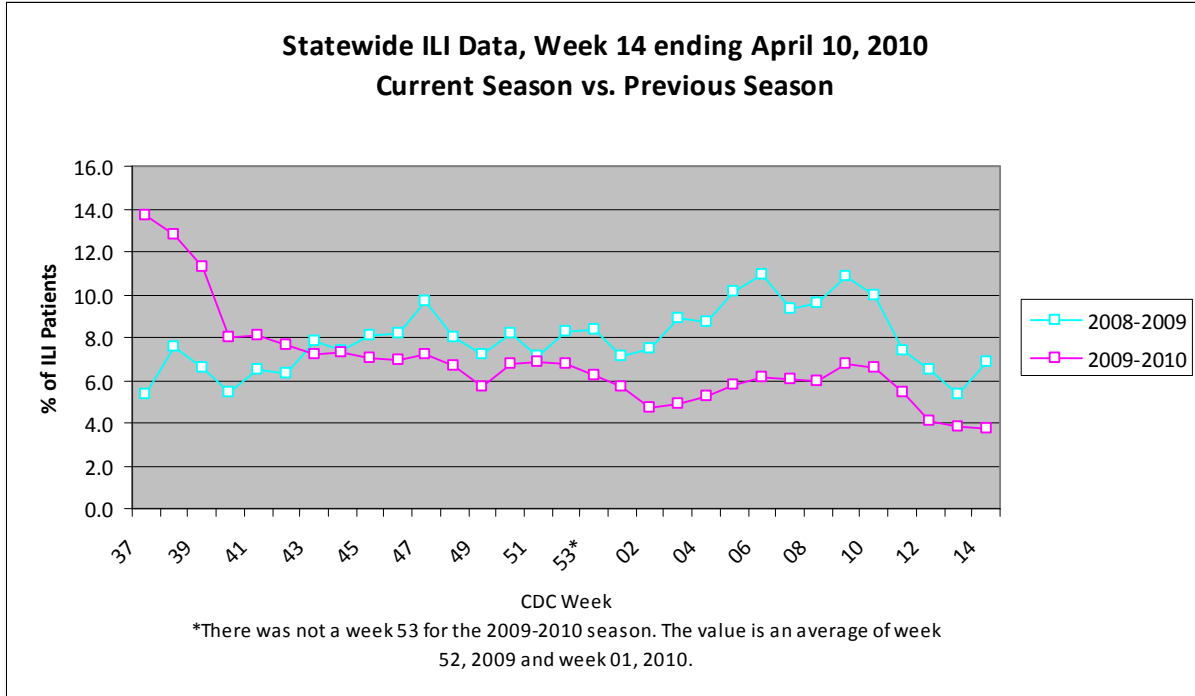
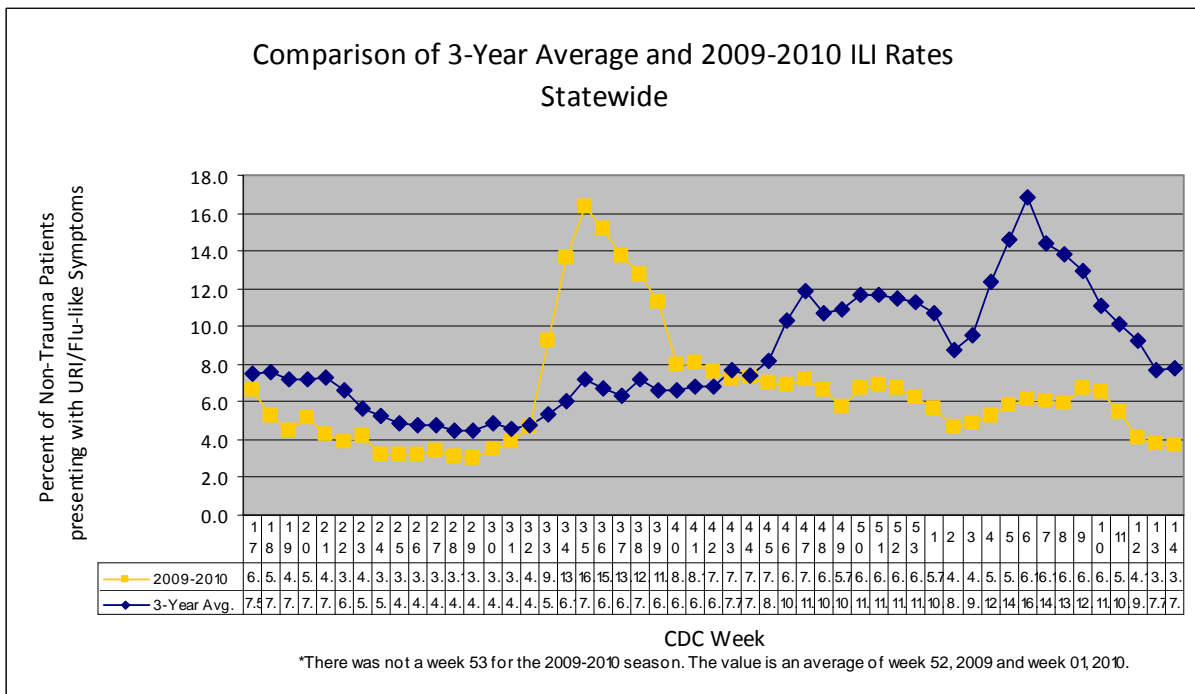


For week 14 (04/04/10- 04/10/10), the overall state ILI rate (3.7%) was comparable to last week (3.8%), but was lower than this time last year (6.8%).



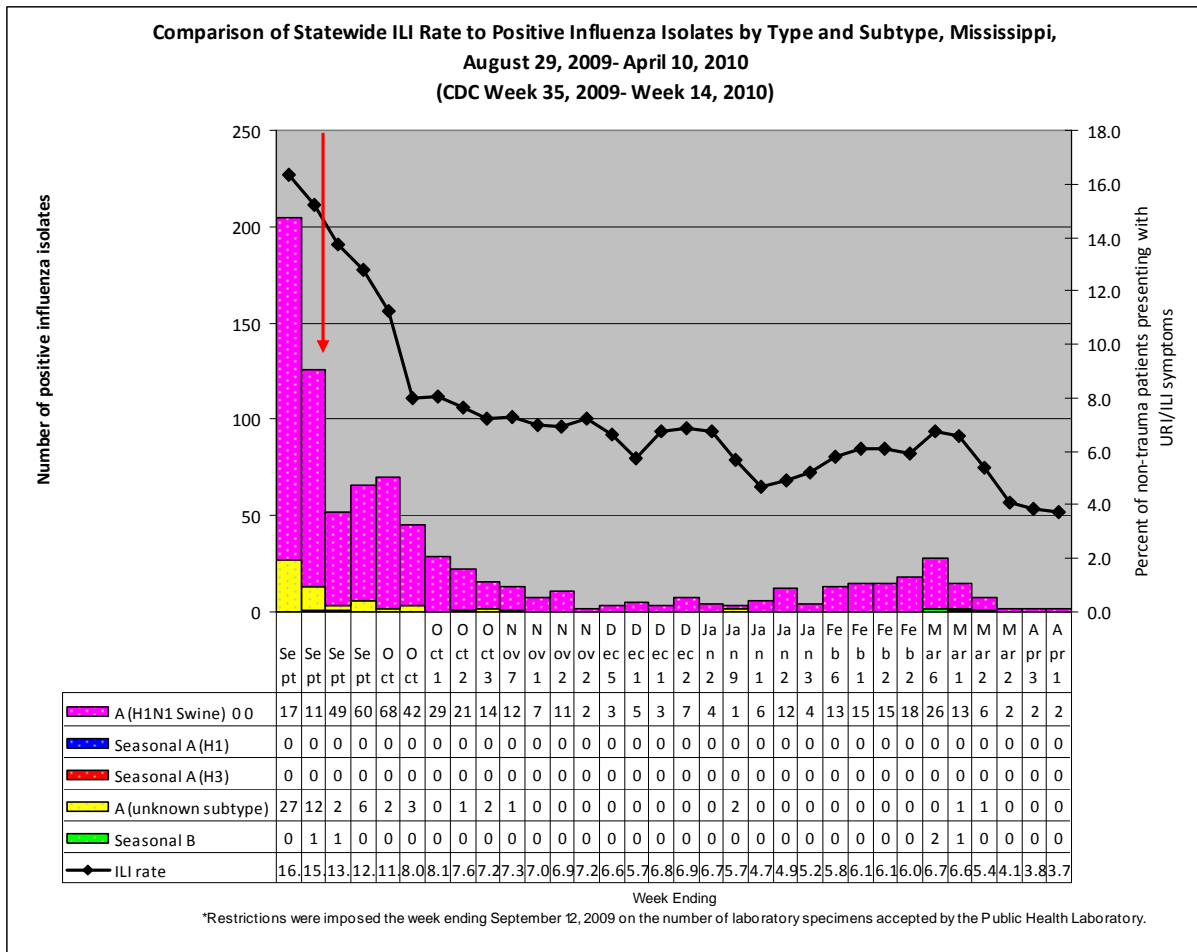
The 2009-10 state ILI rate was below baseline for week 14 and has been below baseline for the past five months.



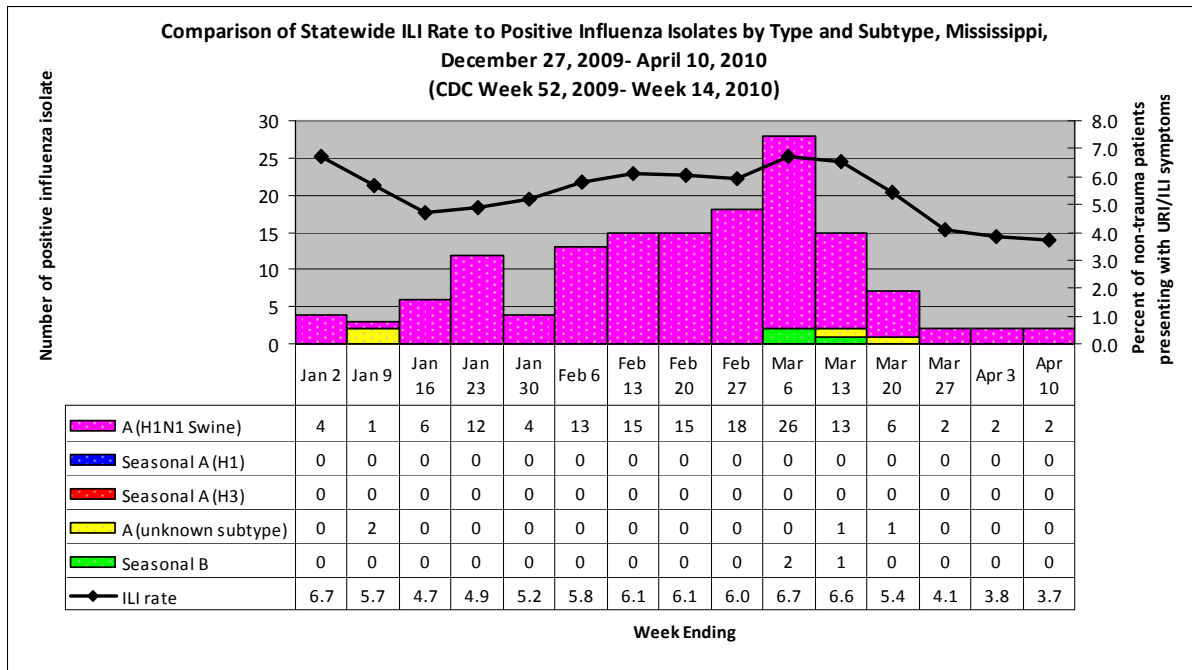
During week 14, three districts (2, 3, and 7) had a decrease in ILI activity, two districts (6 and 8) had a slight to moderate increase, and four remained about the same (1, 4, 5, and 9).

Since August 29<sup>th</sup>, there have been a total of 27 reported flu deaths, 14 that were confirmed H1N1. The most recent reported flu death occurred in Lincoln County in mid-March.

Below is a comparison of the state ILI rate to the number of positive influenza isolates since August 29<sup>th</sup>. The predominant flu type identified continues to be novel H1N1 (swine) flu.



The inset graph below shows the latest Flu B's that were identified by the MSDH PHL. All three Flu B's were from District 5 (Hinds County) and had an onset of symptoms in the first two weeks of March. The last Flu B that was identified by the MSDH PHL prior to these three was in September 2009.



Mississippi reported “**sporadic**” (Small numbers of laboratory-confirmed influenza cases or a single laboratory-confirmed influenza outbreak has been reported, but there is no increase in cases of ILI) activity for week 14. For more information on flu activity nationwide, please refer to the CDC’s website at: <http://www.cdc.gov/flu/weekly/fluactivity.htm>.

