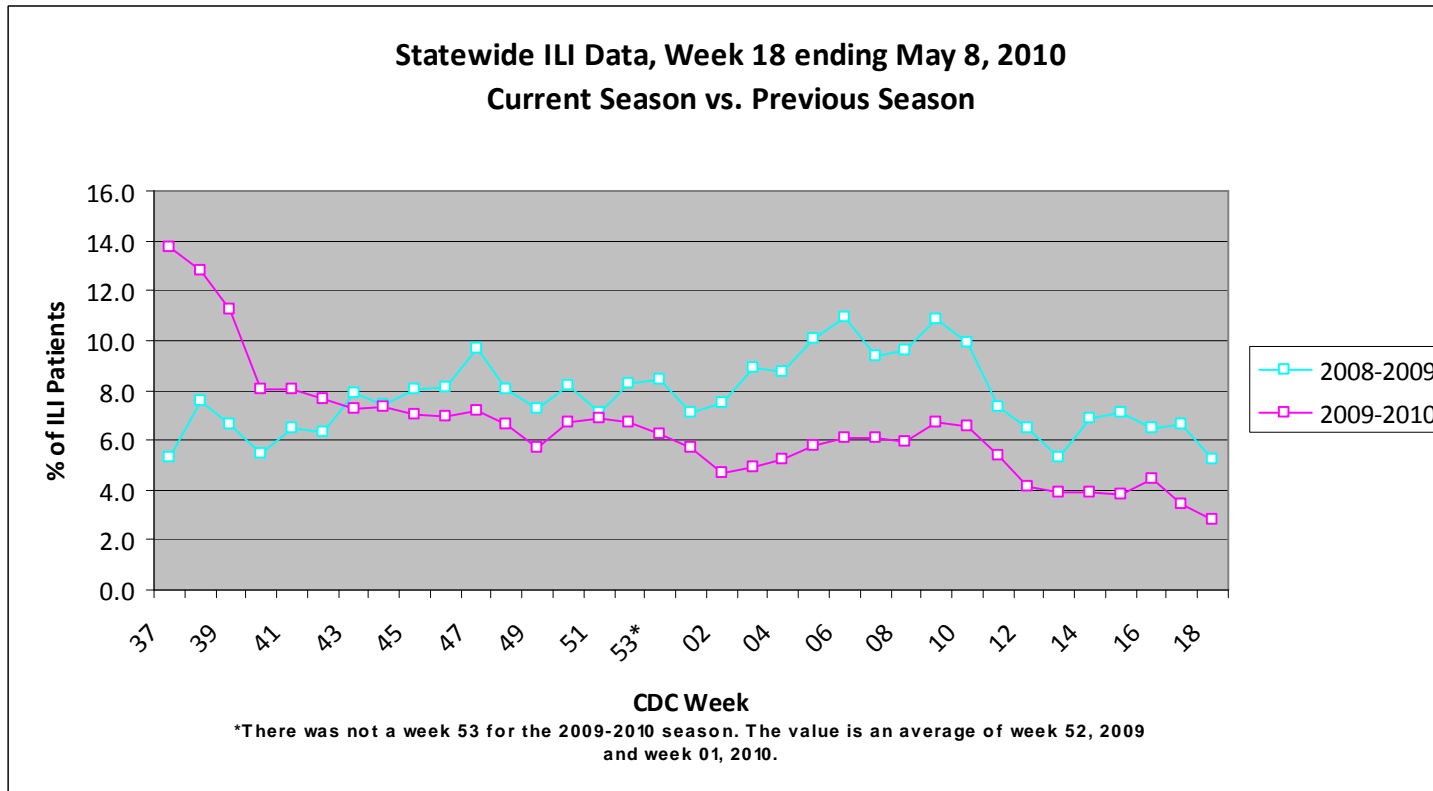


Influenza-Like Illness Report

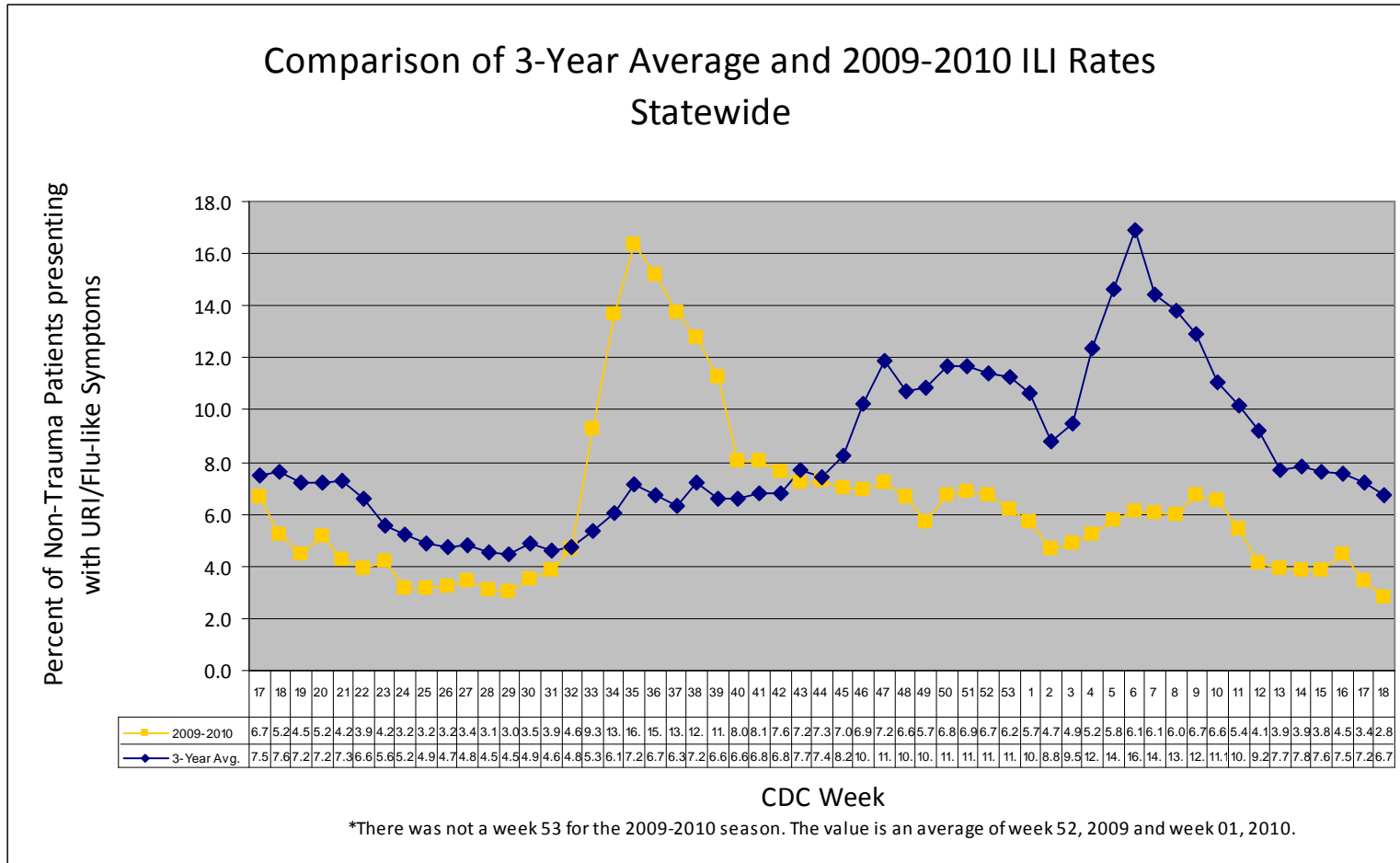
Mississippi State Department of Health

Week 18, 2010

For week 18 (05/02/10- 05/08/10), the overall state ILI rate (2.8%) decreased from last week (3.4%) and was lower than this time last year (5.2%).



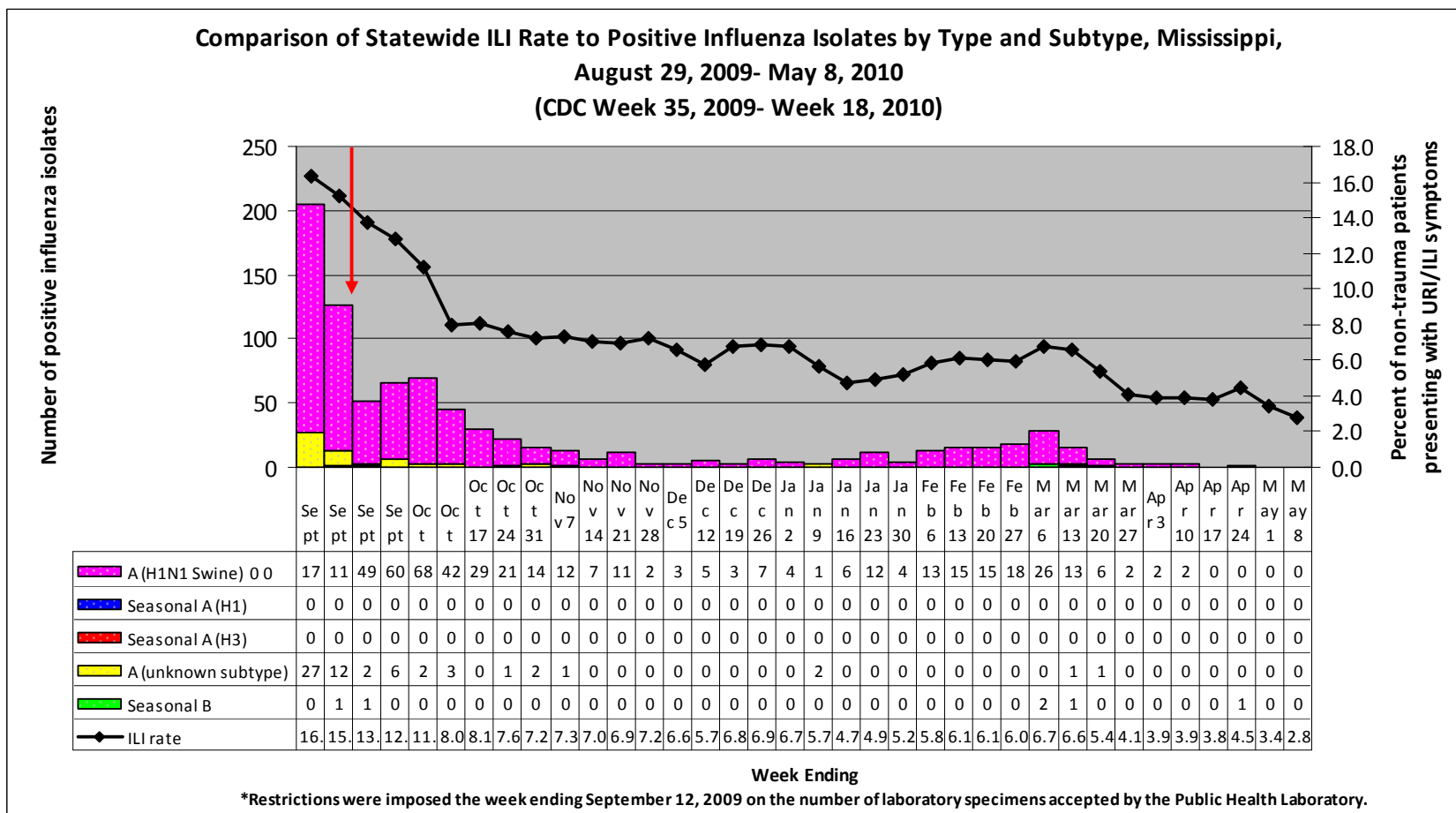
The 2009-10 state ILI rate was below baseline for week 18 and has been below baseline for the past six months.



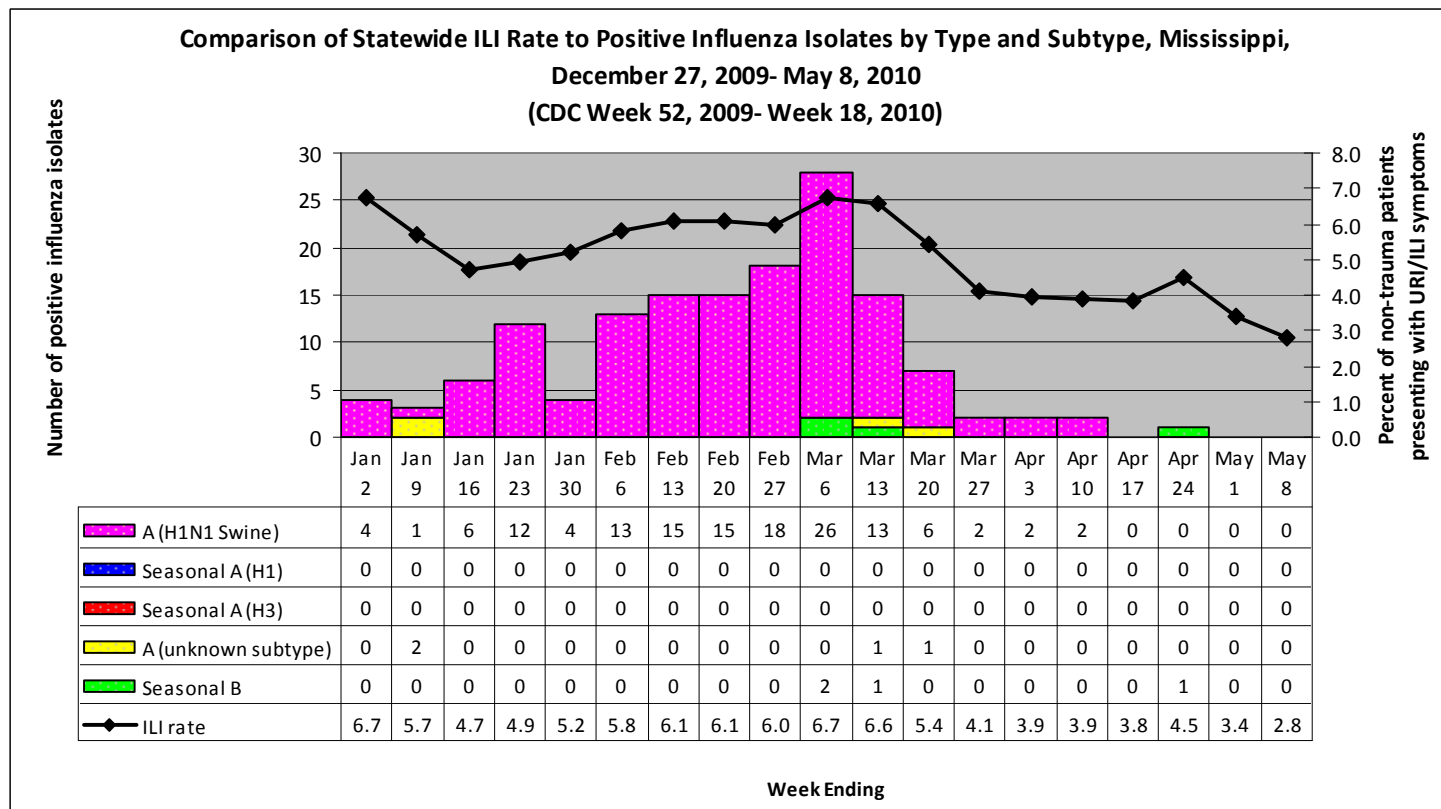
During week 18, six districts (1, 5, 6, 7, 8, and 9) had a decrease in ILI activity, one district (4) had an increase, and one remained about the same (2).

Since August 29th, there have been a total of 27 reported flu deaths, 14 that were confirmed H1N1. The most recent reported flu death occurred in Lincoln County in mid-March.

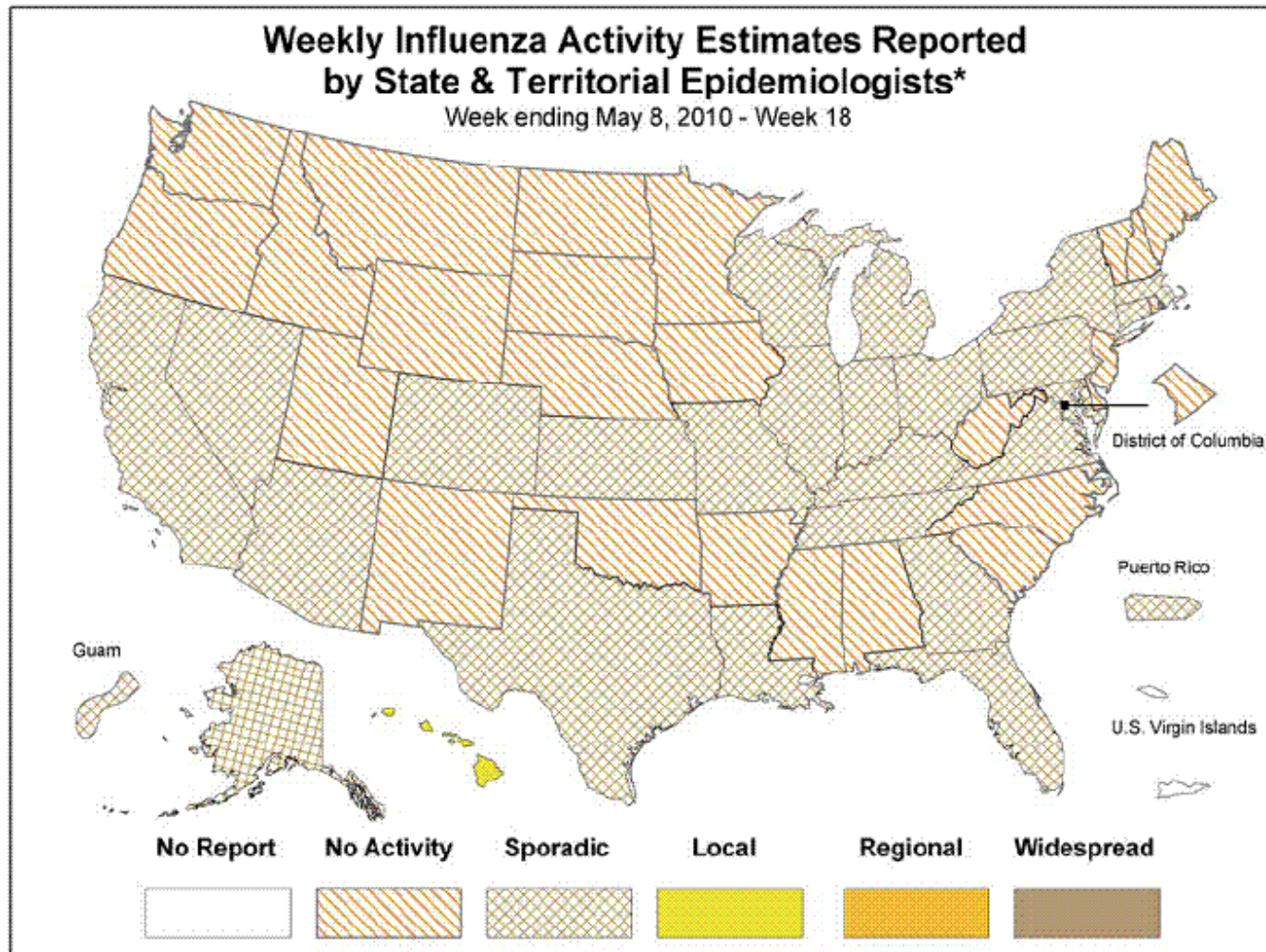
Below is a comparison of the state ILI rate to the number of positive influenza isolates since August 29th. The last positive flu specimen that was reported out by the MSDH PHL was in late-April.



The inset graph below shows the last positive Flu specimen that was identified by the MSDH PHL. The Flu B was from District 3 (Attala County) and had an onset of symptoms in mid-April.



Mississippi reported “no activity” (No laboratory-confirmed cases of influenza and no reported increase in the number of cases of ILI) activity for week 18. For more information on flu activity nationwide, please refer to the CDC’s website at: <http://www.cdc.gov/flu/weekly/fluactivity.htm>.



* This map indicates geographic spread & does not measure the severity of influenza activity