



2010-2011 Influenza Report Week 46

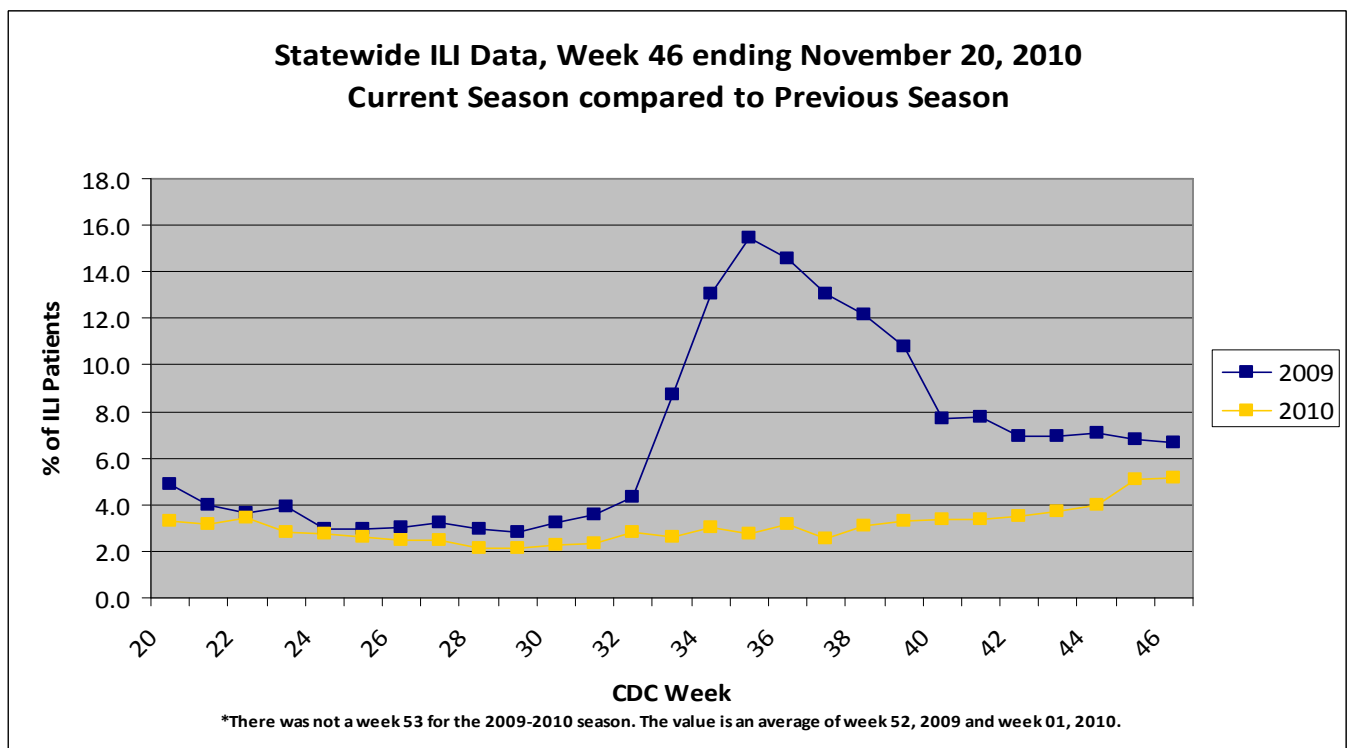
November 14, 2010 - November 20, 2010

About our flu activity reporting

MSDH relies upon selected health practitioners across the state to report possible flu cases (cases of influenza-like illness) for confirmation by laboratory testing. Our reports below show **only** cases confirmed as influenza by the MSDH Public Health Laboratory, and represent the distribution of flu in the state, not an actual count of all flu cases statewide.

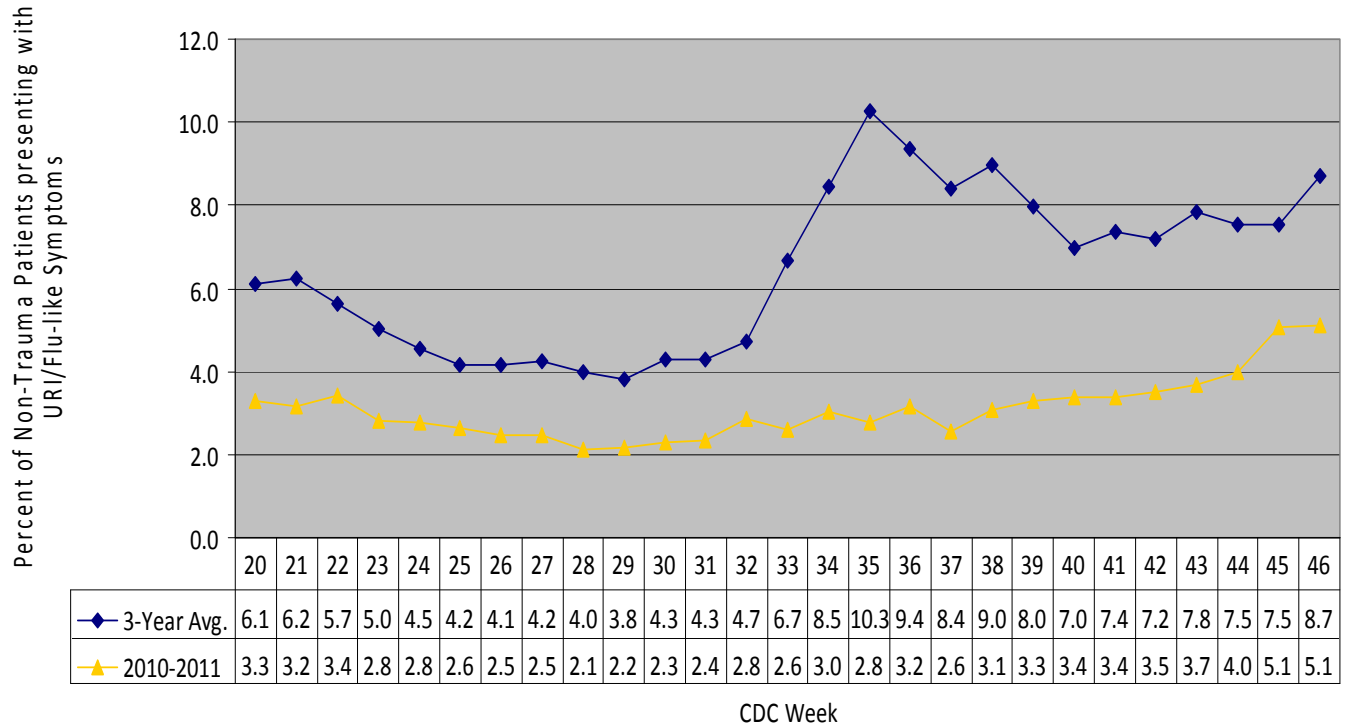
State URI/ILI Surveillance

For week 46 (11/14/2010-11/20/2010), the overall state ILI rate (5.1%) was comparable to last week (5.1%), but was lower than this time last year (6.1%).

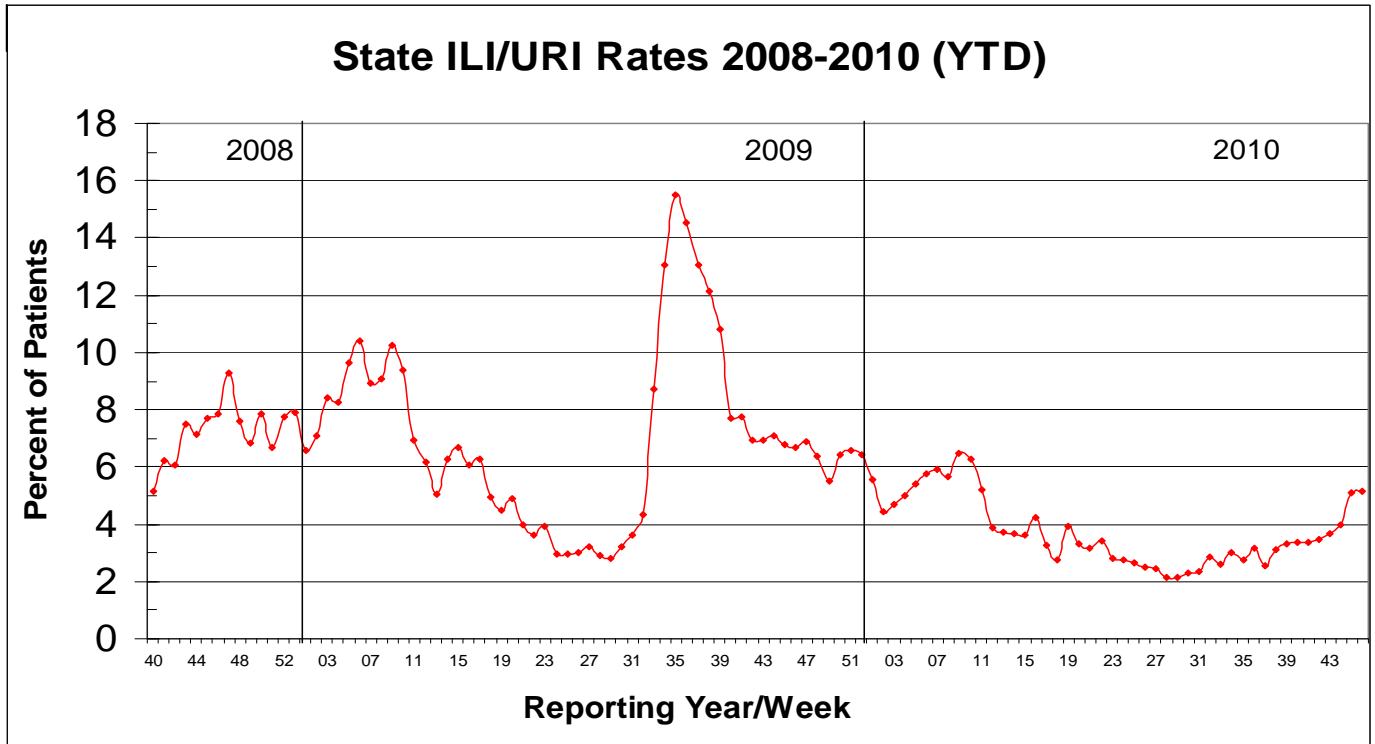


During week 46, three districts (1, 3, and 6) had an increase in ILI activity; three districts (2, 7, and 9) had a decrease, while the remaining districts (4, 5, and 8) remained about the same. The 2010-11 state ILI rate was below baseline for week 46 and has been below baseline for the past six months.

Comparison of 3-Year Average and 2010-2011 ILI Rates
Statewide



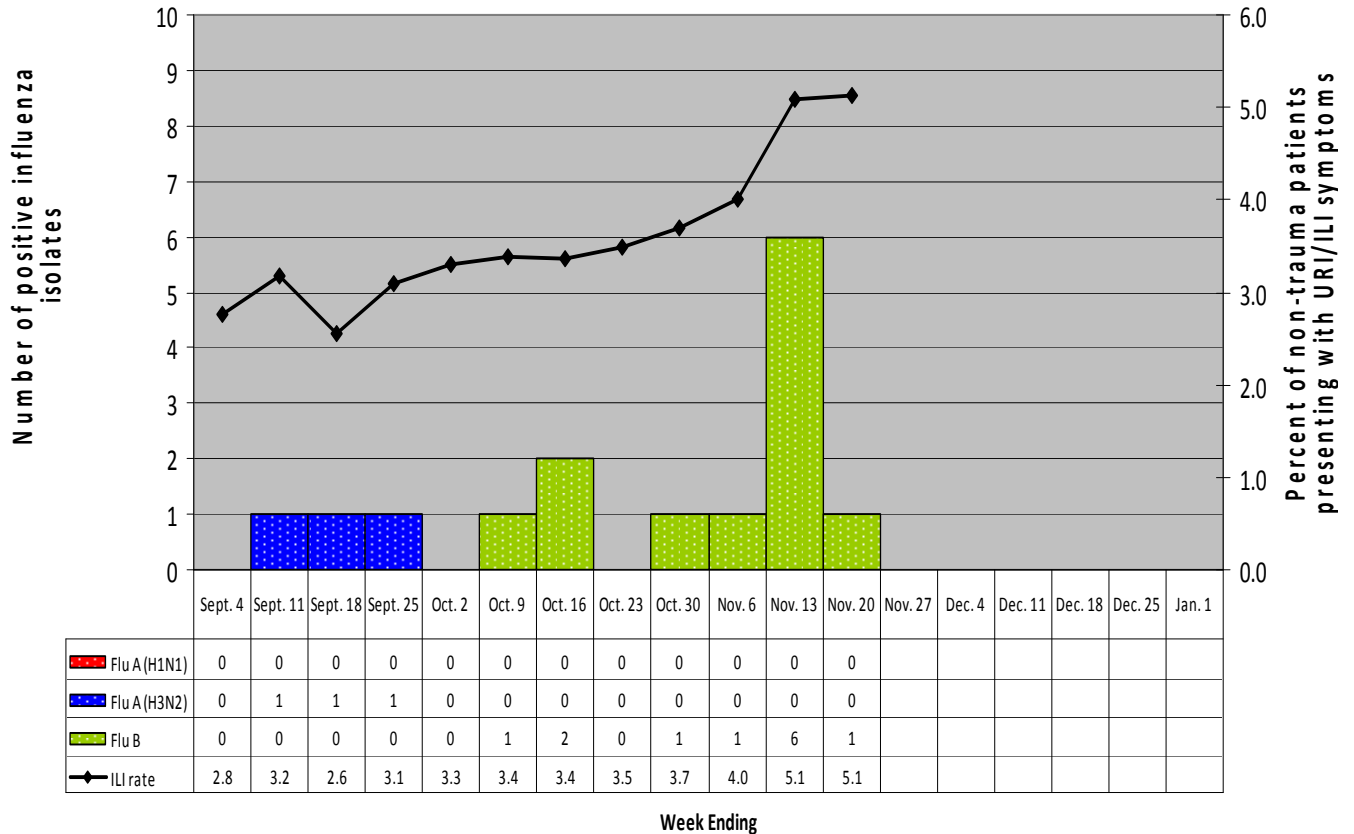
*There was not a week 53 for the 2009-2010 season. The value is an average of week 52, 2009 and week 01, 2010.



Flu testing Reports*

Since September, there have been **fifteen** respiratory samples that were positive by influenza PCR testing. Three were positive for influenza A (H3), one of which had a documented travel history to Florida prior to the onset of symptoms, and represented an imported case. The other twelve confirmed influenza cases were Flu B. The cases were identified from the following counties: Attala, Holmes, Jasper, Lamar, Oktibbeha, and Perry.

**Comparison of Statewide ILI Rate to Positive Influenza Isolates by Type and Subtype, Mississippi,
August 28, 2010- November 20, 2010
(CDC Week 35, 2010- Week 46, 2010)**



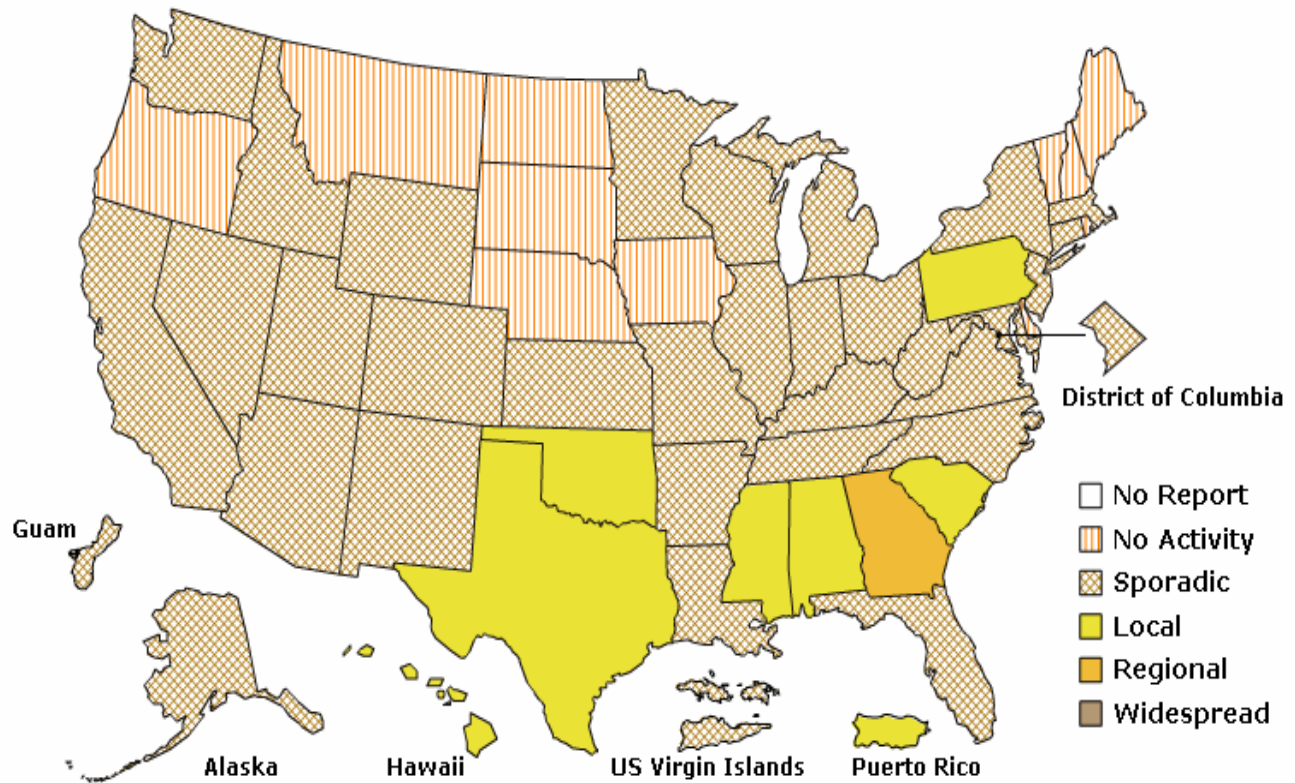
* See MS Confirmed Flu Cases 2010-2011 for county, flu type specifics.

National ILI Surveillance

Mississippi reported **“local”** (increased ILI within a single region AND recent [within the past 3 weeks] laboratory evidence of influenza in the region) activity for week **46**.

A Weekly Influenza Surveillance Report Prepared by the Influenza Division
Weekly Influenza Activity Estimates Reported by State and Territorial Epidemiologists*

Week Ending November 20, 2010- Week 46

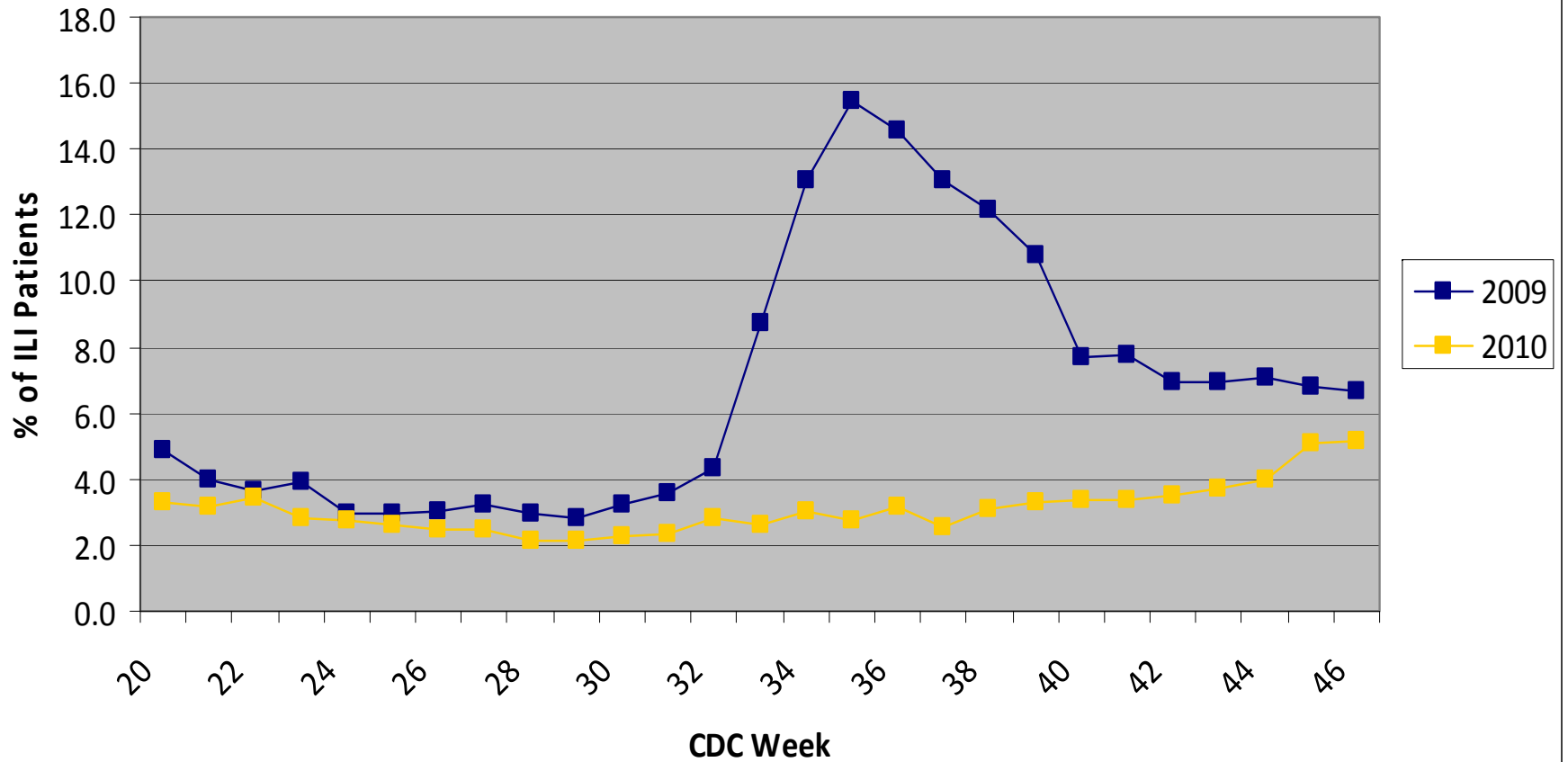


For more information on flu activity nationwide, please refer to the CDC's website:
<http://www.cdc.gov/flu/weekly/fluactivity.htm>

Page intentionally blank

Appendix

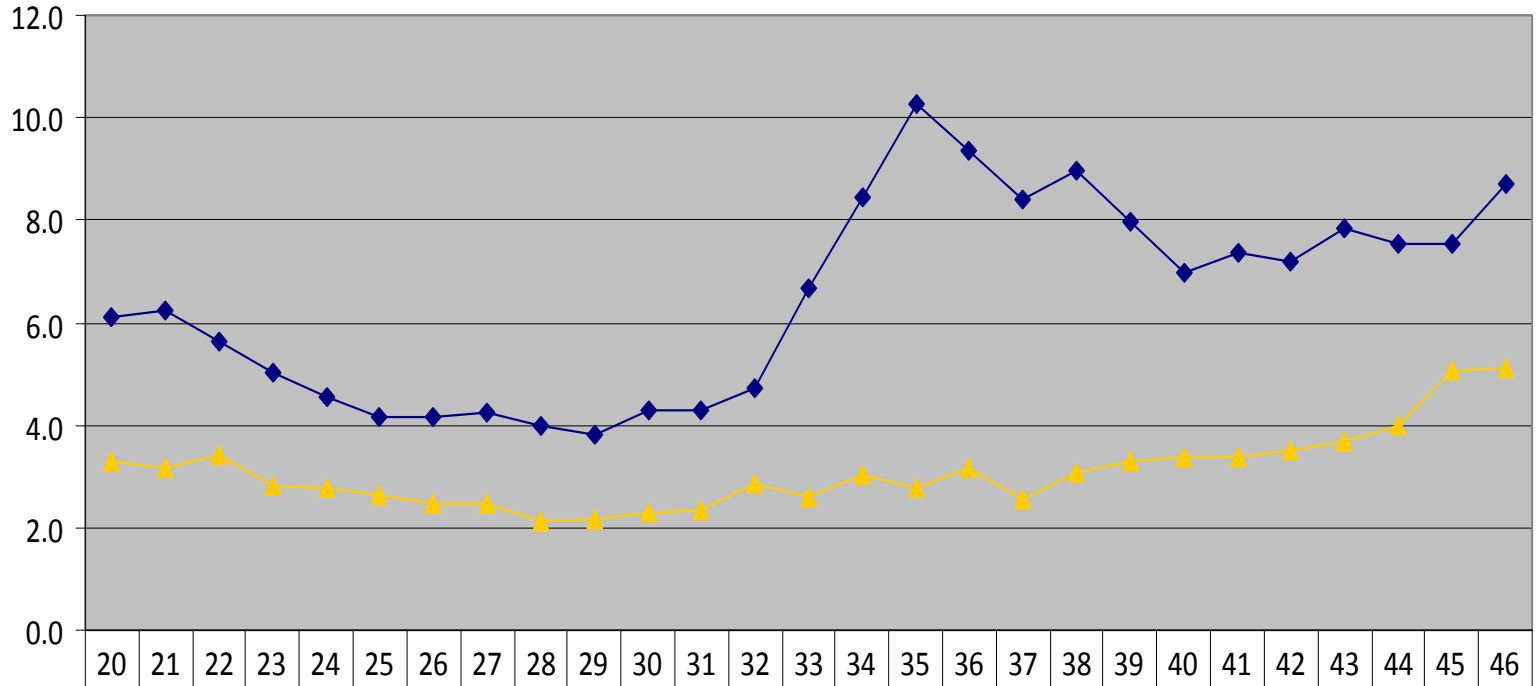
Statewide ILI Data, Week 46 ending November 20, 2010 Current Season compared to Previous Season



*There was not a week 53 for the 2009-2010 season. The value is an average of week 52, 2009 and week 01, 2010.

Comparison of 3-Year Average and 2010-2011 ILI Rates Statewide

Percent of Non-Trauma Patients presenting with
URI/Flu-like Symptoms

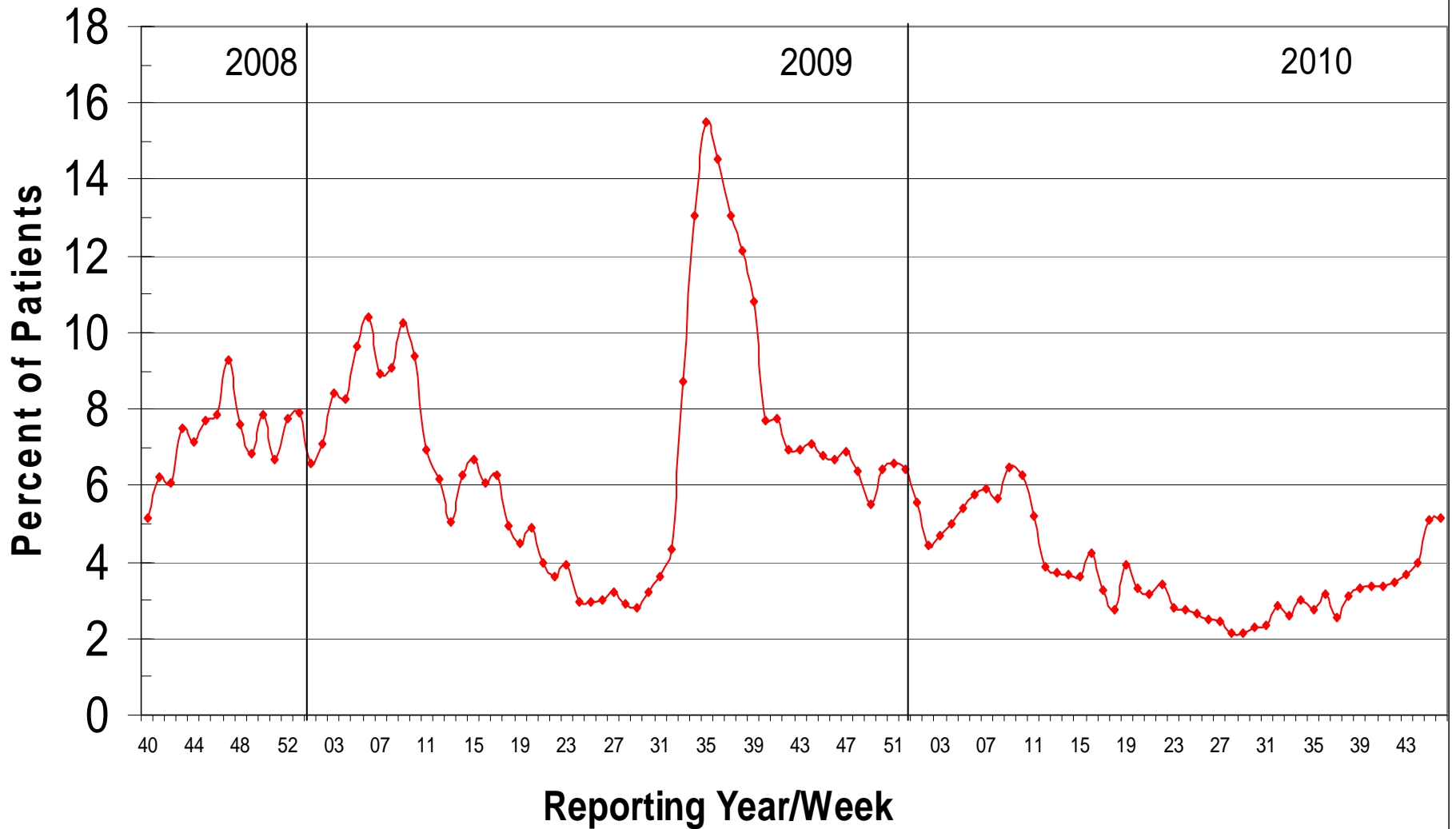


◆ 3-Year Avg.	6.1	6.2	5.7	5.0	4.5	4.2	4.1	4.2	4.0	3.8	4.3	4.3	4.7	6.7	8.5	10.3	9.4	8.4	9.0	8.0	7.0	7.4	7.2	7.8	7.5	7.5	8.7
▲ 2010-2011	3.3	3.2	3.4	2.8	2.8	2.6	2.5	2.5	2.1	2.2	2.3	2.4	2.8	2.6	3.0	2.8	3.2	2.6	3.1	3.3	3.4	3.4	3.5	3.7	4.0	5.1	5.1

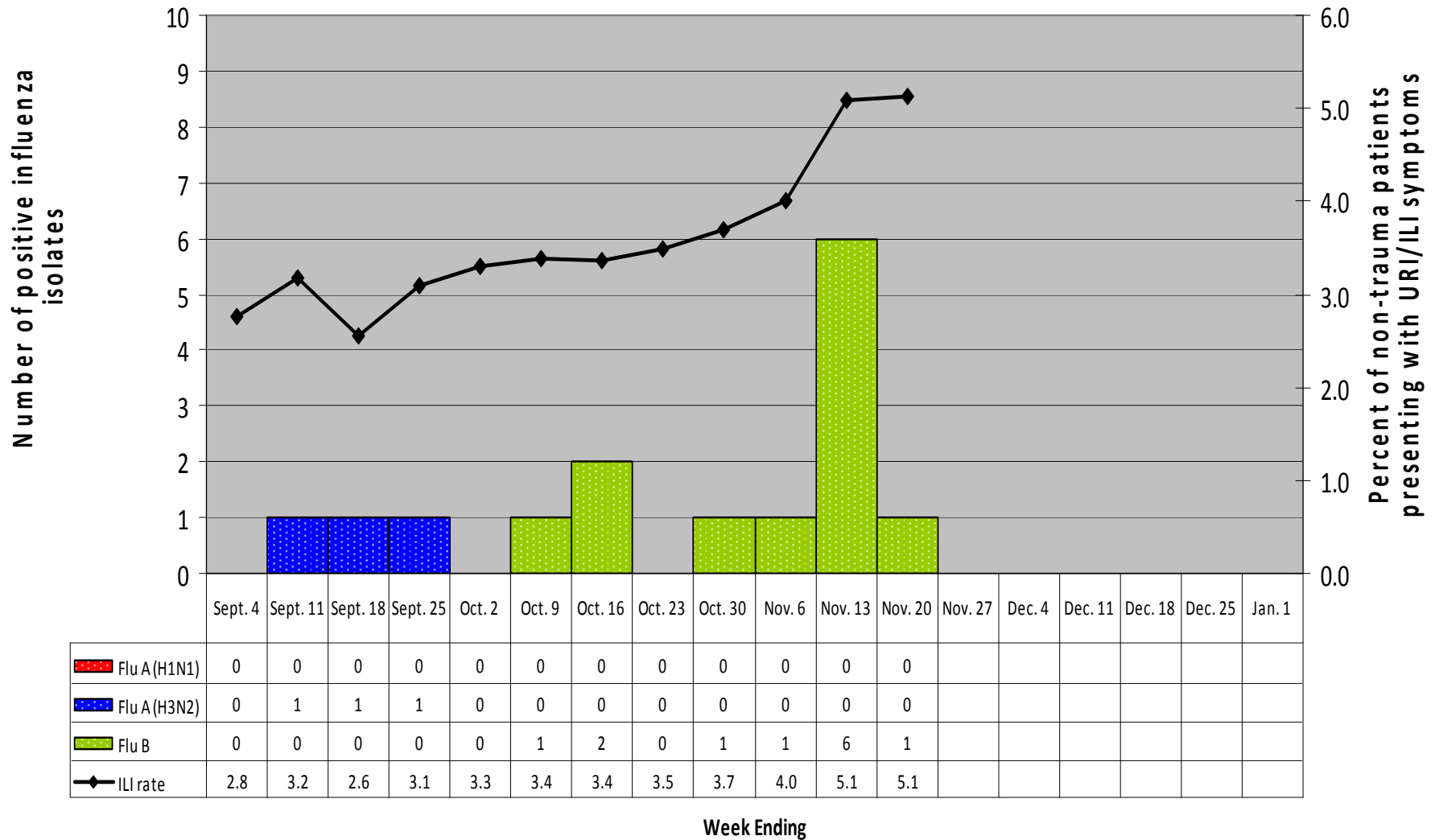
CDC Week

*There was not a week 53 for the 2009-2010 season. The value is an average of week 52, 2009 and week 01, 2010.

State ILI/URI Rates 2008-2010 (YTD)



**Comparison of Statewide ILI Rate to Positive Influenza Isolates by Type and Subtype, Mississippi,
August 28, 2010- November 20, 2010
(CDC Week 35, 2010- Week 46, 2010)**



A Weekly Influenza Surveillance Report Prepared by the Influenza Division
Weekly Influenza Activity Estimates Reported by State and Territorial Epidemiologists*

Week Ending November 20, 2010- Week 46

